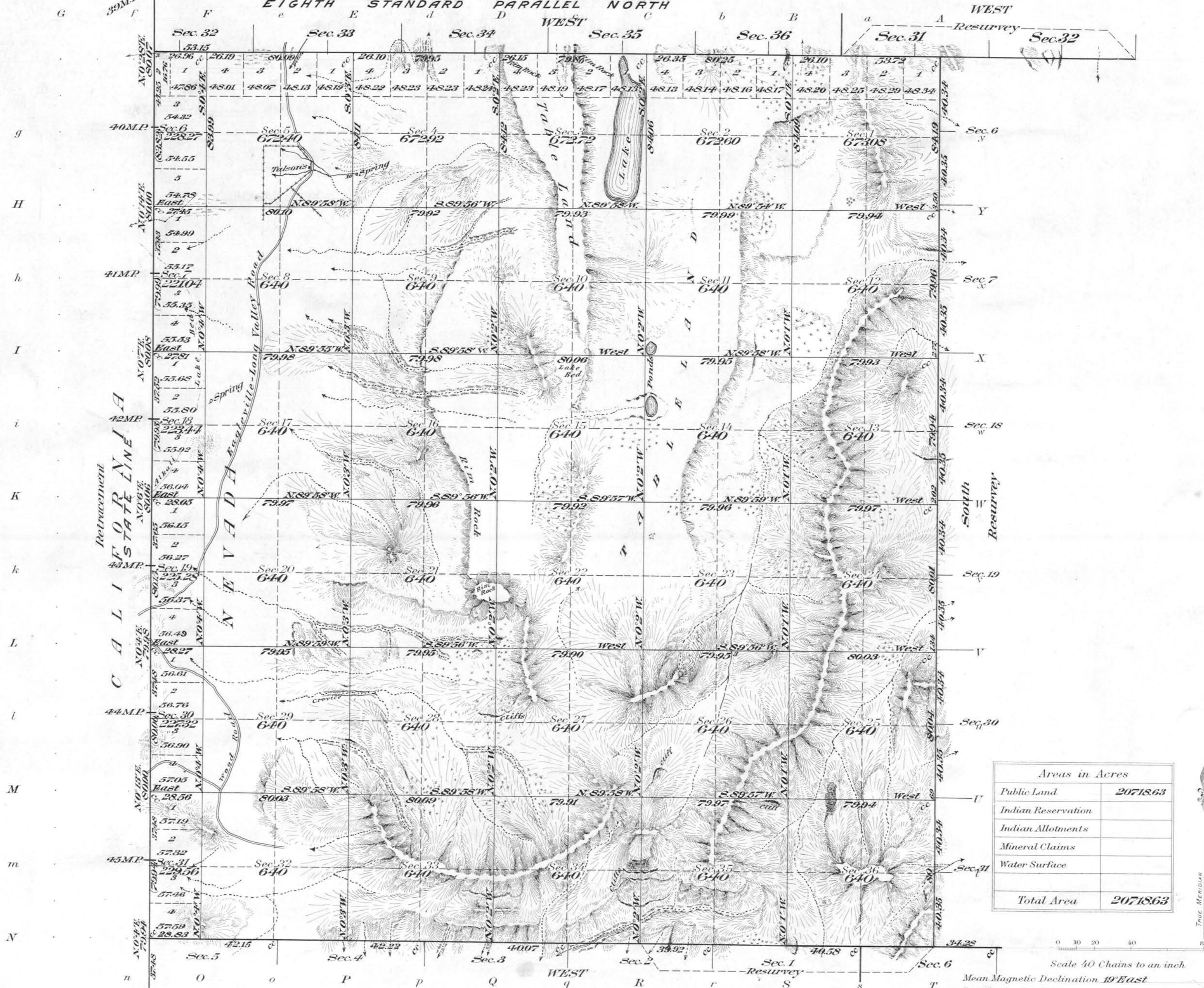


Township No. 40 North Range No. 18 East, M^d Diablo Meridian, Nevada.



Surveys Designated	By Whom Surveyed	Contract No.	Date	Amount of Surveys			When Surveyed	
				Mts.	chs.	fts.	Began	Completed
S. T ^p Lite	James D. Archer	3729	August 6, 1910	3	28	83	August 12, 1911	
Subdivisions	"	"	"	56	79	79	Sept. 1, 1911	October 4, 1911
Eighth Stan. Par. North	"	"	"	4	53	15	August 28, 11	August 29, 11
Eighth St. Par. N. Resur.	"	"	"	2	00	00	August 9, 1911	
S. & E. Bdy. Resurvey	"	"	"	8	04	06	" 14, "	
Retracement State Line	"	"	"	6	03	83	" 30 "	

The above map of Township No. 40 North, Range No. 18 East of the M^d Diablo Meridian Nevada is strictly conformable to the field notes of the survey thereof on file in this office, which have been examined and approved.

U. S. Surveyor General's Office.
 Reno, Nevada, July 24, 1914.

Marion Kyle
 Surveyor General.