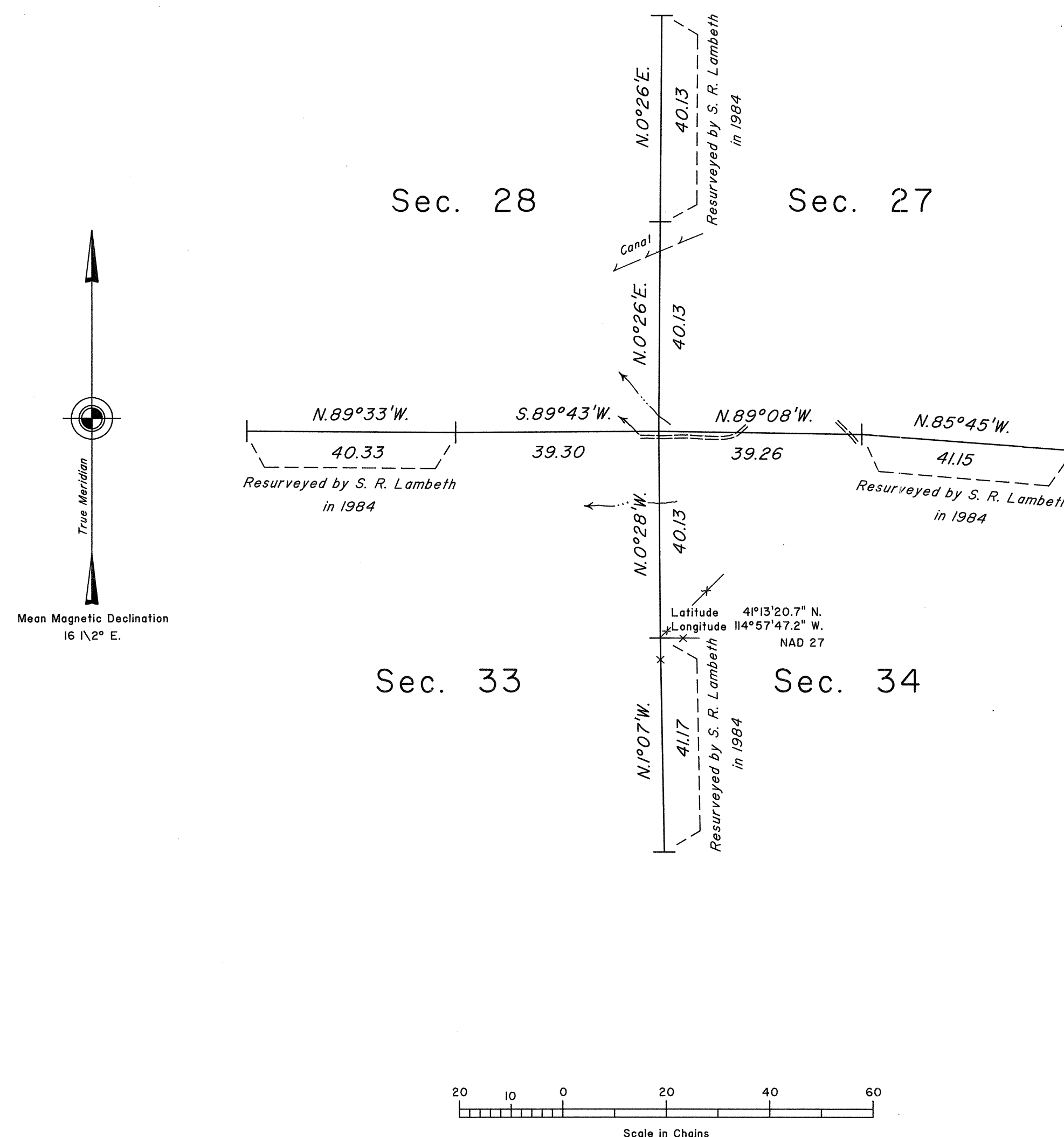


ORIGINAL

# TOWNSHIP 39 NORTH, RANGE 62 EAST, OF THE MOUNT DIABLO MERIDIAN, NEVADA

## CORRECTIVE DEPENDENT RESURVEY



History of the earlier surveys is contained in the field notes.

This plat represents a corrective dependent resurvey of a portion of the subdivisional lines of T. 39 N., R. 62 E., designed to restore the corners in their true original locations according to the best available evidence.

Survey executed by Robert A. Pratt, Cadastral Surveyor, beginning May 11, 1990 and completed May 11, 1990, under Special Instructions dated May 10, 1990, for Group No. 687, Nevada.

UNITED STATES DEPARTMENT OF THE INTERIOR  
BUREAU OF LAND MANAGEMENT

Reno, Nevada September 6, 1990

This plat is strictly conformable to the approved field notes, and the survey, having been correctly executed in accordance with the requirements of law and the regulations of this Bureau, is hereby accepted.

For the Director

*John S. Parnish*  
Chief Cadastral Surveyor

T.39N.,R.62E., M.D.M.