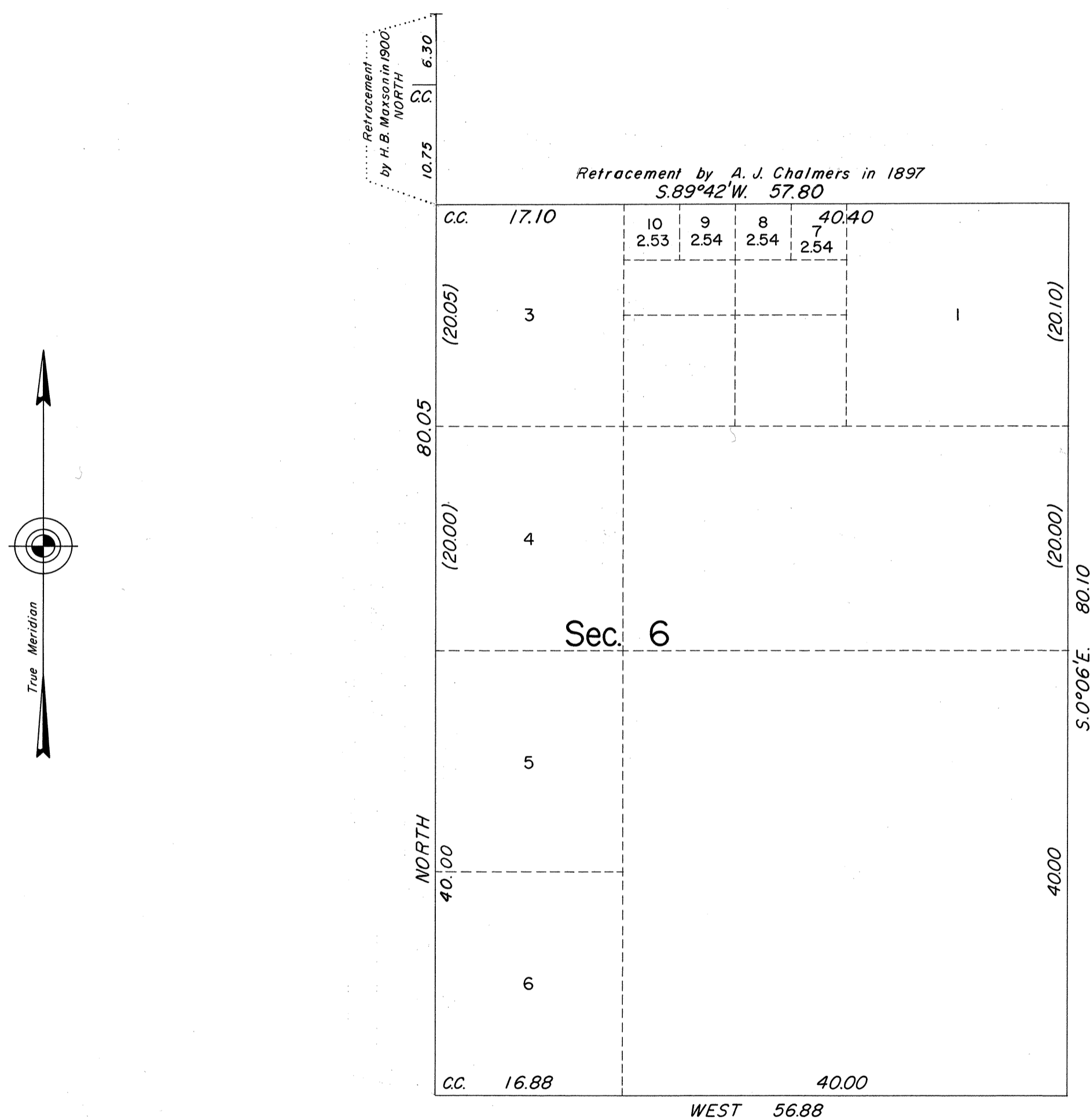


# TOWNSHIP 39 NORTH, RANGE 56 EAST, OF THE MOUNT DIABLO MERIDIAN, NEVADA

## SUPPLEMENTAL PLAT OF SECTION 6



This supplemental plat showing amended lottings in sec. 6, T. 39 N., R. 56 E., is based upon the plat approved July 9, 1891, and upon the plat of T. 39 N., R. 55 E., approved April 6, 1901.

UNITED STATES DEPARTMENT OF THE INTERIOR  
BUREAU OF LAND MANAGEMENT  
Washington, D.C. February 3, 1972

This plat, showing amended lottings, is based upon the official records and, having been correctly prepared in accordance with the regulations, is hereby accepted.

For the Director

*Clark L. Humm*

Chief, Division of Cadastral Survey