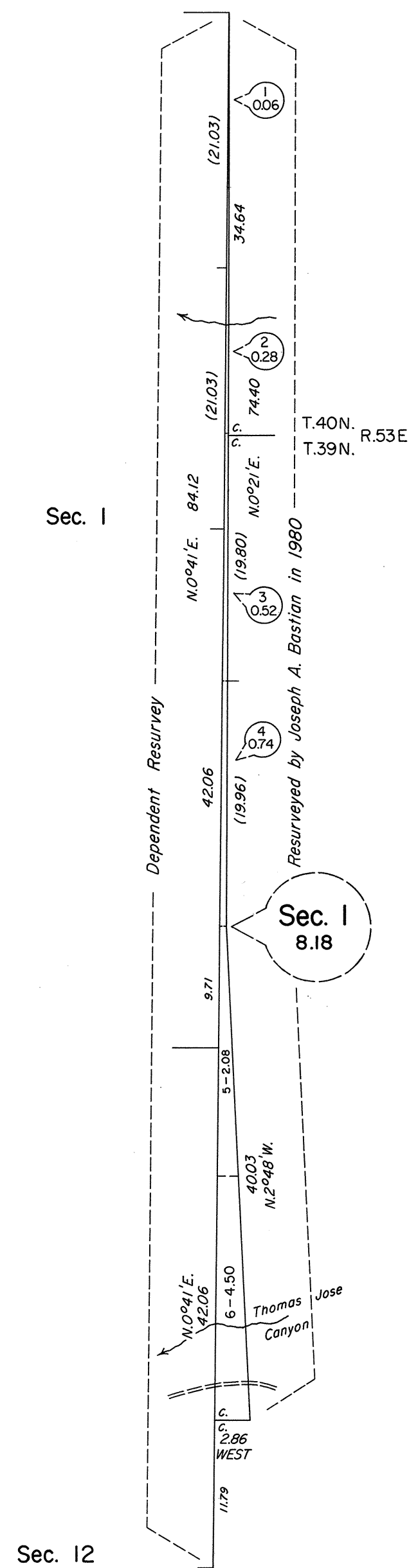
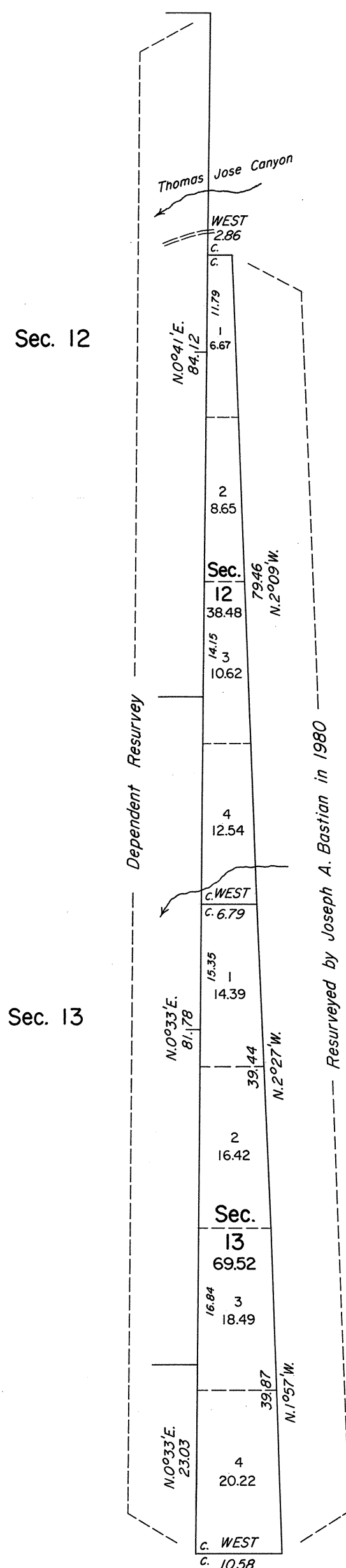
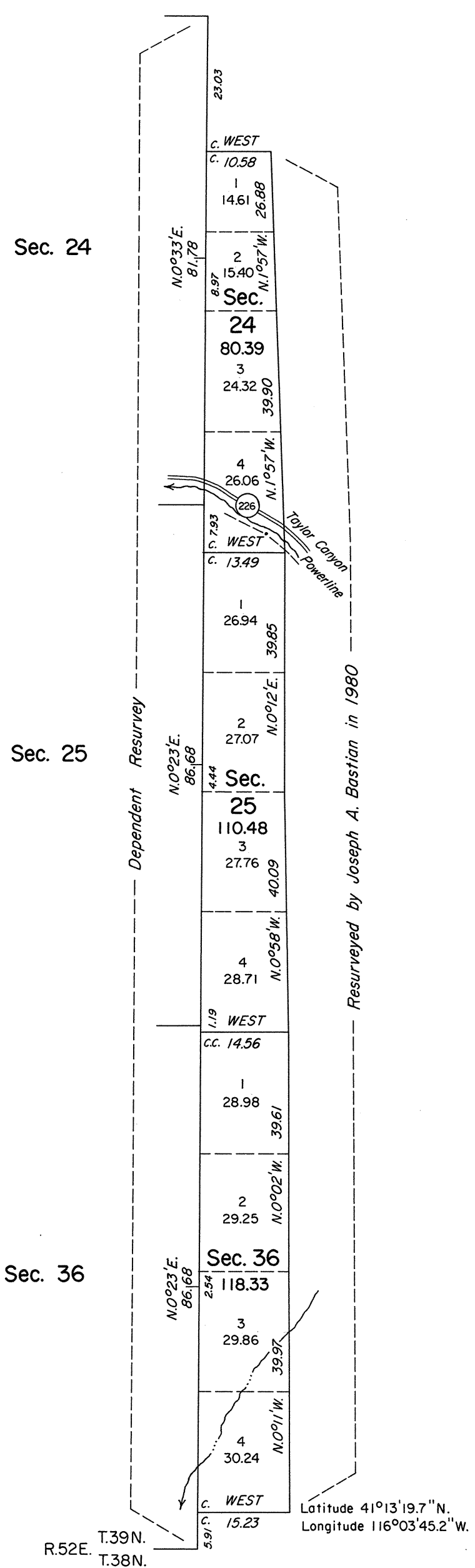
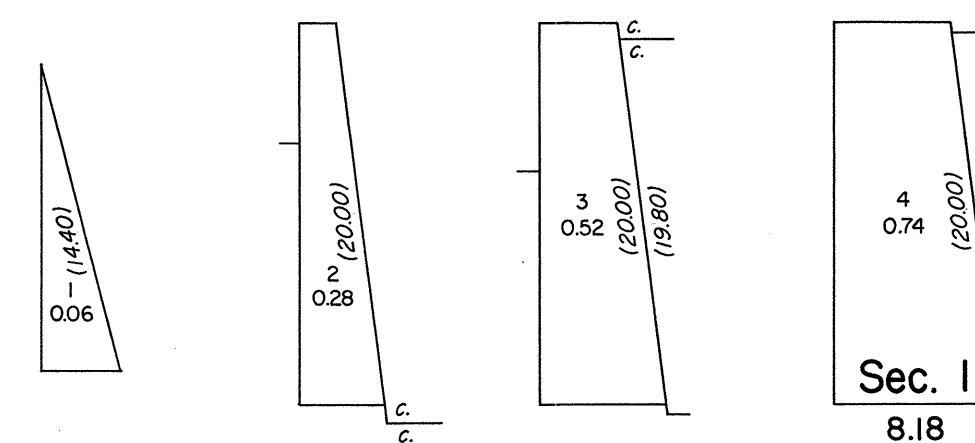


TOWNSHIP 39 NORTH, RANGE 52 1/2 EAST, OF THE MOUNT DIABLO MERIDIAN, NEVADA
DEPENDENT RESURVEY AND SURVEY

OFFICIALLY FILED
NEVADA STATE OFFICE
10:00 A.M. AUGUST 1, 1983



DETAIL OF LOTS 1-4 OF SEC. 1



NOT TO SCALE

History of the earlier surveys is contained in the field notes.

This plat represents a dependent resurvey of the east boundary of T. 39 N., R. 52 E., designed to restore the corners in their true original locations according to the best available evidence, and the survey of the south boundary and the subdivisional lines of T. 39 N., R. 52 1/2 E.

Survey executed by Joseph A. Bastian, Cadastral Surveyor, beginning May 6, 1981, and completed July 24, 1981, pursuant to Special Instructions dated May 7, 1979 and Supplemental Special Instructions dated August 11, 1980, for Group No. 574, Nevada

UNITED STATES DEPARTMENT OF THE INTERIOR
BUREAU OF LAND MANAGEMENT

Reno, Nevada

May 5, 1983

This plat is strictly conformable to the approved field notes, and the survey, having been correctly executed in accordance with the requirements of law and the regulations of this Bureau, is hereby accepted.

For the Director

Laurel E. Bland

Acting Deputy State Director, Operations