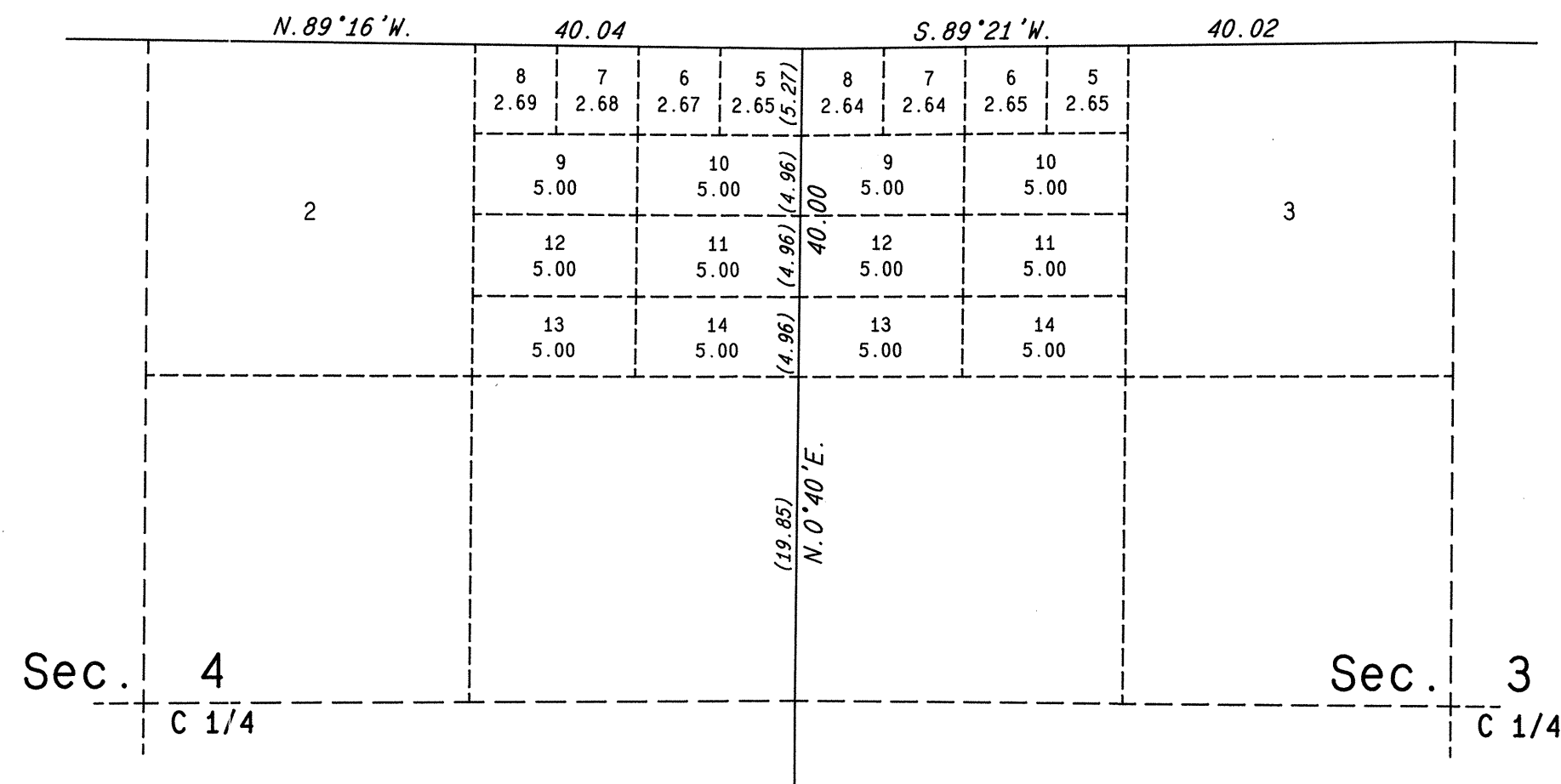


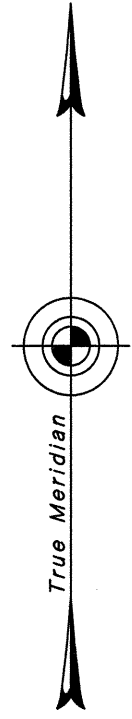
ORIGINAL

TOWNSHIP 39 NORTH, RANGE 52 EAST, OF THE MOUNT DIABLO MERIDIAN, NEVADA

SUPPLEMENTAL PLAT OF NW1/4 SECTION 3 AND NE1/4 SECTION 4



This plat, showing amended lottings of original lot 4, sec. 3 and original lot 1, sec. 4, T. 39 N., R. 52 E., Mount Diablo Meridian, Nevada, is based upon the plats approved February 25, 1871, and January 13, 1885, and the plat accepted September 14, 1983.



UNITED STATES DEPARTMENT OF THE INTERIOR  
BUREAU OF LAND MANAGEMENT

Reno, Nevada February 21, 1990

This plat, showing amended lottings, is based upon the official records and, having been correctly prepared in accordance with the regulations of this Bureau, is hereby accepted.

For the Director

*John S. Parrish*  
Chief Cadastral Surveyor

