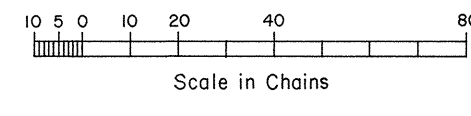
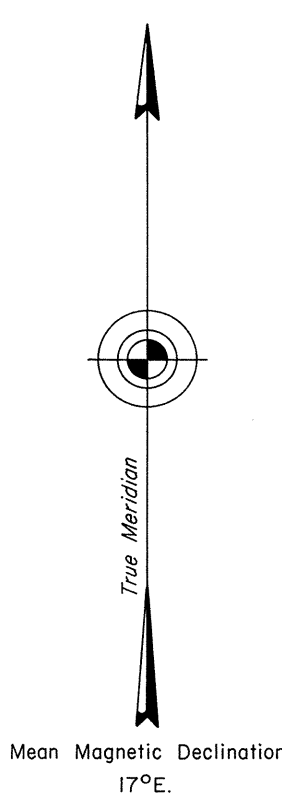
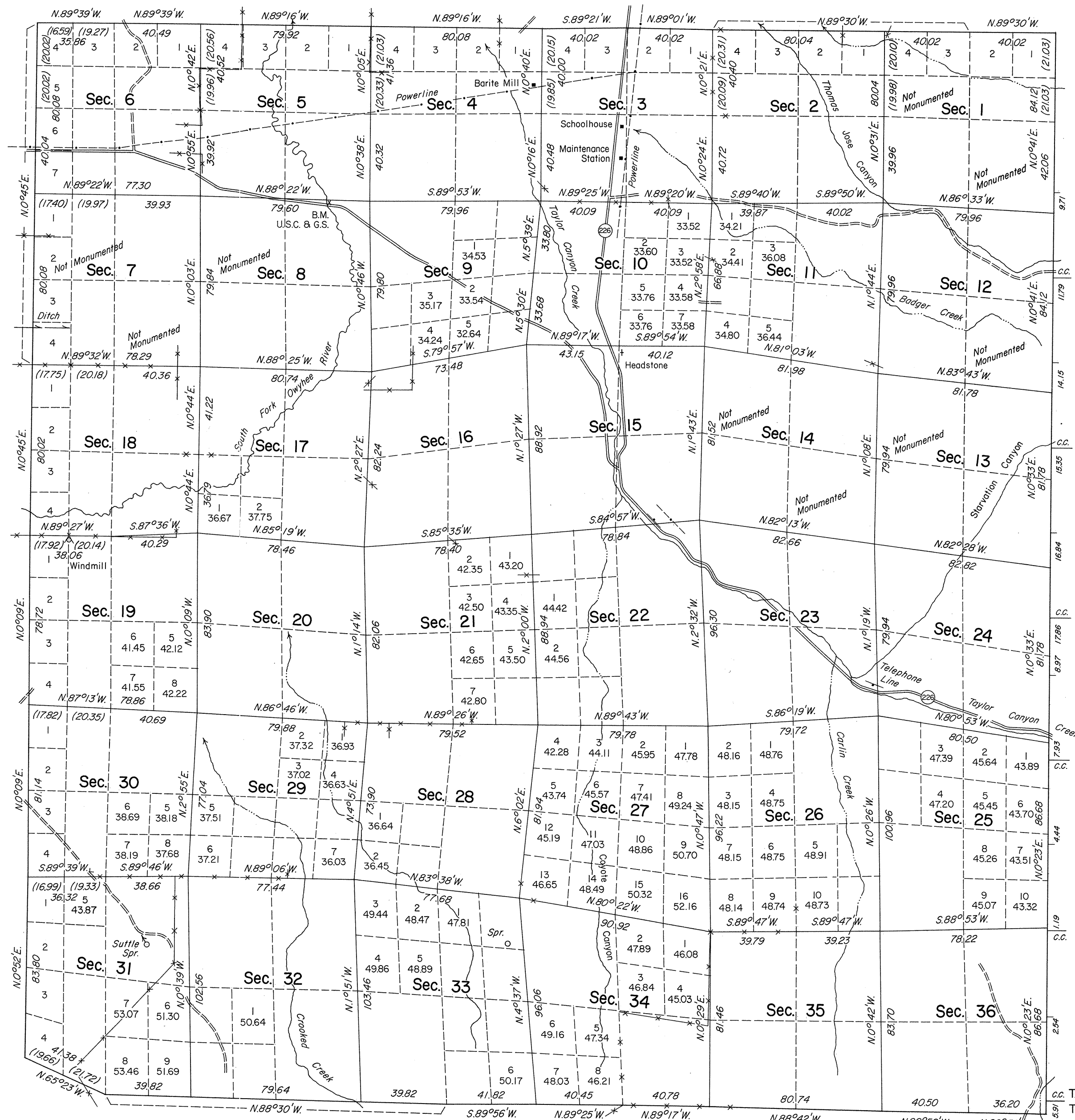


TOWNSHIP 39 NORTH, RANGE 52 EAST, OF THE MOUNT DIABLO MERIDIAN, NEVADA

DEPENDENT RESURVEY



Sec. 1
Sec. 12
Sec. 13
Sec. 24
Sec. 25
Sec. 36

History of the earlier surveys is contained in the field notes.

A dependent resurvey of the north, east and west boundaries was concurrently executed under this same Group and the field notes thereof are included in the notes of T. 40 N., R. 52 E., T. 39 N., R. 52½ E., and T. 39 N., R. 51 E., respectively.

This plat represents a dependent resurvey of the south boundary and the subdivisional lines of T. 39 N., R. 52 E., designed to restore the corners in their true original locations according to the best available evidence.

Lottings and areas, except as shown hereon, are as shown on the plat approved February 25, 1871 and January 13, 1885.

Survey executed by Joseph A. Bastian, Cadastral Surveyor, May 22, 1979 to July 28, 1981, under Special Instructions dated May 7, 1979, for Group No. 574, Nevada.

UNITED STATES DEPARTMENT OF THE INTERIOR
BUREAU OF LAND MANAGEMENT

Reno, Nevada September 14, 1983

This plat is strictly conformable to the approved field notes, and the survey, having been correctly executed in accordance with the requirements of law and the regulations of this Bureau, is hereby accepted.

For the Director
J. J. Dzialuck
Deputy State Director, Operations

cc. T.39N. R.52½ E.
T.38N.
Latitude 41°13'15.8"N.
Longitude 116°03'58.4"W.