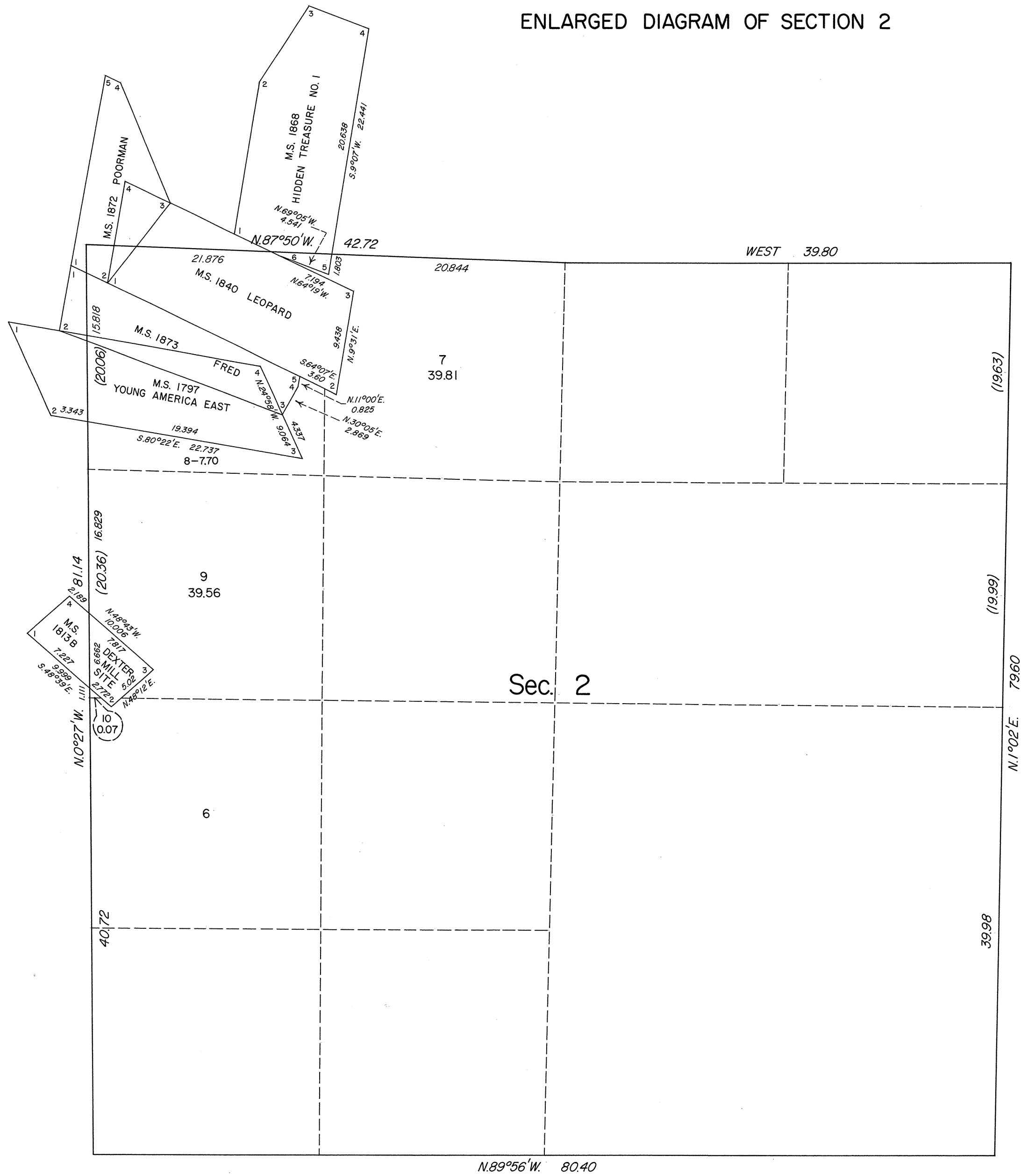
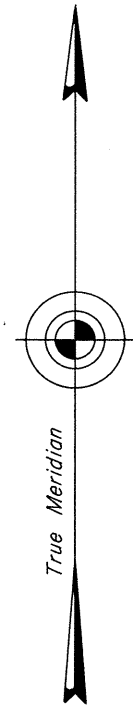


TOWNSHIP 39 NORTH, RANGE 51 EAST, OF THE MOUNT DIABLO MERIDIAN, NEVADA  
ENLARGED DIAGRAM OF SECTION 2

OFFICIALLY FILED  
NEVADA STATE OFFICE  
MAY 20, 1983



Reference should be made to Sheet No. 1 for survey information.

Unless otherwise indicated in the field notes, all courses and distances shown on the plat along the perimeter of the mineral segregation areas, were taken or computed from the appropriate Mineral Survey record.

UNITED STATES DEPARTMENT OF THE INTERIOR  
BUREAU OF LAND MANAGEMENT

Reno, Nevada

May 5, 1983

This plat is strictly conformable to the approved field notes, and the survey, having been correctly executed in accordance with the requirements of law and the regulations of this Bureau, is hereby accepted.

For the Director

*Lacel E. Bland*

Acting Deputy State Director, Operations