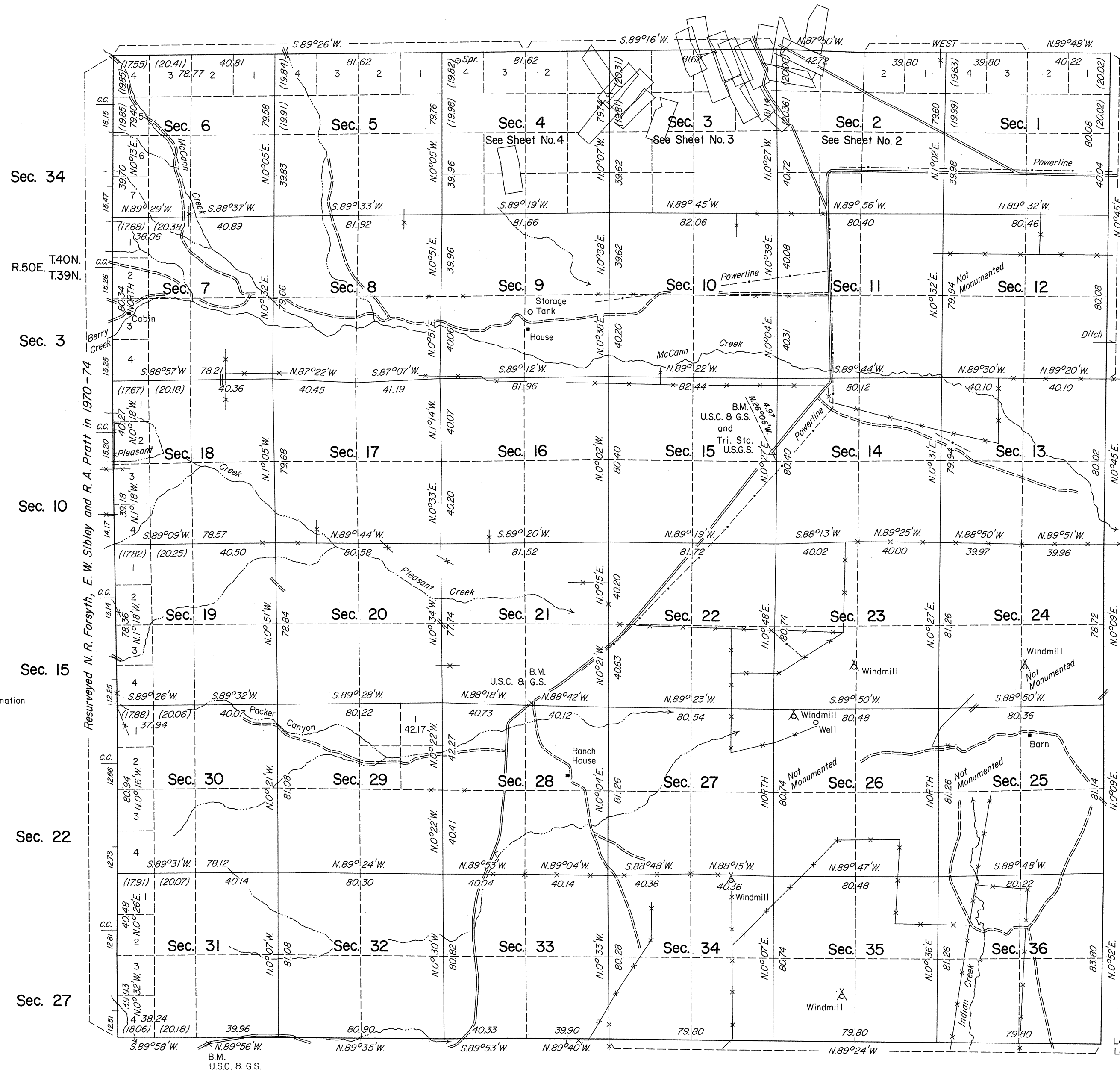


TOWNSHIP 39 NORTH, RANGE 51 EAST, OF THE MOUNT DIABLO MERIDIAN, NEVADA DEPENDENT RESURVEY

OFFICIALLY FILED
NEVADA STATE OFFICE
MAY 20, 1983



History of the earlier surveys is contained in the field notes.

This plat, in four sheets, represents a dependent resurvey of the south, east and north boundaries and the subdivisional lines and the retracement and remonumentation of certain corners of Mineral Survey Nos. 38 & 37, 39, 41, 42 & 38, 1797, 1813B, 1814, 1839, 1840, 1868, 1873, 1875, 2928 and 3490 of T. 39 N., R. 51 E., designed to restore the corners in their true original locations according to the best available evidence.

Lottings and areas, except as shown hereon, are as shown on plats approved February 25, 1871, January 13, 1885, and an undated drawing of relottings in secs. 2 and 3.

Survey executed by Joseph A. Bastian, Cadastral Surveyor, May 29, 1979 to July 28, 1981 under Special Instructions dated May 7, 1979, and Supplemental Special Instructions dated November 21, 1979, for Group No. 574, Nevada.

For enlargements of sections 2, 3 and 4, see Sheet Nos. 2, 3 and 4, respectively.

UNITED STATES DEPARTMENT OF THE INTERIOR
BUREAU OF LAND MANAGEMENT

Reno, Nevada May 5, 1983

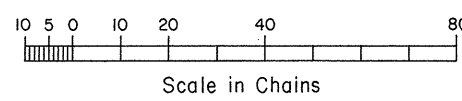
This plat is strictly conformable to the approved field notes, and the survey, having been correctly executed in accordance with the requirements of law and the regulations of this Bureau, is hereby accepted.

For the Director

Lacel E. Bland

Acting Deputy State Director, Operations

Latitude 41°13'32.7"N.
Longitude 116°10'50.6"W.



True Meridian
Mean Magnetic Declination
17 1/2° E.

Resurveyed N. R. Forsyth, E. W. Sibley and R. A. Pratt in 1970-74