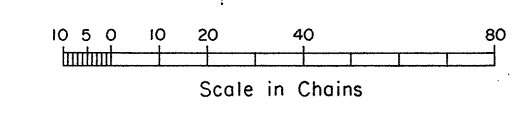
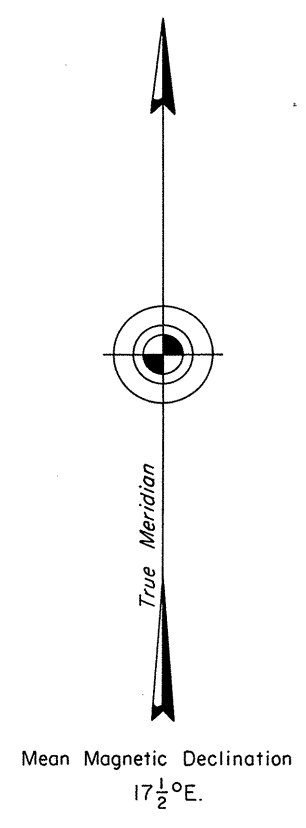
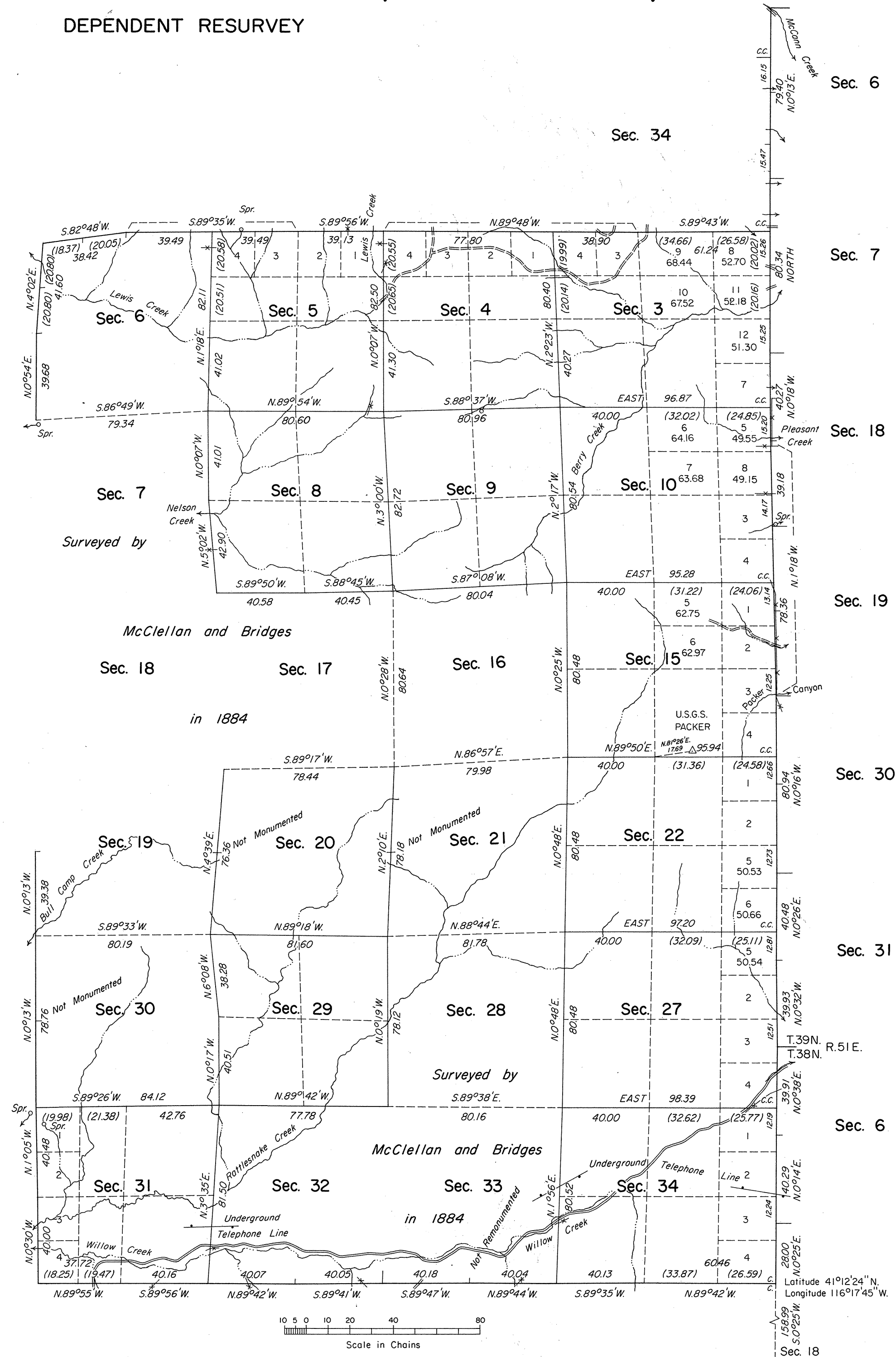


TOWNSHIP 39 NORTH, RANGE 50 EAST, OF THE MOUNT DIABLO MERIDIAN, NEVADA

DEPENDENT RESURVEY



A history of surveys is contained in the field notes.

A dependent resurvey of the north boundary was executed concurrently under T. 40 N., R. 50 E., of this Group.

This plat represents a dependent resurvey of a portion of the west boundary of T. 38 N., R. 51 E., the west boundary of T. 39 N., R. 51 E., and the south boundary, a portion of the west boundary and a portion of the subdivisional lines of T. 39 N., R. 50 E., Mount Diablo Meridian, Nevada, designed to restore the corners in their true original locations according to the best available evidence.

Lottings and areas, except as shown hereon, are as shown on the plat approved January 13, 1885.

Survey executed by Neil R. Forsyth, Eldon W. Sibley and Robert A. Pratt, Cadastral Surveyors, October 5, 1970, to July 29, 1974, under Special Instructions dated August 18, 1970, and Supplemental Special Instructions dated May 21, 1974, for Group No. 473, Nevada.

UNITED STATES DEPARTMENT OF THE INTERIOR
BUREAU OF LAND MANAGEMENT
Washington, D.C. July 11, 1977

This plat is strictly conformable to the approved field notes, and the survey, having been correctly executed in accordance with the requirements of law and the regulations of this Bureau, is hereby accepted.

For the Director
Bernard W. Jolley
Chief, Division of Cadastral Survey