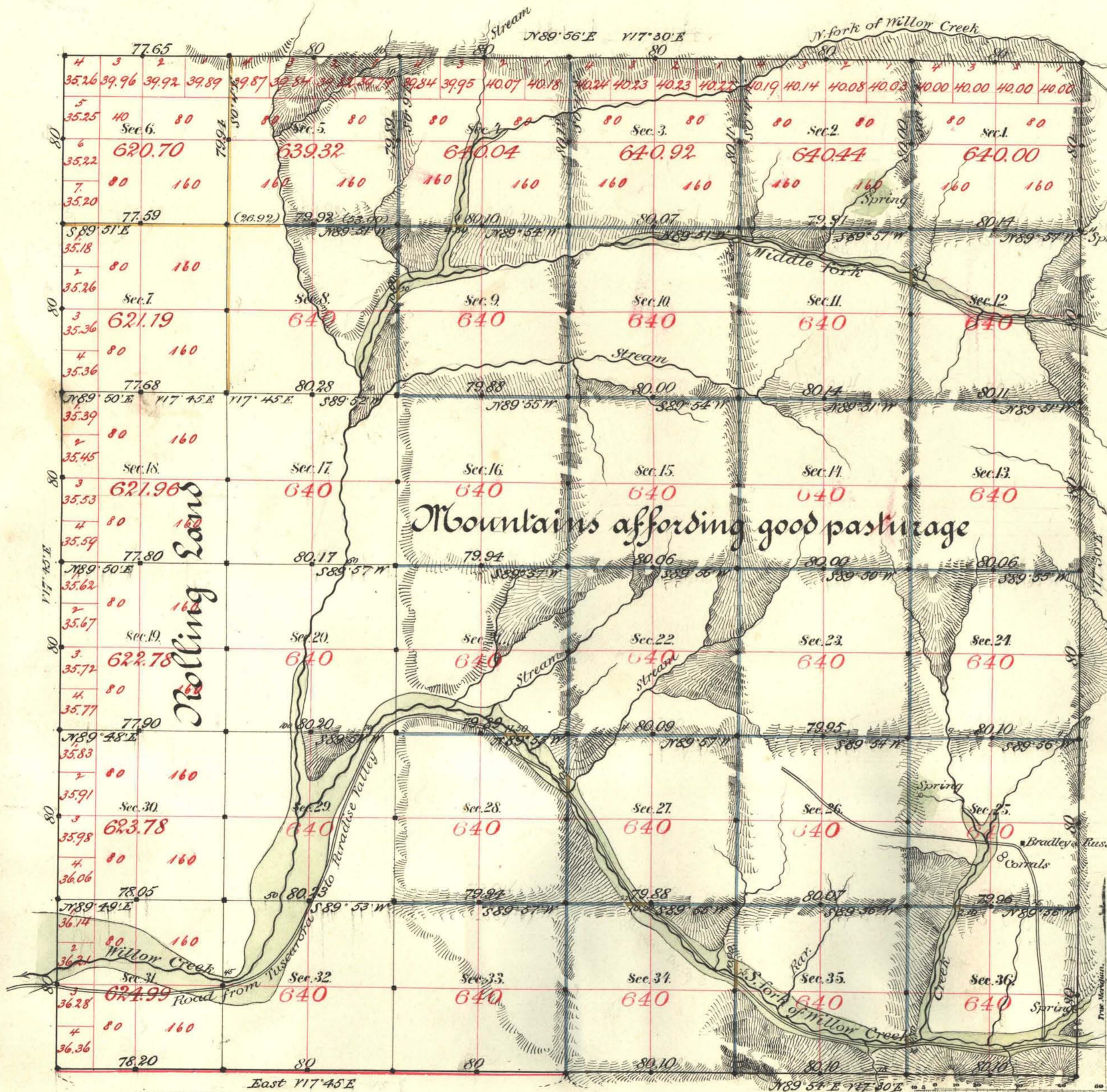


TOWNSHIP N<sup>o</sup> 39 NORTH RANGE N<sup>o</sup> 49 EAST MOUNT DIABLO MERIDIAN



Aggregate Area of Public Land surveyed by  
 Hatch, Eaton & Smyles (Nov. 16<sup>th</sup> 1872) 5364.23 Ac.  
 by Stewart & McClelland (Mar. 14<sup>th</sup> 1884) 17571.89 "  
 Aggregate 22936.12 "

Old work commenced Jan. 22<sup>nd</sup> 1873  
 " " completed " 23<sup>rd</sup> "  
 New " commenced May 26<sup>th</sup> 1884  
 " " completed June 2<sup>nd</sup> "

Old work approved by E.S. Davis Feb. 13<sup>th</sup> 1873

Old work run with a Var. of 17<sup>th</sup> 45' East  
 New " " " " " 17<sup>th</sup> 30' "

Surveys Designated.	By Whom Surveyed.	Date of Contract.	Amount of Surveys.	When Surveyed.	Acres.
S. bdy. red & W. bdy. Hatch, Eaton & Smyles		Nov. 16 <sup>th</sup> 1872	28 - 28 - 27	1872	641
Subs. black	" "	" "	15 - 72 - 31	Jan. 1873	"
N.E. & S. black	McClelland & Stewart	Mar. 14 <sup>th</sup> 1884	14 - 77 - 95	1884	169
Subdivs. yellow	" "	" "	7 - 20 - 75	May & June "	"
" blue	" "	" "	39 - 57 - 11	" "	"

The above Map of Township No. 39 North of Range No. 49 East  
 Mount Diablo Meridian is strictly conformable to the field notes of the survey  
 thereof on file in this Office, which have been examined and approved.

Surveyor General's Office, Reno, *L. L. Downing*  
 U.S. Surv. Gen'l. of Nevada.  
 August 23<sup>rd</sup> 1884