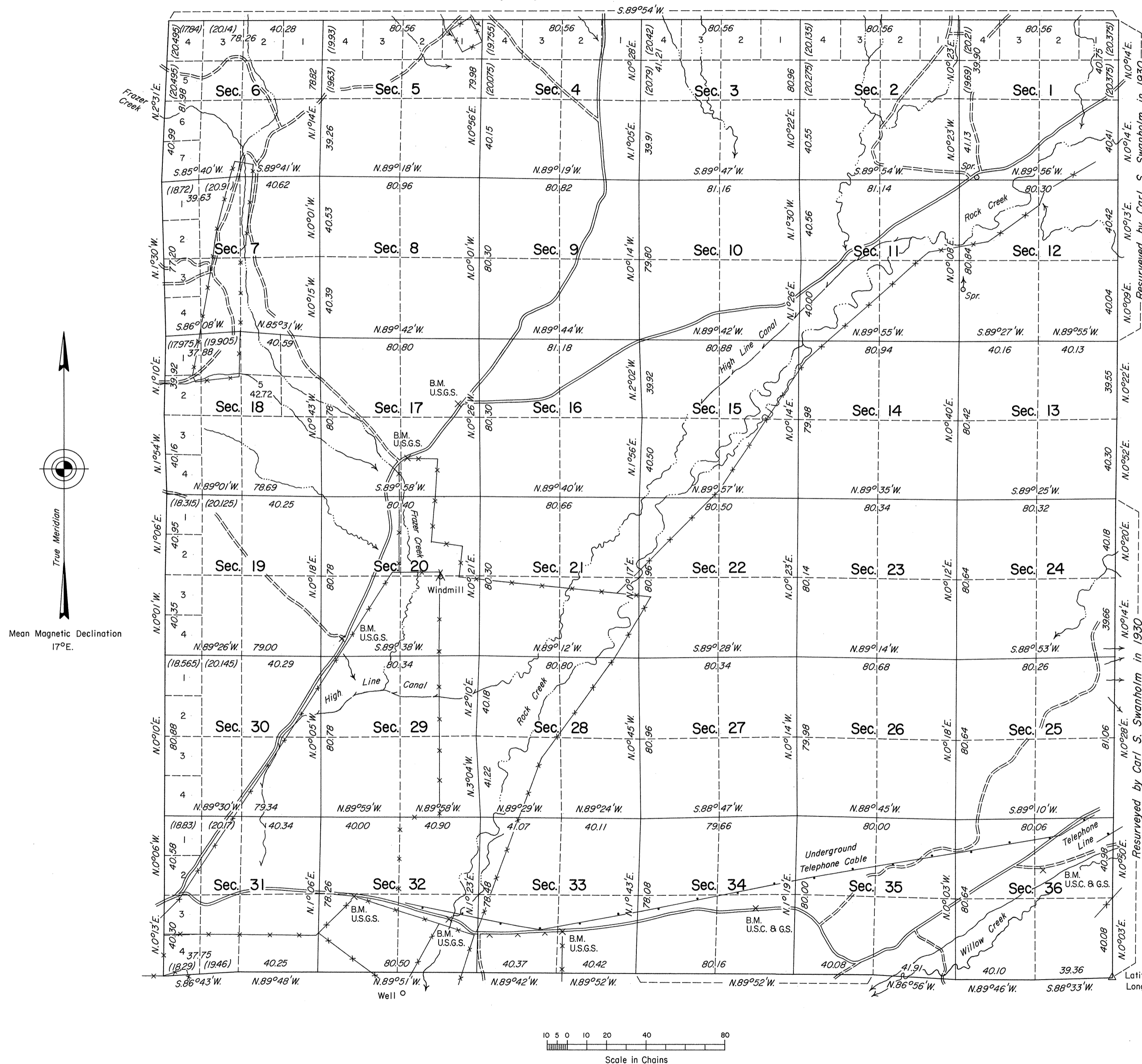


TOWNSHIP 39 NORTH, RANGE 47 EAST, OF THE MOUNT DIABLO MERIDIAN, NEVADA
DEPENDENT RESURVEY

Resurveyed by Eldon W. Sibley and Robert A. Pratt in 1970



A history of surveys is contained in the field notes.

This plat represents a dependent resurvey of the south and west boundaries a portion of the east boundary and the subdivisional lines of T. 39 N., R. 47 E., designed to restore the corners in their true original locations according to the best available evidence.

Except as indicated hereon, the lottings and areas are as shown on the plats approved February 13, 1873 and March 31, 1885.

Survey executed by Joseph A. Bastian, Stephen R. Lambeth and David D. Morlan, Cadastral Surveyors, beginning August 27, 1981, and completed October 2, 1981, pursuant to Special Instructions dated July 17, 1981, for Group No. 597, Nevada.

UNITED STATES DEPARTMENT OF THE INTERIOR
BUREAU OF LAND MANAGEMENT

Reno, Nevada October 21, 1983

This plat is strictly conformable to the approved field notes, and the survey, having been correctly executed in accordance with the requirements of law and the regulations of this Bureau, is hereby accepted.

For the Director

Lael E. Bland

Acting Deputy State Director, Operations

U.S.G.S.
Latitude 41°12'22.30"N.
Longitude 116°36'13.08"W.