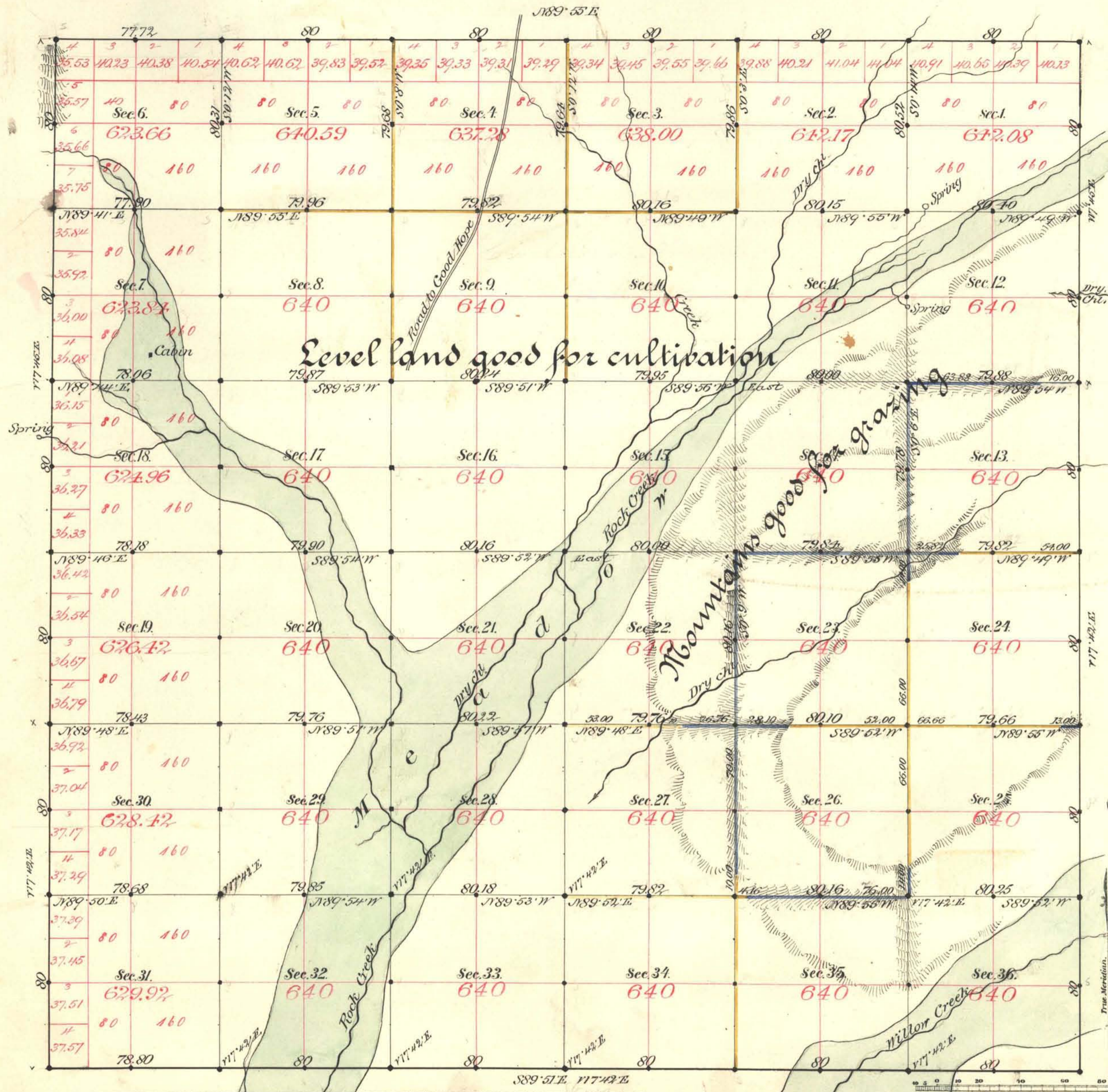


TOWNSHIP N^o 39 NORTH RANGE N^o 47 EAST MOUNT DIABLO MERIDIAN



Aggregate Area of Public Land surveyed by
Ketch, Eaton & Smyth Nov. 10th 1842
" by Mc Clellan & Bridge Nov. 11th 1851
Aggregate 13,362.62 Ac.
9,594.72 "
2,295.73 "

Old work commenced January 4th 1843
" " completed " 10th "
New " commenced " 30th 1855
" " completed February 3rd "

Old work approved by D. D. Davis Feb. 13th 1873

Subdivisions not noted run with a Van. of N^o 47 East

Surveys Designated.	By Whom Surveyed.	Date of Contract.	Amount of Surveys.	When Surveyed.
Township lines	Ketch, Eaton & Smyth	Nov. 10 th 1842	23 - 05 - 52	1842
Subdivisions black	" " "	" " "	37 - 73 - 01	Jan. 1843
" yellow	Mc Clellan & Bridge	Nov. 11 th 1851	17 - 66 - 76	" & Oct. 1855
" blue	" " "	" " "	7 - 11 - 34	" " "

The above Map of Township No. 39 North of Range No. 47 East
Mount Diablo Meridian is strictly conformable to the field notes of the survey
thereof on file in this Office, which have been examined and approved.
Surveyor General's Office, Reno, }
March 31st 1855 } *W. B. Forming*
U.S. Surv. Genl. of Nevada.