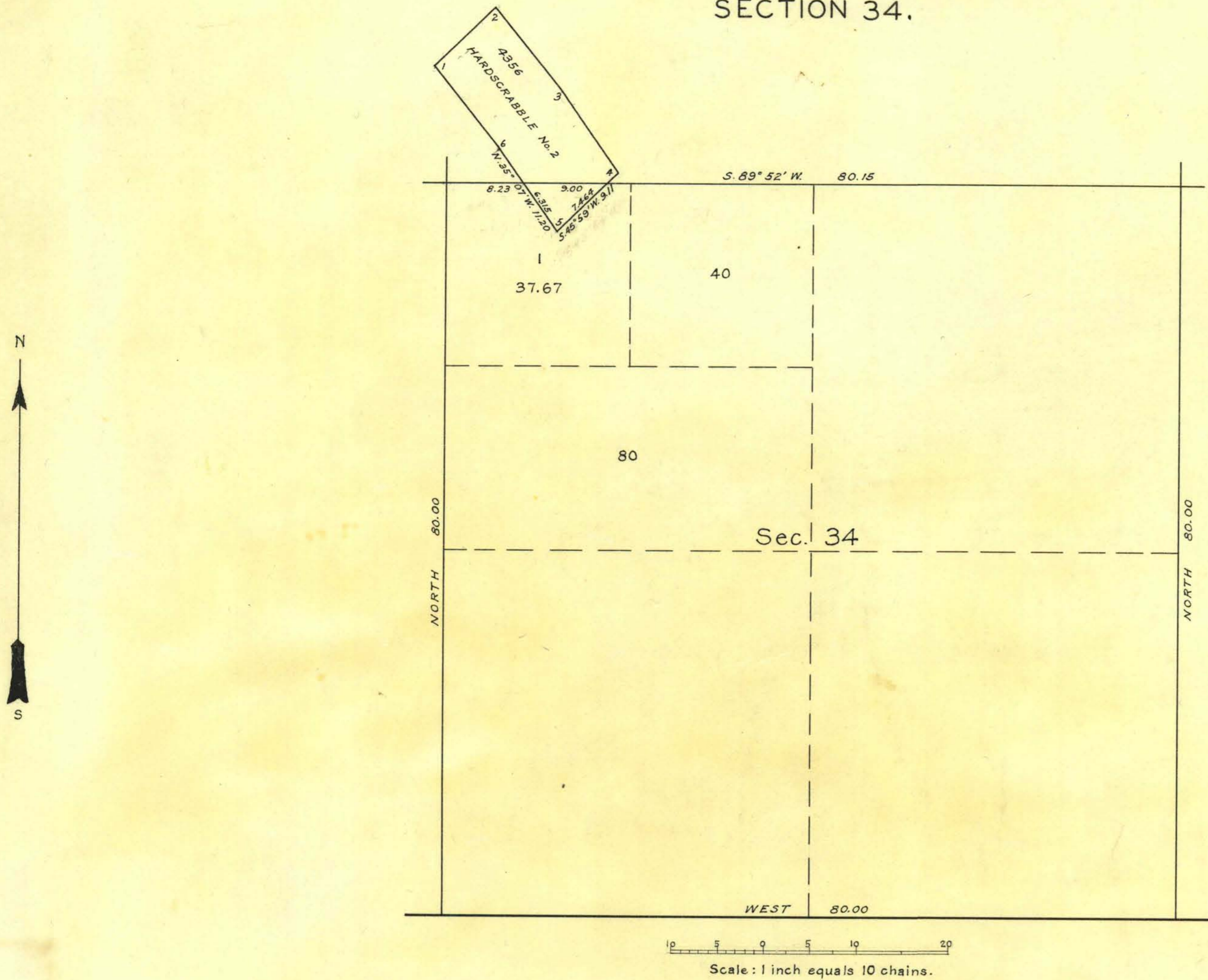


TOWNSHIP N° 39 NORTH, RANGE N° 46 EAST, OF THE MOUNT DIABLO MERIDIAN, NEVADA.
SUPPLEMENTAL PLAT OF
SECTION 34.



PUBLIC SURVEY OFFICE
RENO, NEVADA, APRIL 21, 1942.

THIS SUPPLEMENTAL PLAT OF SECTION 34, TOWNSHIP NO. 39 NORTH, RANGE NO. 46 EAST, OF THE MOUNT DIABLO MERIDIAN, NEVADA, BASED UPON THE PLATS APPROVED FEBRUARY 13, 1873 AND APRIL 17, 1875, SHOWING LOTTING OF FRACTIONAL AREA CREATED BY THE SEGREGATION OF MINERAL SURVEY NO. 4356, HARDCRABBLE NO. 2 LODGE, TO ACCOMMODATE STOCK-RAISING HOMESTEAD ENTRY CARSON CITY 017738, PREPARED IN ACCORDANCE WITH INSTRUCTIONS CONTAINED IN THE COMMISSIONER'S LETTER "N" DATED MARCH 23, 1942, IS HEREBY APPROVED.

Harry S. Palmer
OFFICE CADASTRAL ENGINEER

UNITED STATES
DEPARTMENT OF THE INTERIOR
GENERAL LAND OFFICE
WASHINGTON, D.C., MAY 12, 1942.

THE AMENDED LOTTING REPRESENTED BY THIS SUPPLEMENTAL PLAT HAVING BEEN CORRECTLY MADE IN ACCORDANCE WITH THE REGULATIONS OF THIS OFFICE, THE PLAT IS HEREBY ACCEPTED.

Joel David Wolfson
ASSISTANT COMMISSIONER

Handwritten initials and date