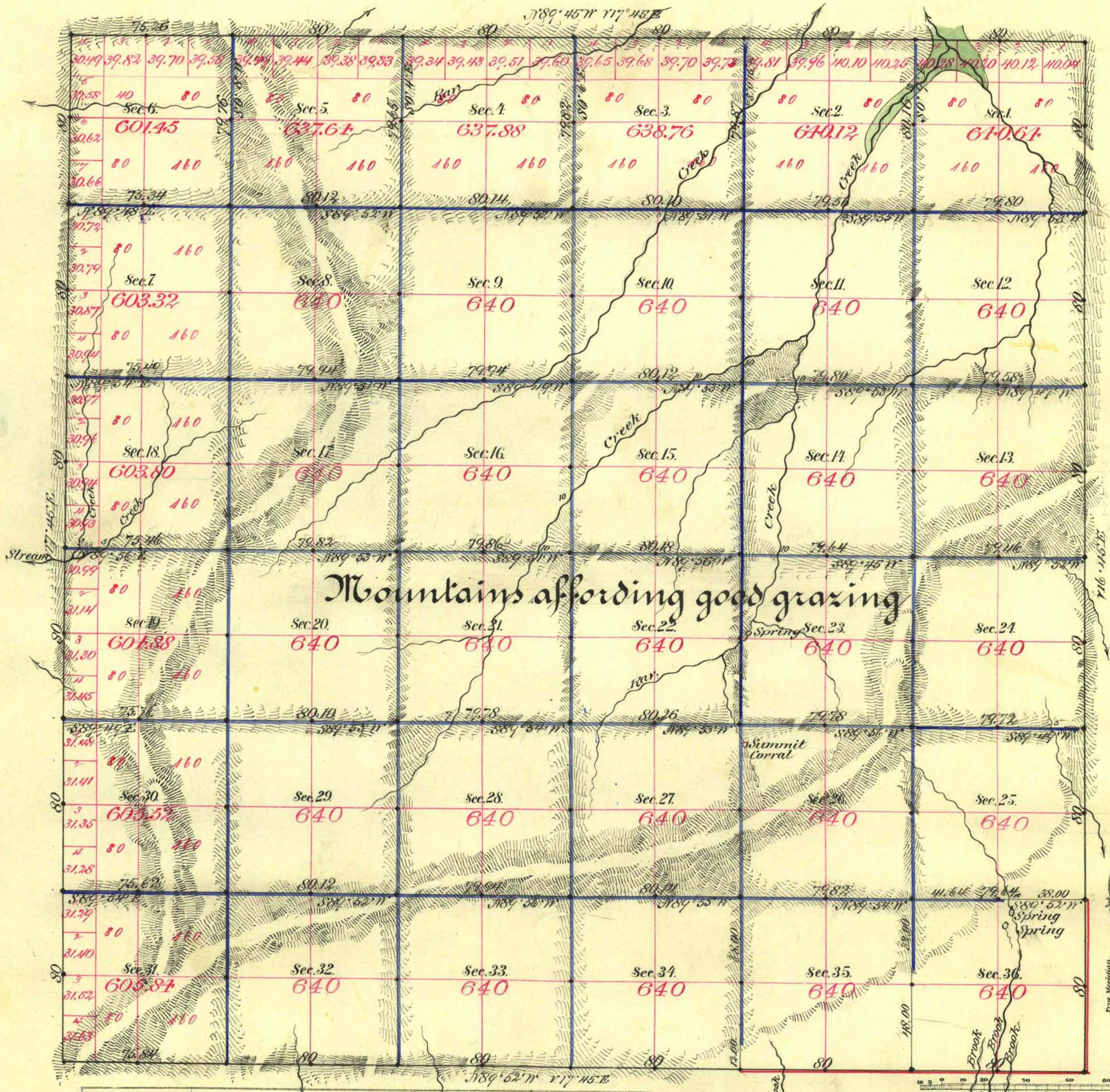


TOWNSHIP N^o 39 NORTH RANGE N^o 45 EAST MOUNT DIABLO MERIDIAN



Aggregate Area of Public Land surveyed 27,819.86 Acres

Commenced January 20th 1885
Completed February 7th "

Subdivs run with a Var. of 17' 45" East

Surveys Designated.	By Whom Surveyed.	Date of Contract.	Amount of Surveys.	When Surveyed.
Ex. & Ady. and Part of Sp. lines	W. C. Calvert & Sons	Nov. 16 th 1842	29 - 25 - 00	1842
Subdivs. black	S. H. Minard	" 10 th 1884	30 - 71 - 10	1884
" blue	W. C. Calvert & Sons	" 11 th "	1 - 18 - 00	Jan. 1885
" "	" "	" "	58 - 36 - 29	" "

7th Cont
54
173
174
The above Map of Township No. 39 North of Range No. 45 East Mount Diablo Meridian is strictly conformable to the field notes of the survey thereof on file in this Office, which have been examined and approved.
Surveyor General's Office, Reno, 66 Covving
U.S. Surv. Genl. of Nevada.
Mar. 21st 1885