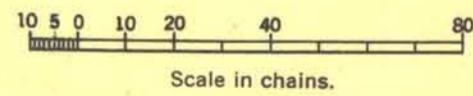
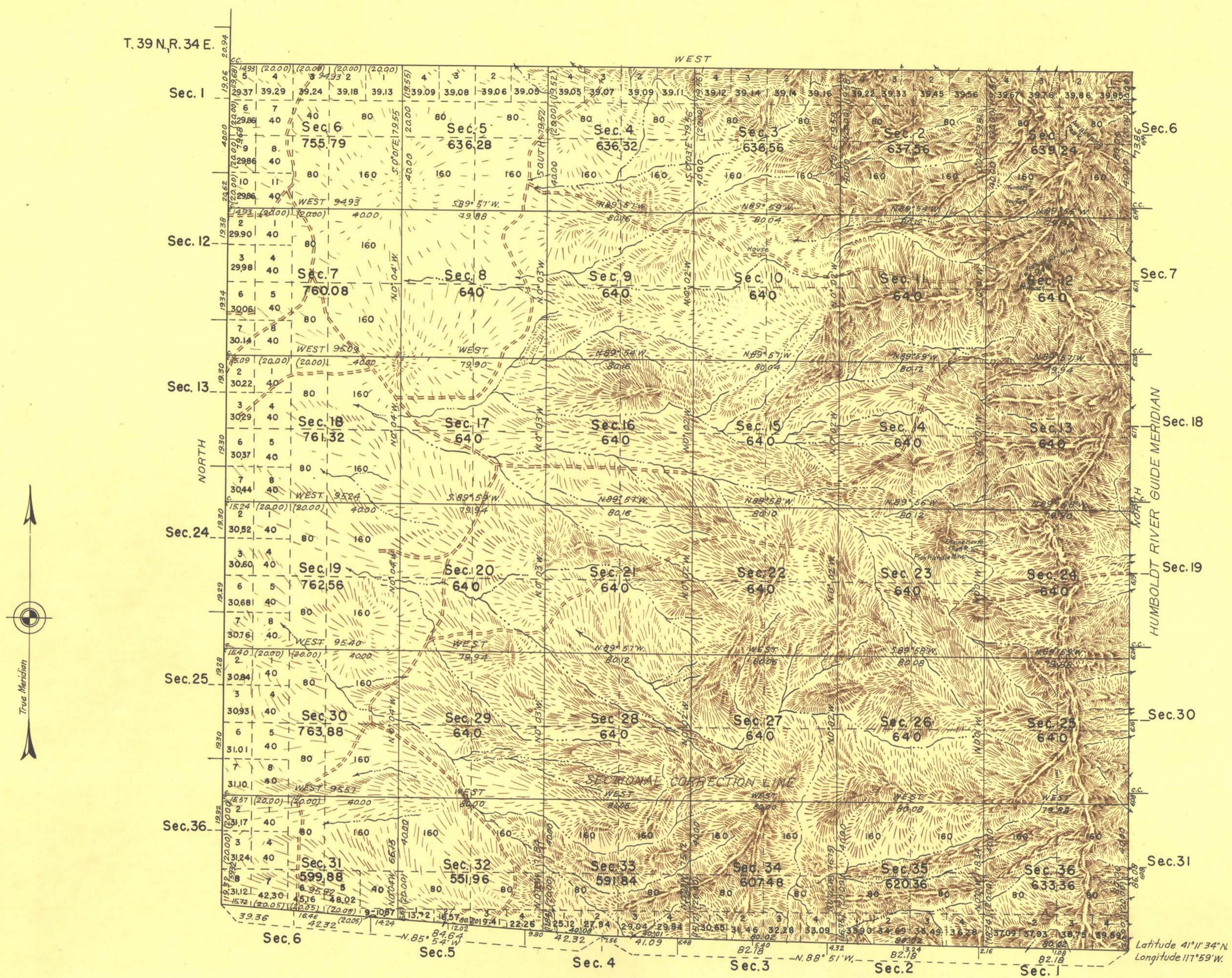


TOWNSHIP No. 39 NORTH, RANGE No. 35 EAST, OF THE MOUNT DIABLO MERIDIAN, NEVADA.

T. 39 N., R. 34 E.



Mean Magnetic Declination 20°00'E.

Area surveyed: 23394.47 acres.

LINES DESIGNATED	BY WHOM SURVEYED	GROUP NO.	DATE OF SPECIAL INSTRUCTIONS	WHEN SURVEYED	
				BEGUN	COMPLETED
Exterior Subdivisional	Philip L. Inch	259	April 4, 1939	June 3, 1940	Aug. 3, 1940
				July 9, 1940	Aug. 22, 1940

UNITED STATES DEPARTMENT OF THE INTERIOR  
BUREAU OF LAND MANAGEMENT

Denver, Colorado, April 14, 1947

This plat is strictly conformable to the field notes of the survey which have been examined and approved.

*Philip L. Inch*  
Acting Chief Cadastral Engineer.

Washington, D. C., October 2, 1947

The survey represented by this plat, having been correctly executed in accordance with the requirements of law and the regulations of this office, is hereby accepted.

*Fred Johnson*  
Director

Comput. G. N.  
Plat B.S.L.