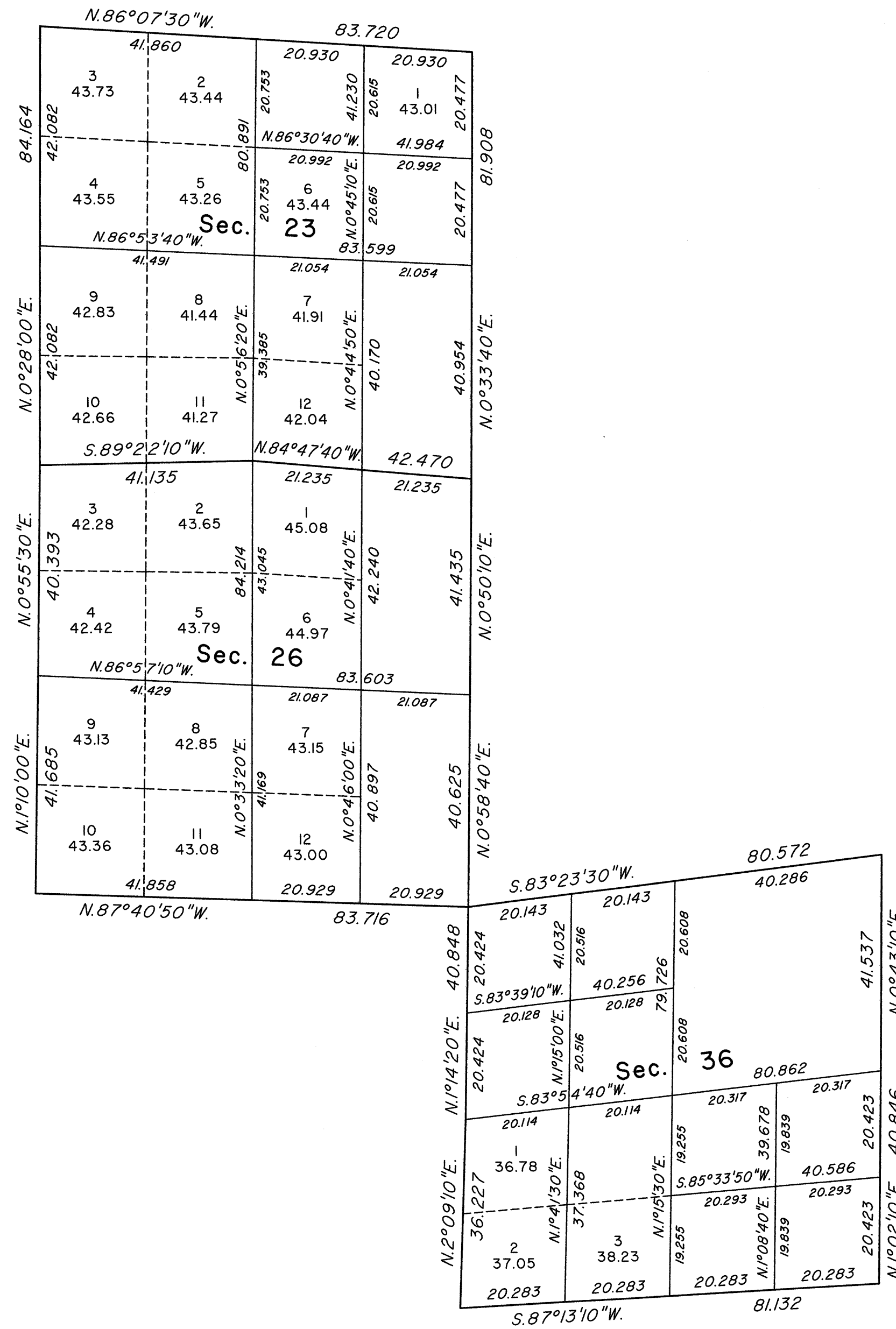
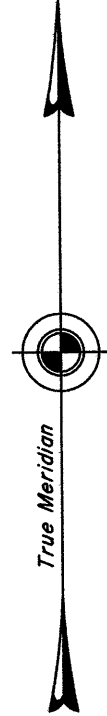


TOWNSHIP 39 NORTH, RANGE 31 EAST, OF THE MOUNT DIABLO MERIDIAN, NEVADA
ENLARGED DIAGRAM

OFFICIALLY FILED
NEVADA STATE OFFICE
at 10:00 AM on AUG 09 2013



Reference should be made to Sheet No. 1 for survey information.

UNITED STATES DEPARTMENT OF THE INTERIOR
BUREAU OF LAND MANAGEMENT

Reno, Nevada June 25, 2013

This plat is strictly conformable to the approved field notes, and the survey, having been correctly executed in accordance with the requirements of law and the regulations of this Bureau, is hereby accepted.

For the Director

Chief Cadastral Surveyor, Nevada

