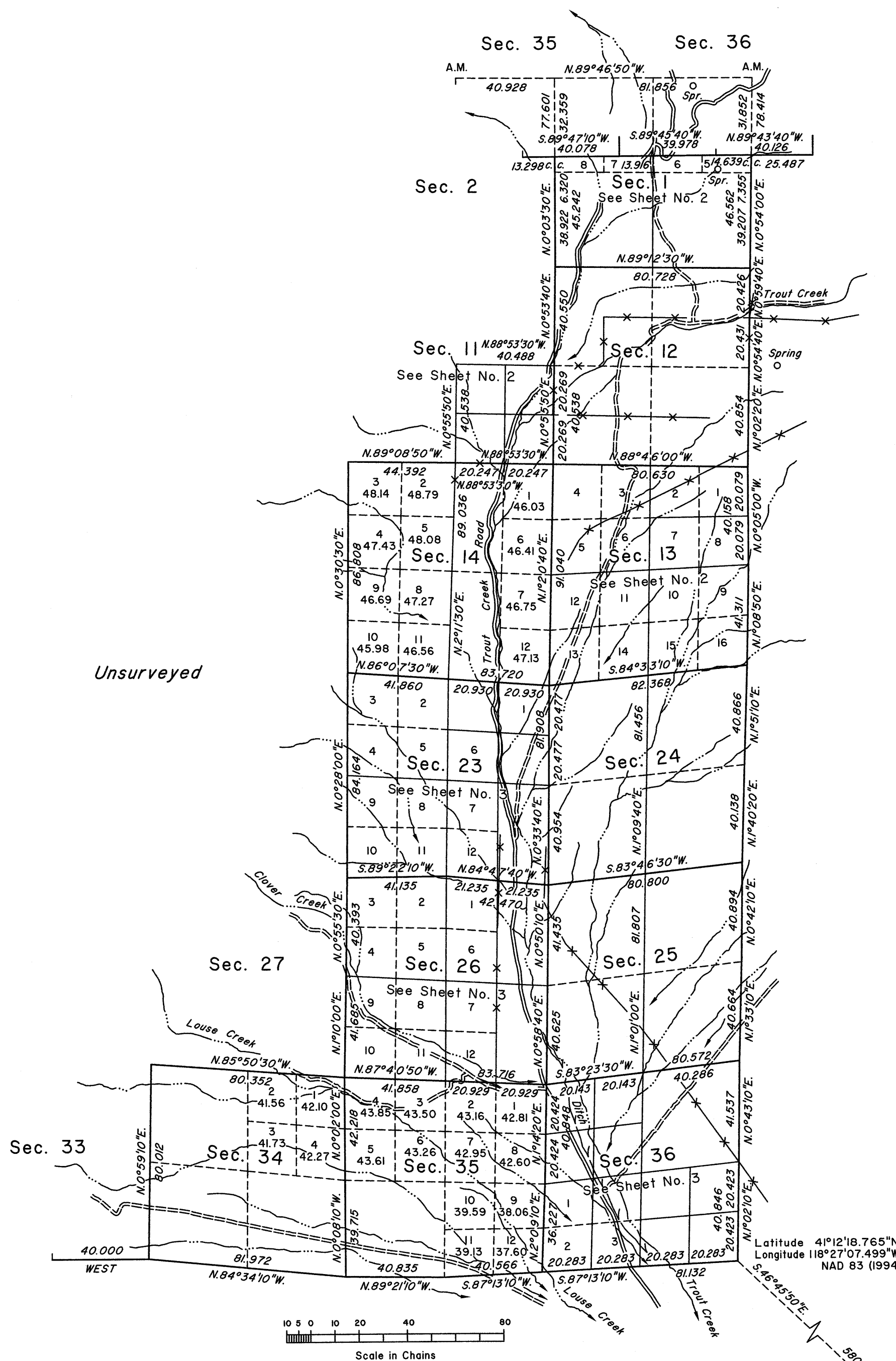


TOWNSHIP 39 NORTH, RANGE 31 EAST, OF THE MOUNT DIABLO MERIDIAN, NEVADA

DEPENDENT RESURVEY AND SUBDIVISION

OFFICIALLY FILED
NEVADA STATE OFFICE
at 10:00 AM on **AUG 09 2013**



A history of surveys is contained in the field notes.

A dependent resurvey of a portion of the south boundary was executed concurrently under Group No. 802, Nevada.

This plat, in three sheets, represents the dependent resurvey of a portion of the south boundary of Township 40 North, Range 31 East; and the dependent resurvey of the east boundary, a portion of the north boundary and a portion of the subdivisional lines designed to restore the corners in their true original locations according to the best available evidence, and the subdivision of certain sections, Township 39 North, Range 31 East, Mount Diablo Meridian, Nevada.


Except as indicated hereon, the lottings and areas are as shown on the plat approved December 23, 1874.

Survey executed by Dan R. Aschenbach, Cadastral Surveyor, beginning July 24, 2002, and completed August 26, 2004, pursuant to Special Instructions dated July 17, 2002, and Supplemental Special Instructions dated November 12, 2002, for Group No. 807, Nevada.

UNITED STATES DEPARTMENT OF THE INTERIOR
BUREAU OF LAND MANAGEMENT

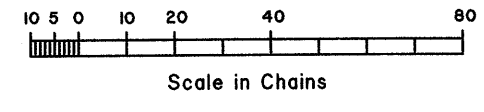
Reno, Nevada June 25, 2013

This plat is strictly conformable to the approved field notes, and the survey, having been correctly executed in accordance with the requirements of law and the regulations of this Bureau, is hereby accepted.

For the Director


Chief Cadastral Surveyor, Nevada

Latitude 41°12'18.765"N
Longitude 118°27'07.499"W
NAD 83 (1994)



"ROBERTS"
N.G.S.