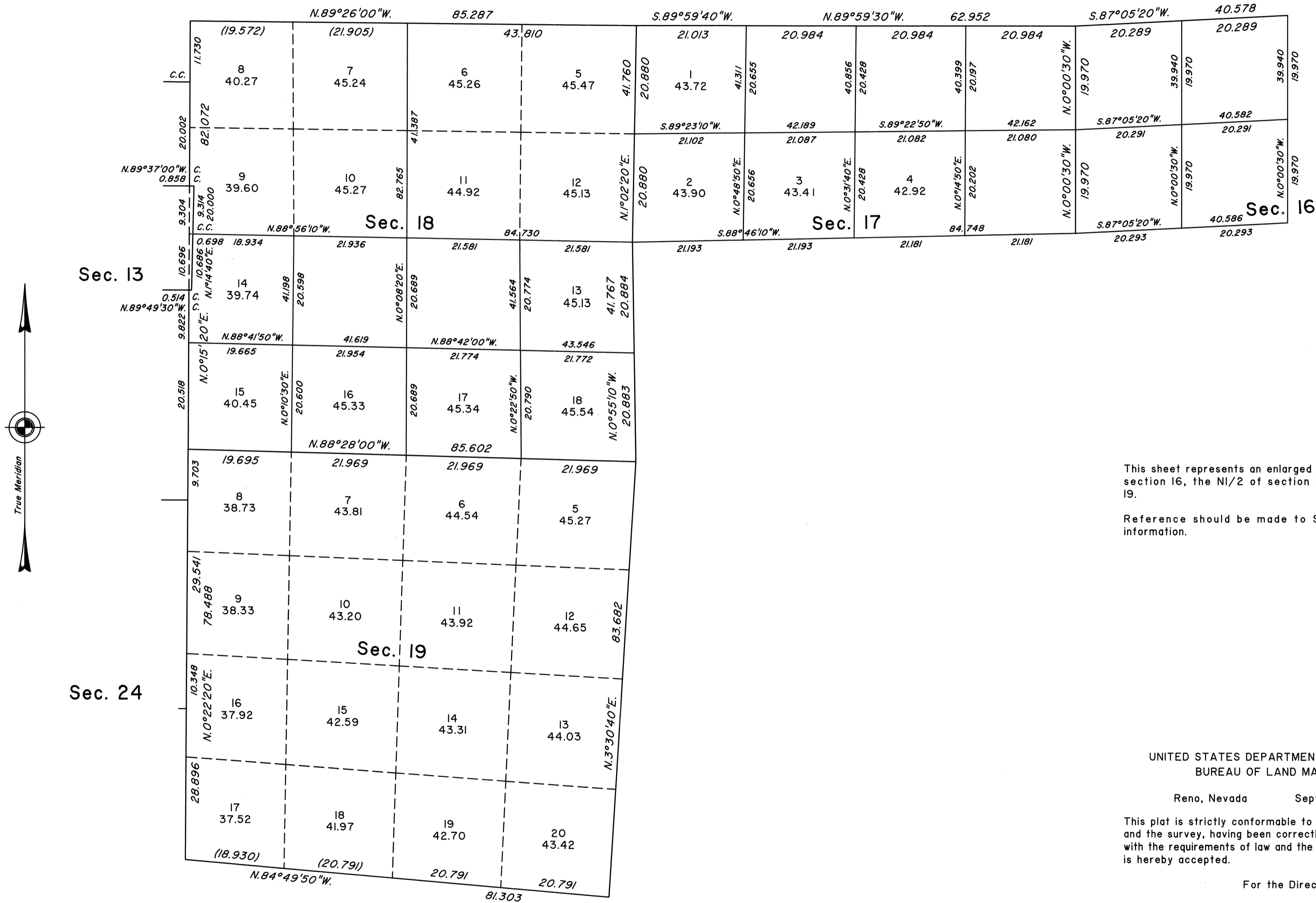


TOWNSHIP 39 NORTH, RANGE 27 EAST, OF THE MOUNT DIABLO MERIDIAN, NEVADA  
ENLARGED DIAGRAM

OFFICIALLY FILED  
NEVADA STATE OFFICE  
at 10:00 AM on September 17, 1998



This sheet represents an enlarged diagram of the NW1/4 of section 16, the N1/2 of section 17, and sections 18 and 19.

Reference should be made to Sheet No. 1 for survey information.

UNITED STATES DEPARTMENT OF THE INTERIOR  
BUREAU OF LAND MANAGEMENT

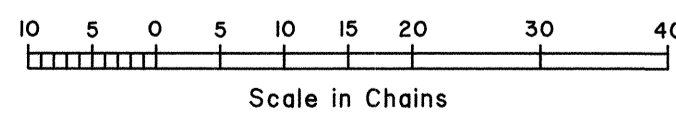
Reno, Nevada September 15, 1998

This plat is strictly conformable to the approved field notes, and the survey, having been correctly executed in accordance with the requirements of law and the regulations of this Bureau, is hereby accepted.

For the Director

*Robert H. Thompson*

Acting Chief Cadastral Surveyor, Nevada



GM