

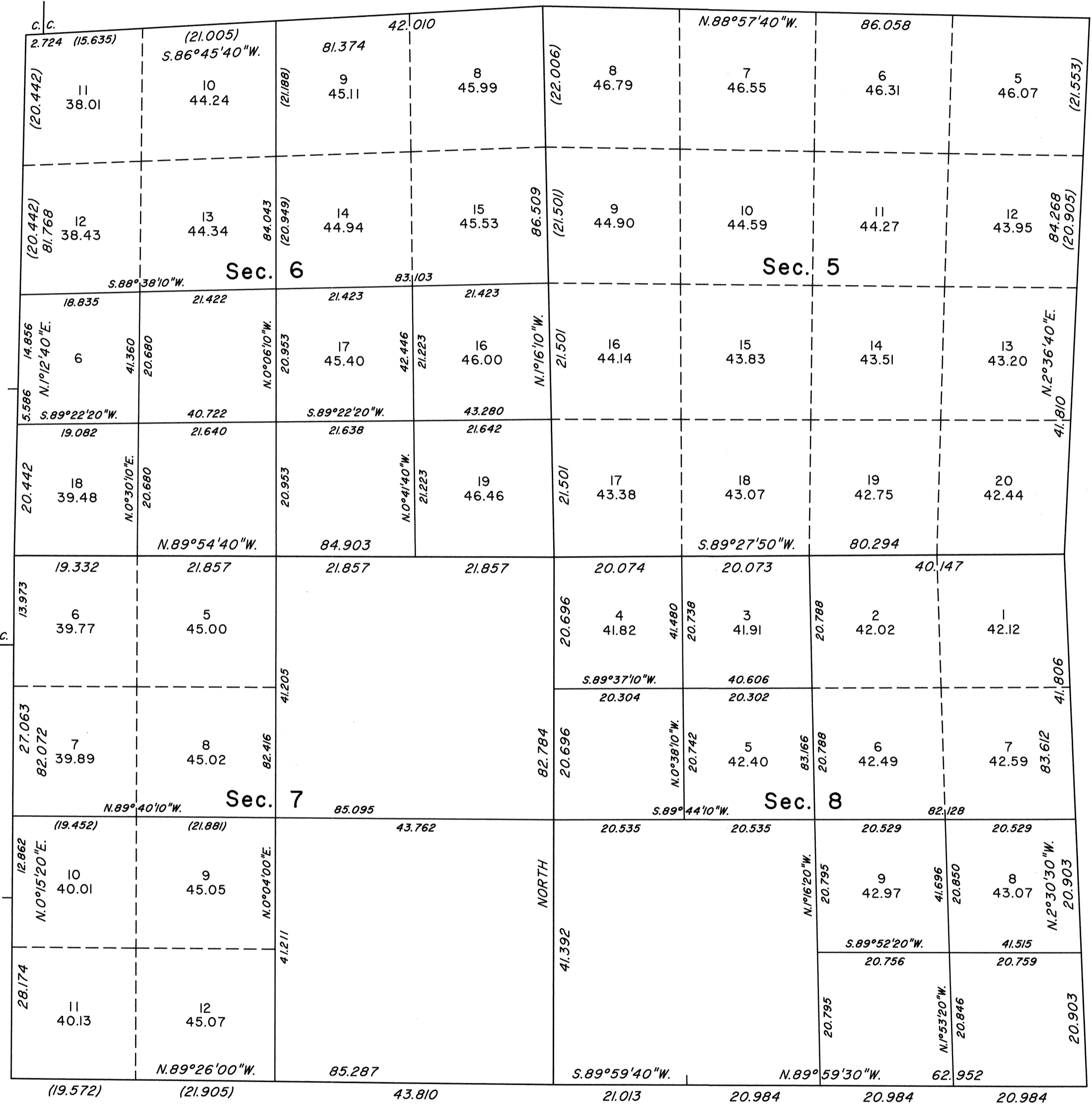
TOWNSHIP 39 NORTH, RANGE 27 EAST, OF THE MOUNT DIABLO MERIDIAN, NEVADA
ENLARGED DIAGRAM

OFFICIALLY FILED
NEVADA STATE OFFICE
at 10:00 AM on September 17, 1998



Sec. 1

Sec. 12



This sheet represents an enlarged diagram of sections 5, 6, 7 and 8.
Reference should be made to Sheet No. 1 for survey information.

UNITED STATES DEPARTMENT OF THE INTERIOR
BUREAU OF LAND MANAGEMENT

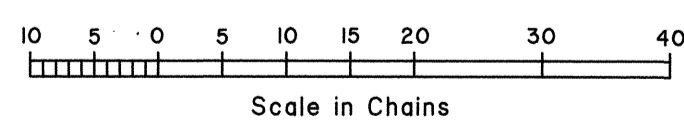
Reno, Nevada September 15, 1998

This plat is strictly conformable to the approved field notes, and the survey, having been correctly executed in accordance with the requirements of law and the regulations of this Bureau, is hereby accepted.

For the Director

Robert H. Thompson

Acting Chief Cadastral Surveyor, Nevada



GM

T.39N., R.27E., M.D.M.