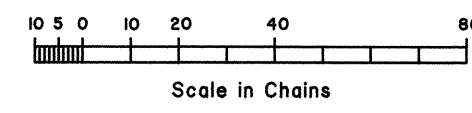
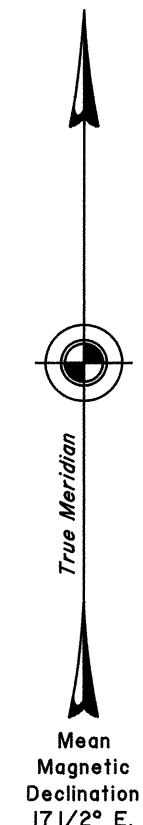
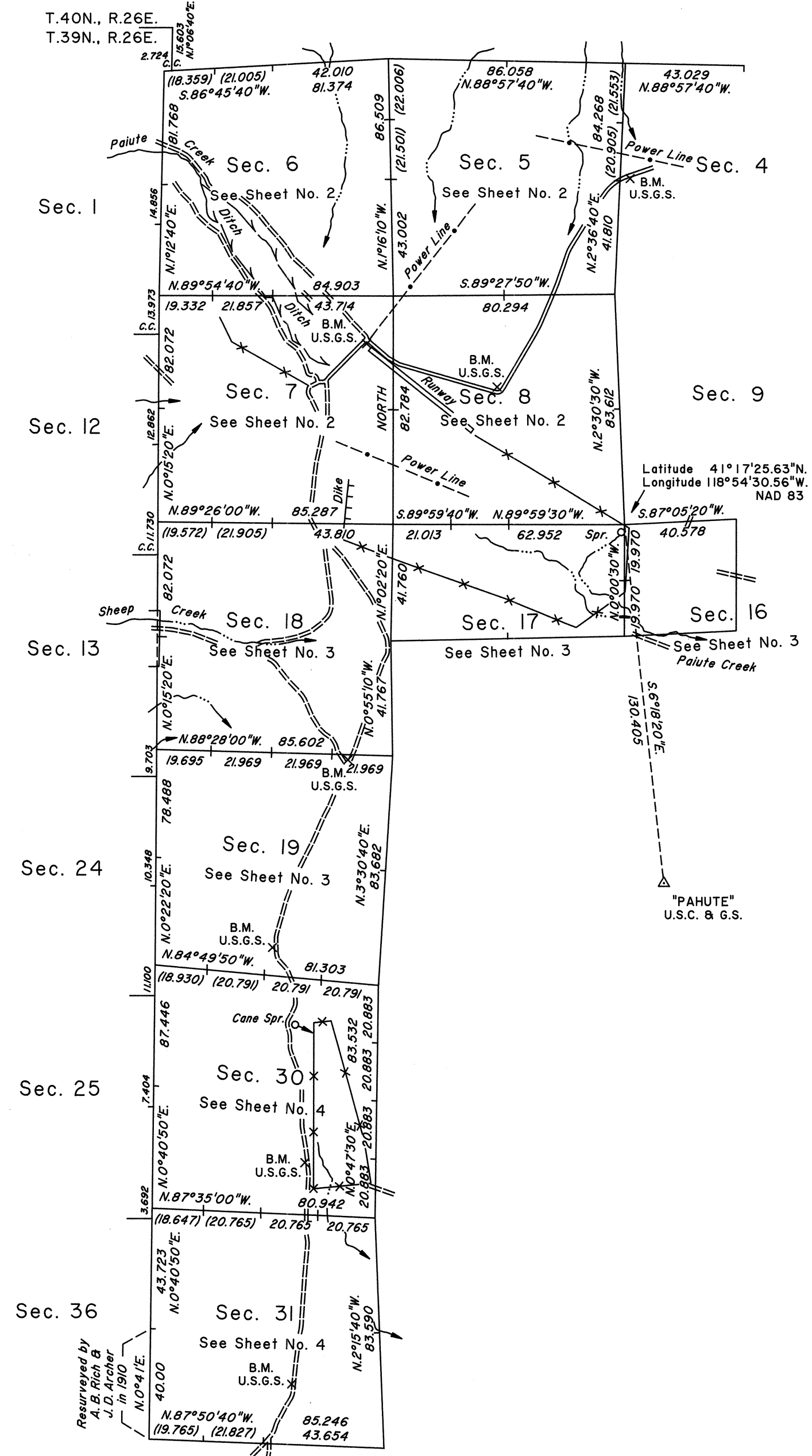


TOWNSHIP 39 NORTH, RANGE 27 EAST, OF THE MOUNT DIABLO MERIDIAN, NEVADA

DEPENDENT RESURVEY AND SUBDIVISIONS



A history of surveys is contained in the field notes.

A portion of the east boundary of Township 39 North, Range 26 East, was dependently resurveyed concurrently under this same Group.

This plat, in four sheets, represents the dependent resurvey of portions of the south, west and north boundaries, and a portion of the subdivisional lines designed to restore the corners in their true original locations according to the best available evidence, and the subdivision of certain sections, Township 39 North, Range 27 East, Mount Diablo Meridian, Nevada.

Except as indicated hereon, the lottings and areas are as shown on the plat approved December 27, 1873.

Survey executed by Ronald E. Williams, Cadastral Surveyor, beginning October 18, 1996, and completed July 8, 1998, pursuant to Special Instructions dated October 17, 1996, Supplemental Special Instructions dated July 30, 1997, and Amended Supplemental Special Instructions dated June 29, 1998, for Group No. 765, Nevada.

For enlargement of sections 5, 6, 7 and 8, see Sheet No. 2; for enlargement of the NW1/4 of section 16, the N1/2 of section 17, and sections 18 and 19, see Sheet No. 3; and for enlargement of sections 30 and 31, see Sheet No. 4.

Unsurveyed

UNITED STATES DEPARTMENT OF THE INTERIOR
BUREAU OF LAND MANAGEMENT

Reno, Nevada September 15, 1998

This plat is strictly conformable to the approved field notes, and the survey, having been correctly executed in accordance with the requirements of law and the regulations of this Bureau, is hereby accepted.

For the Director

Robert H. Thompson

Acting Chief Cadastral Surveyor, Nevada

OFFICIALLY FILED
NEVADA STATE OFFICE
at 10:00 AM on September 17, 1998