

TOWNSHIP 39 NORTH, RANGE 26 EAST, OF THE MOUNT DIABLO MERIDIAN, NEVADA

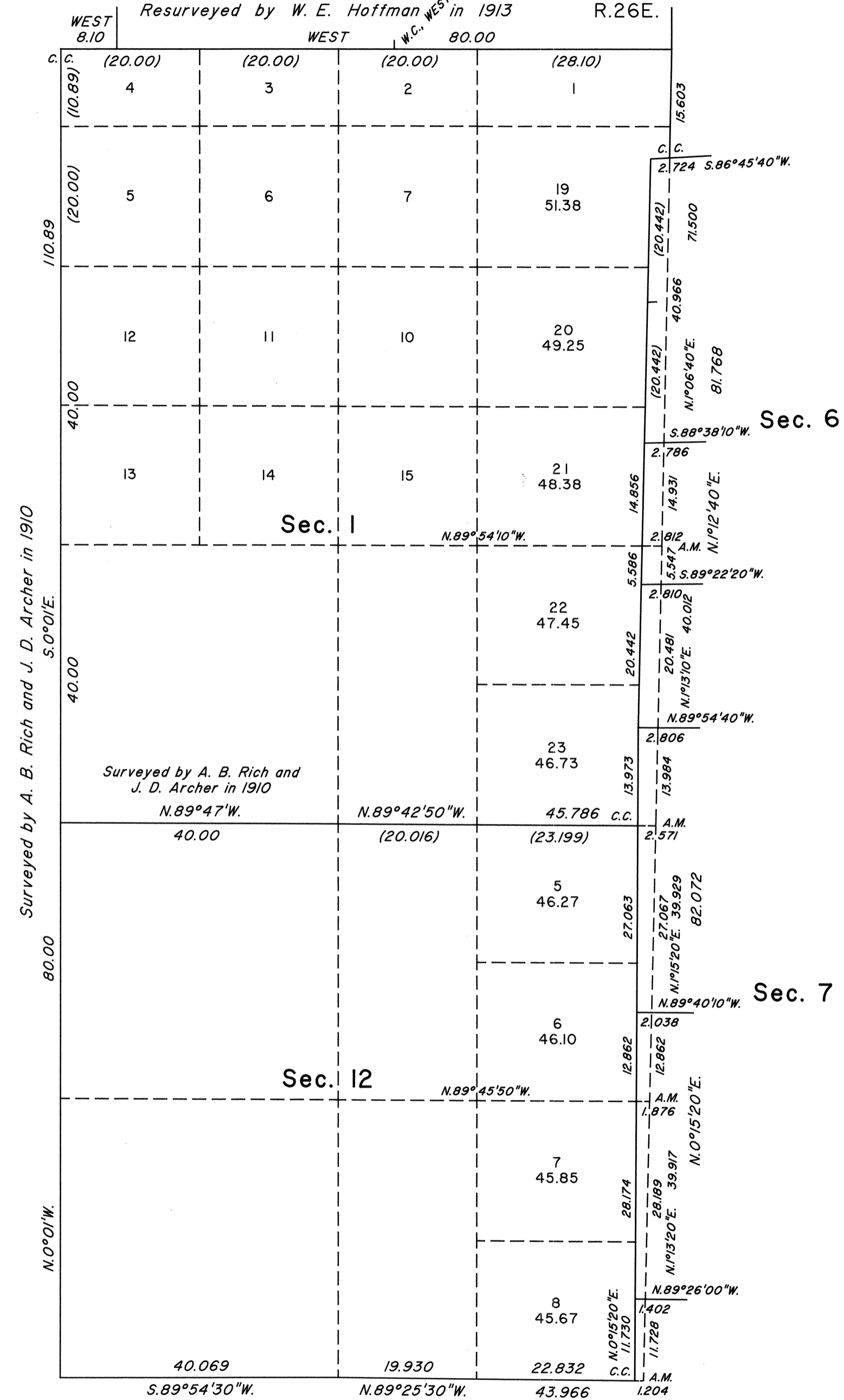
ENLARGED DIAGRAMS

Sec. 35

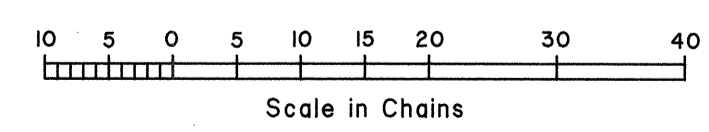
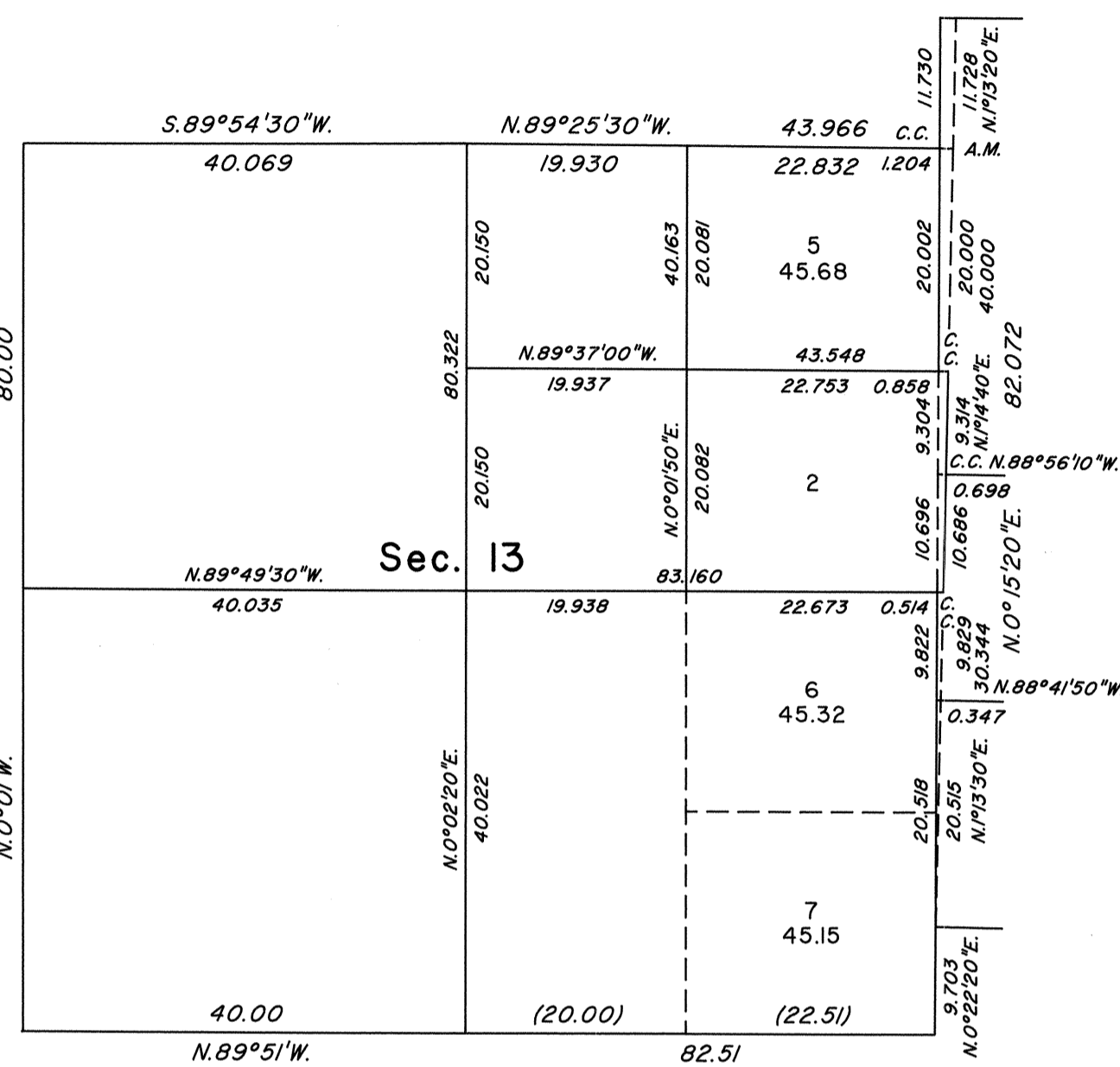
Sec. 36

T.40N.
R.26E.

Resurveyed by W. E. Hoffman in 1913



Surveyed by A. B. Rich and J. D. Archer in 1910



This sheet represents enlarged diagrams of sections 1, 12 and 13.
Reference should be made to Sheet No. 1 for survey information.

UNITED STATES DEPARTMENT OF THE INTERIOR
BUREAU OF LAND MANAGEMENT

Reno, Nevada September 15, 1998

This plat is strictly conformable to the approved field notes, and the survey, having been correctly executed in accordance with the requirements of law and the regulations of this Bureau, is hereby accepted.

For the Director

Robert H. Thompson

Acting Chief Cadastral Surveyor, Nevada

OFFICIALLY FILED
NEVADA STATE OFFICE
at 10:00 AM on September 17, 1998