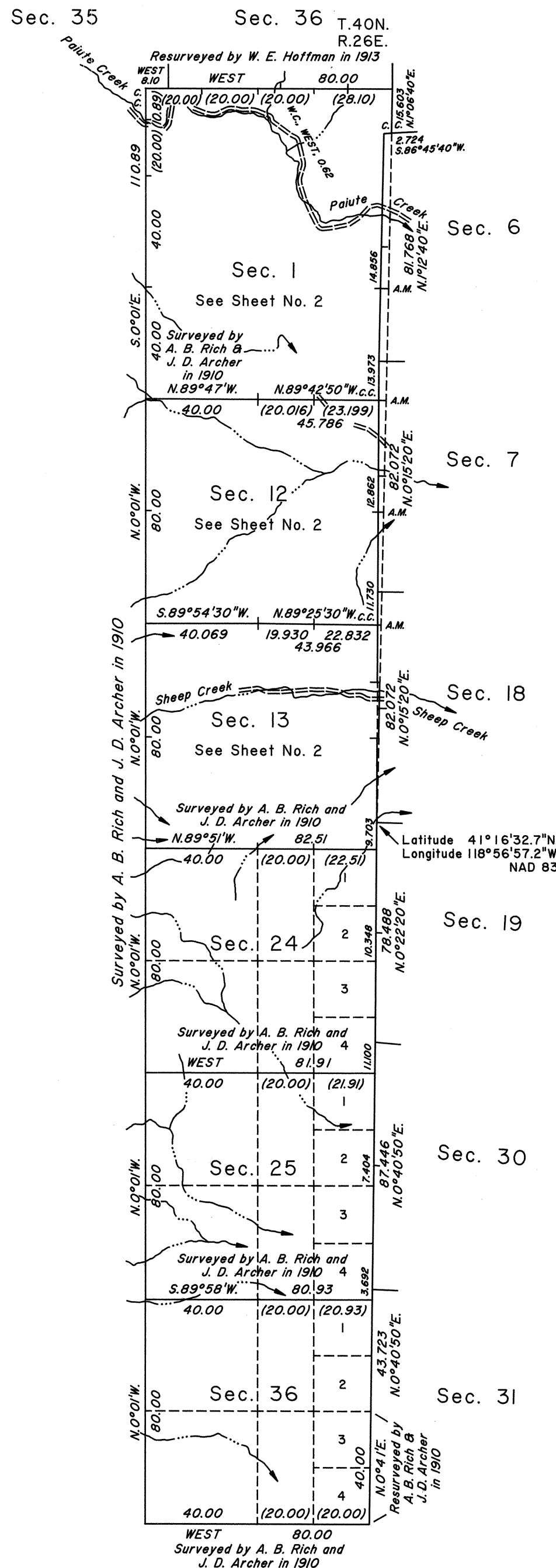
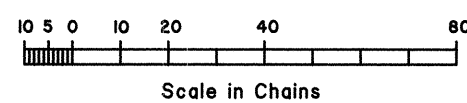
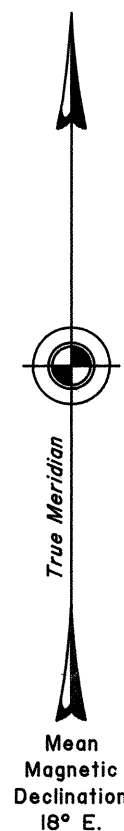


TOWNSHIP 39 NORTH, RANGE 26 EAST, OF THE MOUNT DIABLO MERIDIAN, NEVADA

DEPENDENT RESURVEY AND SUBDIVISION



Surveyed by
A. B. Rich and J. D. Archer
 in 1910



A history of surveys is contained in the field notes.

A portion of the west boundary of Township 39 North, Range 27 East, was dependently resurveyed concurrently under this same Group.

This plat, in two sheets, represents the dependent resurvey of a portion of the east boundary and a portion of the subdivisional lines designed to restore the corners in their true original locations according to the best available evidence, and the subdivision of section 13, Township 39 North, Range 26 East, Mount Diablo Meridian, Nevada.

Except as indicated hereon, the lottings and areas are as shown on the plat approved June 26, 1912.

Survey executed by Ronald E. Williams, Cadastral Surveyor, beginning July 31, 1997, and completed July 8, 1998, pursuant to Special Instructions dated October 17, 1996, Supplemental Special Instructions dated July 30, 1997, and Amended Supplemental Special Instructions dated June 29, 1998, for Group No. 765, Nevada.

For enlargements of sections 1, 12, and 13, see Sheet No. 2.

UNITED STATES DEPARTMENT OF THE INTERIOR
BUREAU OF LAND MANAGEMENT

Reno, Nevada September 15, 1998

This plat is strictly conformable to the approved field notes, and the survey, having been correctly executed in accordance with the requirements of law and the regulations of this Bureau, is hereby accepted.

For the Director

Robert H. Thompson

Acting Chief Cadastral Surveyor, Nevada

OFFICIALLY FILED
NEVADA STATE OFFICE
at 10:00 AM on September 17, 1998