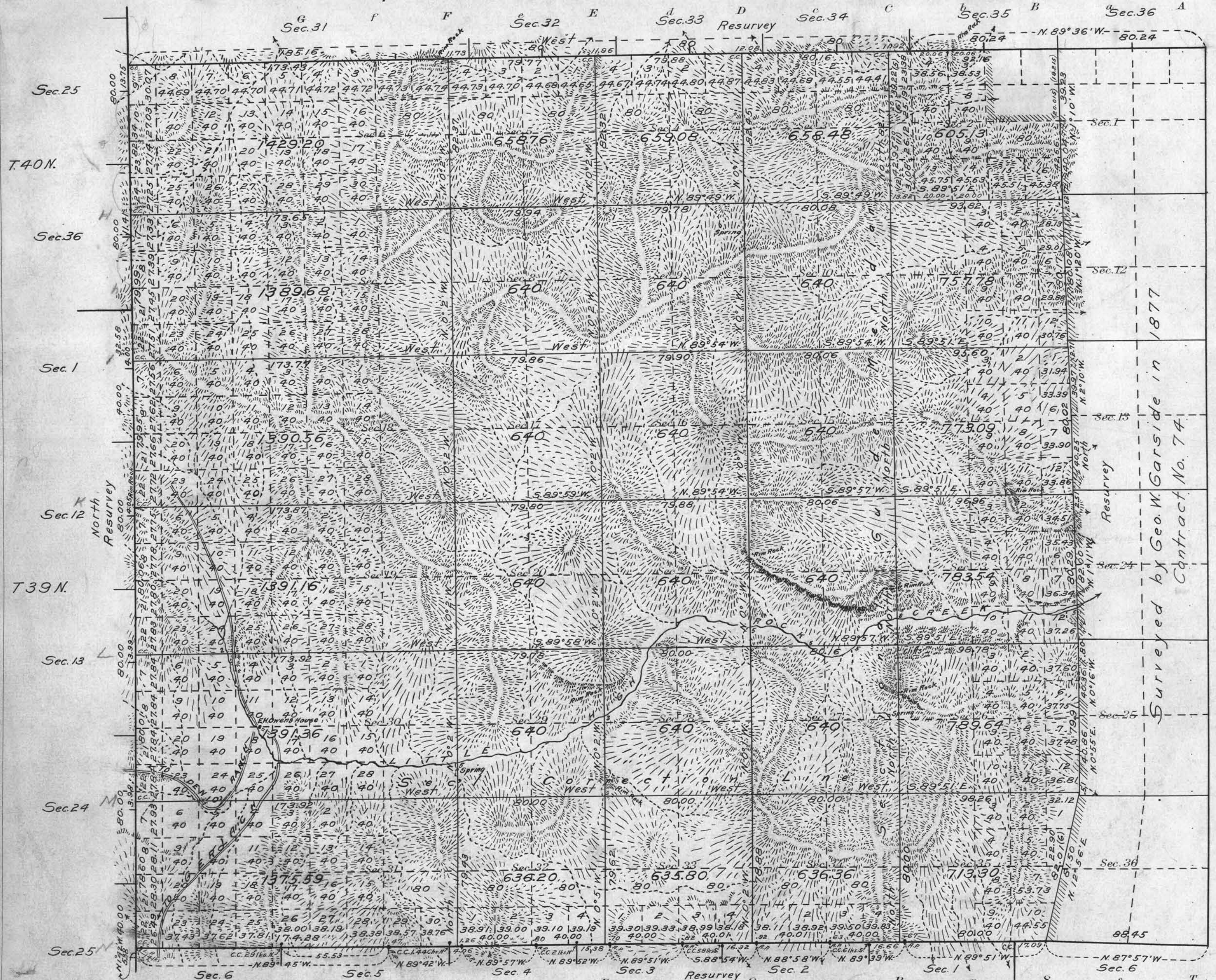


Township No. 39 North, Range No. 23 East, Mt. Diablo Meridian, Nevada



Surveyed by Geo. W. Garside in 1877
Contract No. 74

Areas in Acres	
Public Land	24,354.71
Indian Reservation	
Indian Allotments	
Mineral Claims	
Water Surface	
Total Area	24,354.71

Latitude 41°14'N.
 Longitude 119°20'W.
 Scale 40 Chains to an inch
 Mean Magnetic Declination

Surveys Designated	By Whom Surveyed	Group	Amount of Surveys			When Surveyed			
			No.	Date of instructions	Mls.	chs.	fcs.	Begun	Completed
North Bdy.-Resur.	W.E. Hoffman	31	Sep. 16, 1914	7	25	64			
South "	"	"	"	"	7	22	75		
West "	"	"	"	"	6	0	95	Oct. 26, 1914	Dec. 5, 1914
Subdivisions,	"	"	"	"	6	4	29		
Subdivisions	"	"	"	"	55	79	9		

The above map of Township No. 39 N., Range No. 23 E. of the Mt. Diablo Meridian Nevada is strictly conformable to the field notes of the survey thereof on file in this office, which have been examined and approved

U. S. Surveyor General's Office.
 Reno, Nevada, April 14, 1917

John B. Sullivan
 Surveyor General.