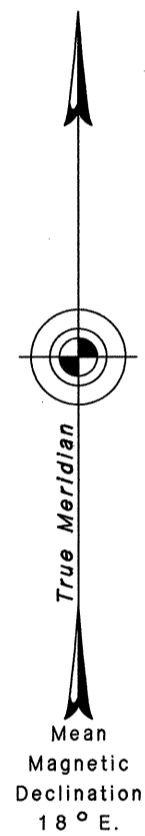


ORIGINAL

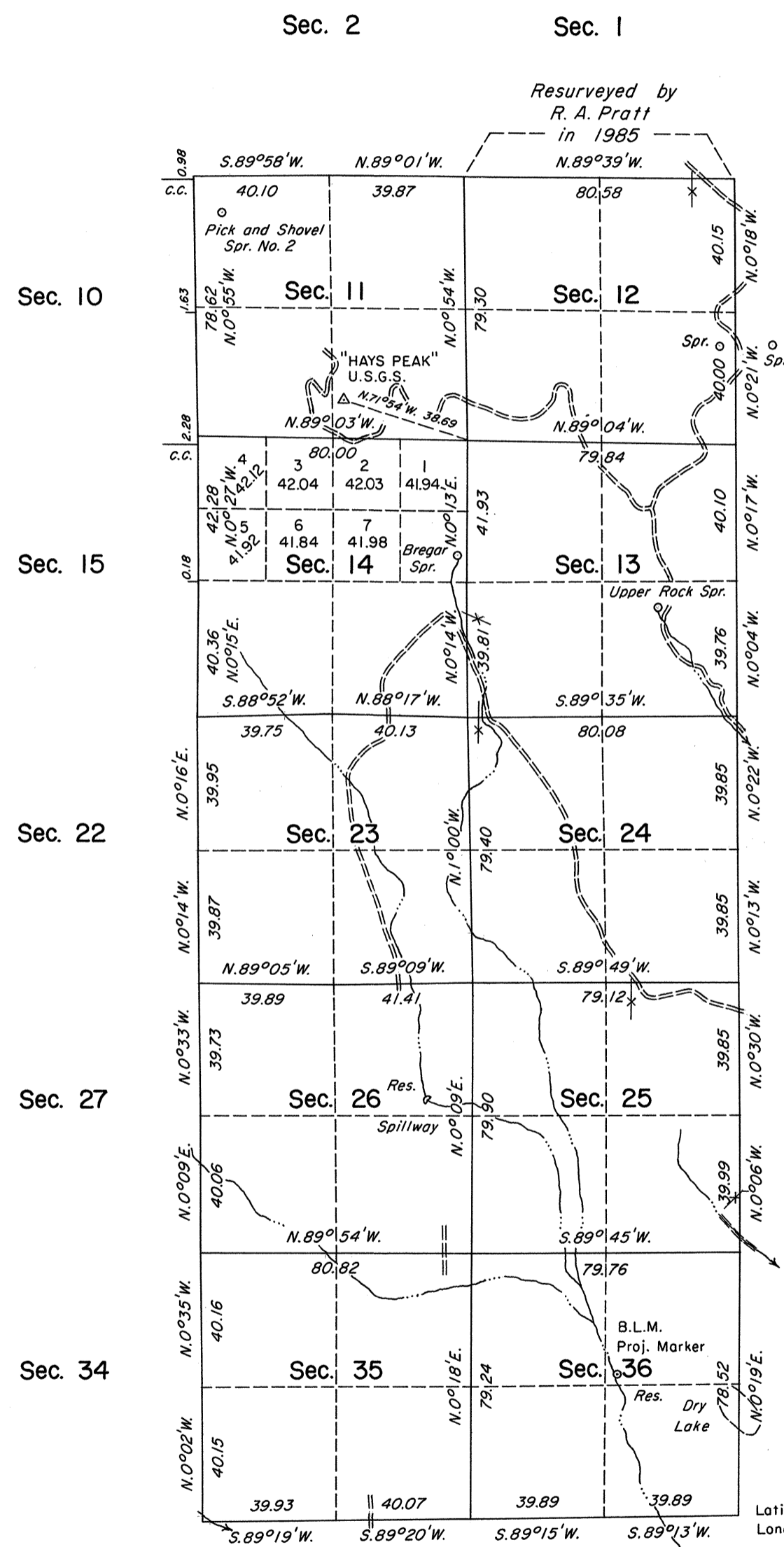
TOWNSHIP 39 NORTH, RANGE 18 EAST, OF THE MOUNT DIABLO MERIDIAN, NEVADA
DEPENDENT RESURVEY



Surveyed by

J. D. Archer

in 1911



History of the earlier surveys is contained in the field notes.

A dependent resurvey of a portion of the east boundary was executed concurrently under T. 39 N., R. 19 E., of this same Group.

This plat represents a dependent resurvey of a portion of the south boundary and a portion of the subdivisional lines of T. 39 N., R. 18 E., designed to restore the corners in their true original locations according to the best available evidence.

Lottings and areas, except as shown hereon, are as shown on the plat approved November 30, 1880.

Survey executed by Robert A. Pratt, Cadastral Surveyor, beginning August 11, 1986 and completed September 5, 1986, under Special Instructions dated November 1, 1985 and the Supplemental Special Instructions dated August 1, 1986, for Group No. 629, Nevada.

UNITED STATES DEPARTMENT OF THE INTERIOR
BUREAU OF LAND MANAGEMENT

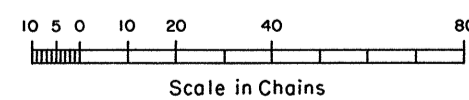
Reno, Nevada June 4, 1987

This plat is strictly conformable to the approved field notes, and the survey, having been correctly executed in accordance with the requirements of law and the regulations of this Bureau, is hereby accepted.

For the Director

Lacl E. Bland

Chief Cadastral Surveyor



CU 8/10/87

Lab