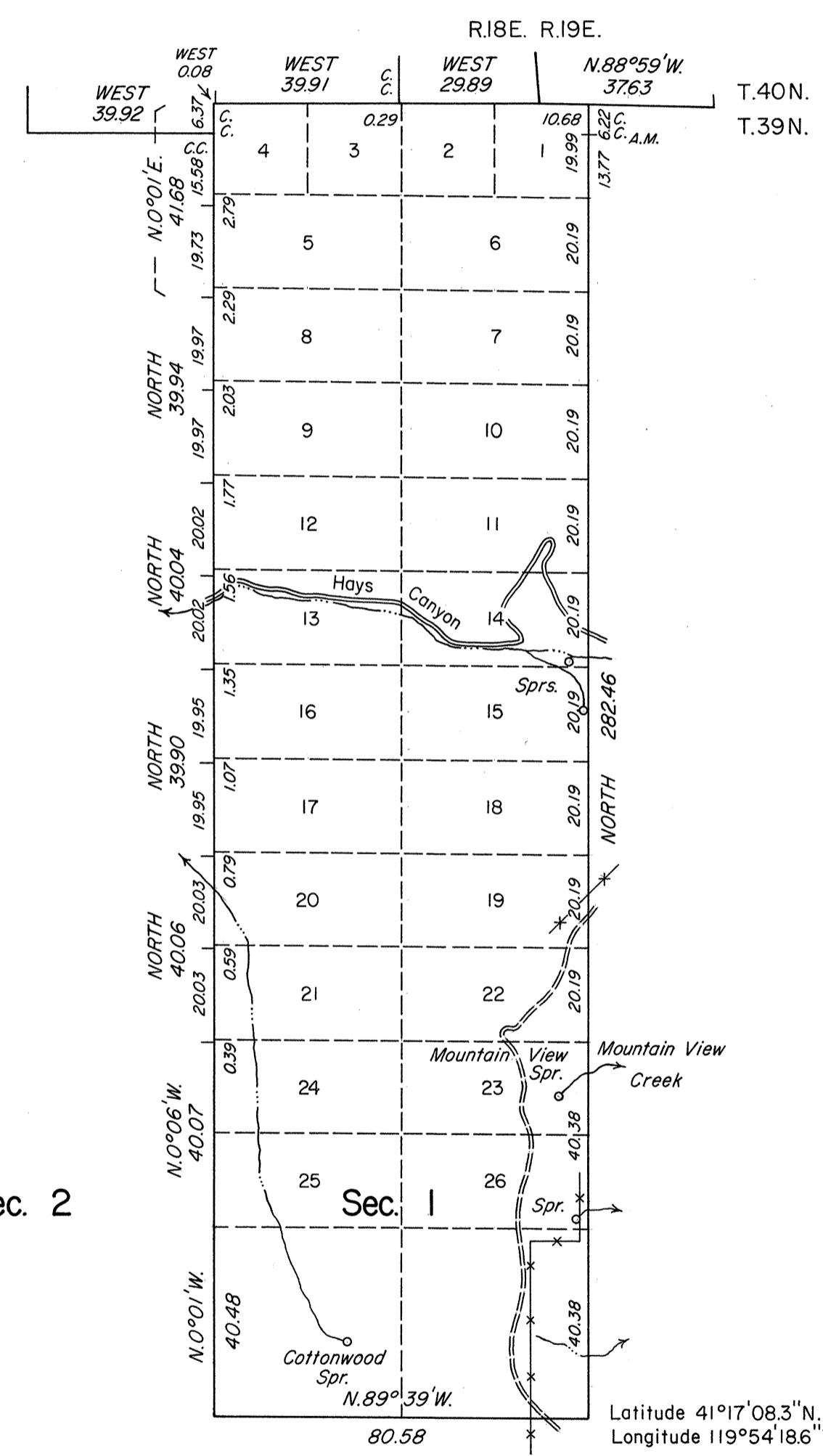
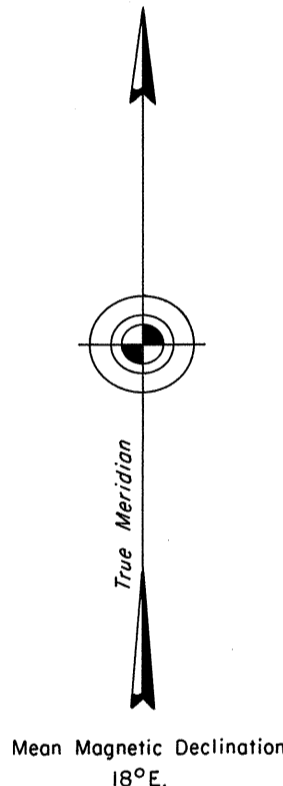


TOWNSHIP 39 NORTH, RANGE 18 EAST, OF THE MOUNT DIABLO MERIDIAN, NEVADA
 DEPENDENT RESURVEY

Sec. 35 Sec. 36 Sec. 31



Surveyed by
James D. Archer
 in 1911



History of the earlier surveys is contained in the field notes.

A dependent resurvey of the south boundary of T. 40 N., R. 19 E. and a portion of the south boundary of T. 40 N., R. 18 E., was executed concurrently under this same Group.

This plat represents a dependent resurvey of a portion of the east boundary and a portion of the subdivisional lines of T. 39 N., R. 18 E., designed to restore the corners in their original locations according to the best available evidence.

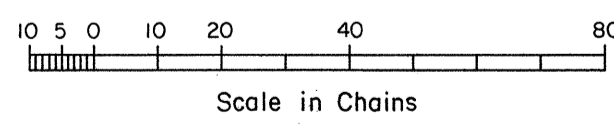
Areas and lottings, are as shown on the plat approved November 30, 1880.

Survey executed by Robert A. Pratt, Cadastral Surveyor, beginning October 3, 1985 and completed November 1, 1985, under Special Instructions dated August 23, 1984 and Supplemental Special Instructions dated October 2, 1985 for Group No. 616, Nevada.

UNITED STATES DEPARTMENT OF THE INTERIOR
 BUREAU OF LAND MANAGEMENT
 Reno, Nevada February 10, 1987

This plat is strictly conformable to the approved field notes, and the survey, having been correctly executed in accordance with the requirements of law and the regulations of this Bureau, is hereby accepted.

For the Director
Lavel E. Bland
 Chief Cadastral Surveyor



Latitude 41°17'08.3"N.
 Longitude 119°54'18.6"W.