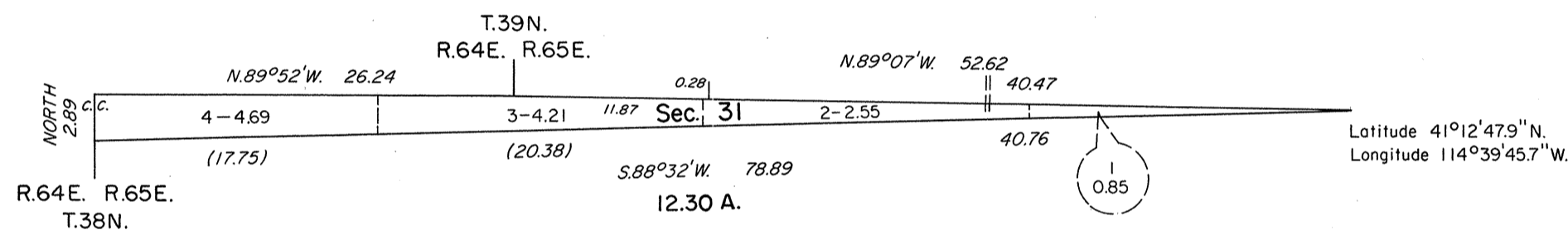


ORIGINAL

OFFICIALLY FILED  
NEVADA STATE OFFICE  
10:00 a.m., December 4, 1981

TOWNSHIP 38 1/2 NORTH, RANGE 65 EAST, OF THE MOUNT DIABLO MERIDIAN, NEVADA  
DEPENDENT RESURVEY AND SURVEY

Sec. 31



A history of surveys is contained in the field notes.

A dependent resurvey of the north boundary and the survey of the west boundary was executed concurrently under T. 39 N., R. 65 E. and T. 38 1/2 N., R. 64 E., respectively, of this group.

This plat represents a dependent resurvey of the south boundary of T. 38 1/2 N., R. 65 E. designed to restore the corners in their true original locations according to the best available evidence, and the identification of section 31, T. 38 1/2 N., R. 65 E., Mount Diablo Meridian, Nevada.

Survey executed by Ronald K. Baugh, Cadastral Surveyor, beginning June 5, 1978, and completed September 22, 1978, pursuant to Special Instructions dated May 15, 1978, and Supplemental Special Instructions dated September 1, 1978, for Group No. 563, Nevada.

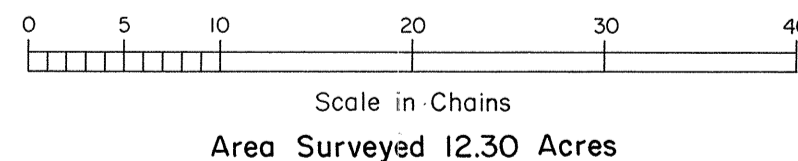
UNITED STATES DEPARTMENT OF THE INTERIOR  
BUREAU OF LAND MANAGEMENT  
Denver, Colorado August 13, 1981

This plat is strictly conformable to the approved field notes, and the survey, having been correctly executed in accordance with the requirements of law and the regulations of this Bureau, is hereby accepted.

For the Director

*Mary S. Speight*

Acting Chief, Cadastral Survey  
Examination and Approval Staff



Mean Magnetic Declination  
17 1/2° E.