

OFFICIALLY FILED  
NEVADA STATE OFFICE  
10:00 A.M., December 4, 1981

# TOWNSHIP 38 1/2 NORTH, RANGE 64 EAST, OF THE MOUNT DIABLO MERIDIAN, NEVADA

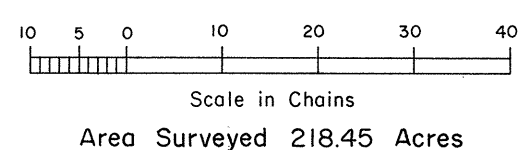
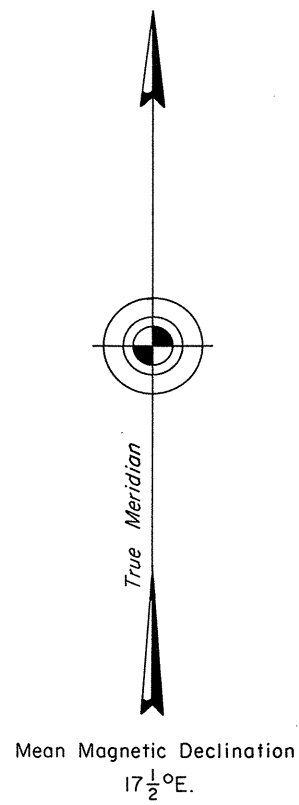
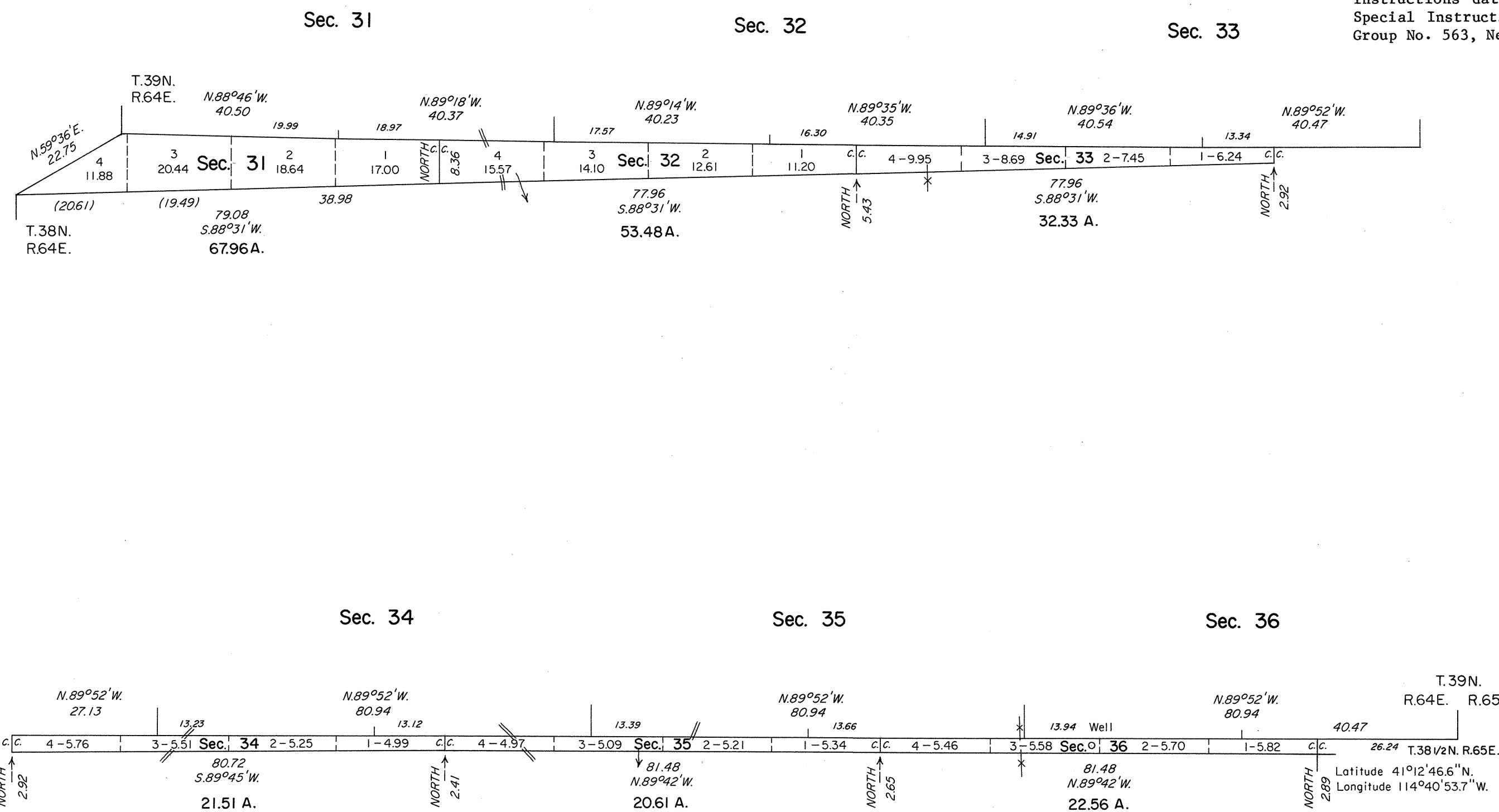
## DEPENDENT RESURVEY AND SURVEY

A history of surveys is contained in the field notes.

A dependent resurvey of the south boundary was executed concurrently under T. 38 N., R. 64 E., of this same group.

This plat represents a dependent resurvey of the south boundary of T. 39 N., R. 64 E., designed to restore the corners in their true original locations according to the best available evidence, and the survey of the east and west boundaries and the subdivisional lines of T. 38 1/2 N., R. 64 E., Mount Diablo Meridian, Nevada.

Survey executed by Ronald K. Baugh, Cadastral Surveyor, beginning June 5, 1978, and completed September 29, 1978, pursuant to Special Instructions dated May 15, 1978, and Supplemental Special Instructions dated September 1, 1978, for Group No. 563, Nevada.



T.39N. R.64E. R.65E.  
T.38N. R.64E. R.65E.  
Latitude 41°12'46.6"N.  
Longitude 114°40'53.7"W.

UNITED STATES DEPARTMENT OF THE INTERIOR  
BUREAU OF LAND MANAGEMENT  
Denver, Colorado August 13, 1981

This plat is strictly conformable to the approved field notes, and the survey, having been correctly executed in accordance with the requirements of law and the regulations of this Bureau, is hereby accepted.

For the Director

*Mary S. Spaight*

Acting Chief, Cadastral Survey  
Examination and Approval Staff