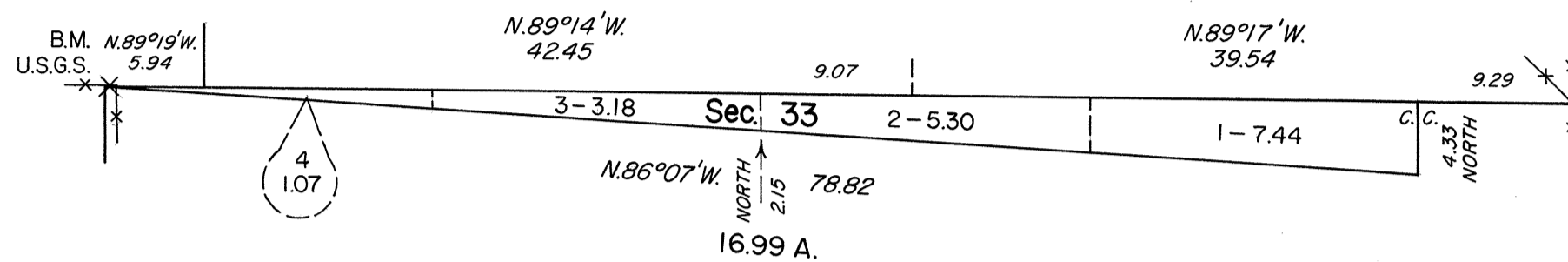


TOWNSHIP 38 1/2 NORTH, RANGE 62 EAST, OF THE MOUNT DIABLO MERIDIAN, NEVADA
DEPENDENT RESURVEY AND SURVEY

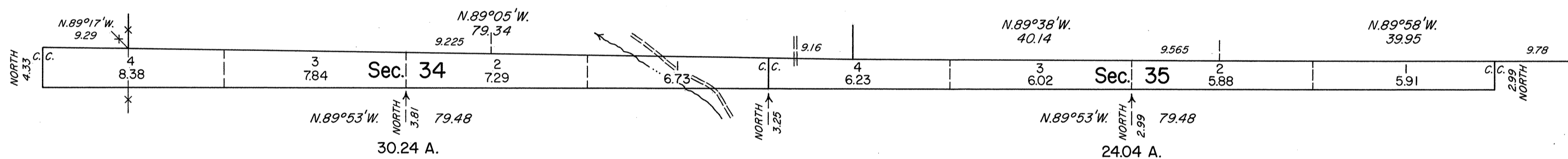
OFFICIALLY FILED
NEVADA STATE OFFICE
10:00 A.M. MARCH 15, 1985

Sec. 33

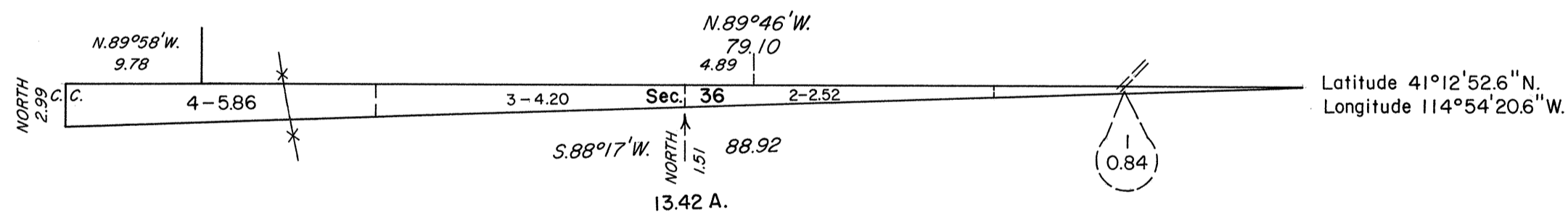


Sec. 34

Sec. 35



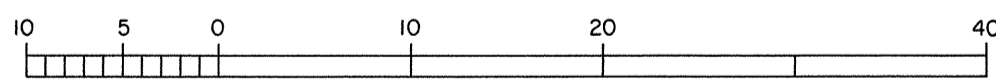
Sec. 36



Latitude 41°12'52.6"N.
Longitude 114°54'20.6"W.



Mean Magnetic Declination
17 1/2°E.



Scale in Chains
Area Surveyed 84.69 Acres

History of the earlier surveys is contained in the field notes.

A dependent resurvey of the north boundary of T. 38 N., R. 62 E., was executed concurrently under this same Group.

This plat represents a dependent resurvey of a portion of the south boundary of T. 39 N., R. 62 E., designed to restore the corners in their true original locations according to the best available evidence and the survey of the subdivisional lines of T. 38 1/2 N., R. 62 E.

Survey executed by Robert A. Pratt, Cadastral Surveyor, beginning July 12, 1983, to July 18, 1983, under Special Instructions dated April 8, 1983 and Supplemental Special Instructions dated July 8, 1983, for Group No. 605, Nevada.

UNITED STATES DEPARTMENT OF THE INTERIOR
BUREAU OF LAND MANAGEMENT

Reno, Nevada December 19, 1984

This plat is strictly conformable to the approved field notes, and the survey, having been correctly executed in accordance with the requirements of law and the regulations of this Bureau, is hereby accepted.

For the Director

Lacel E. Bland

Chief Cadastral Surveyor