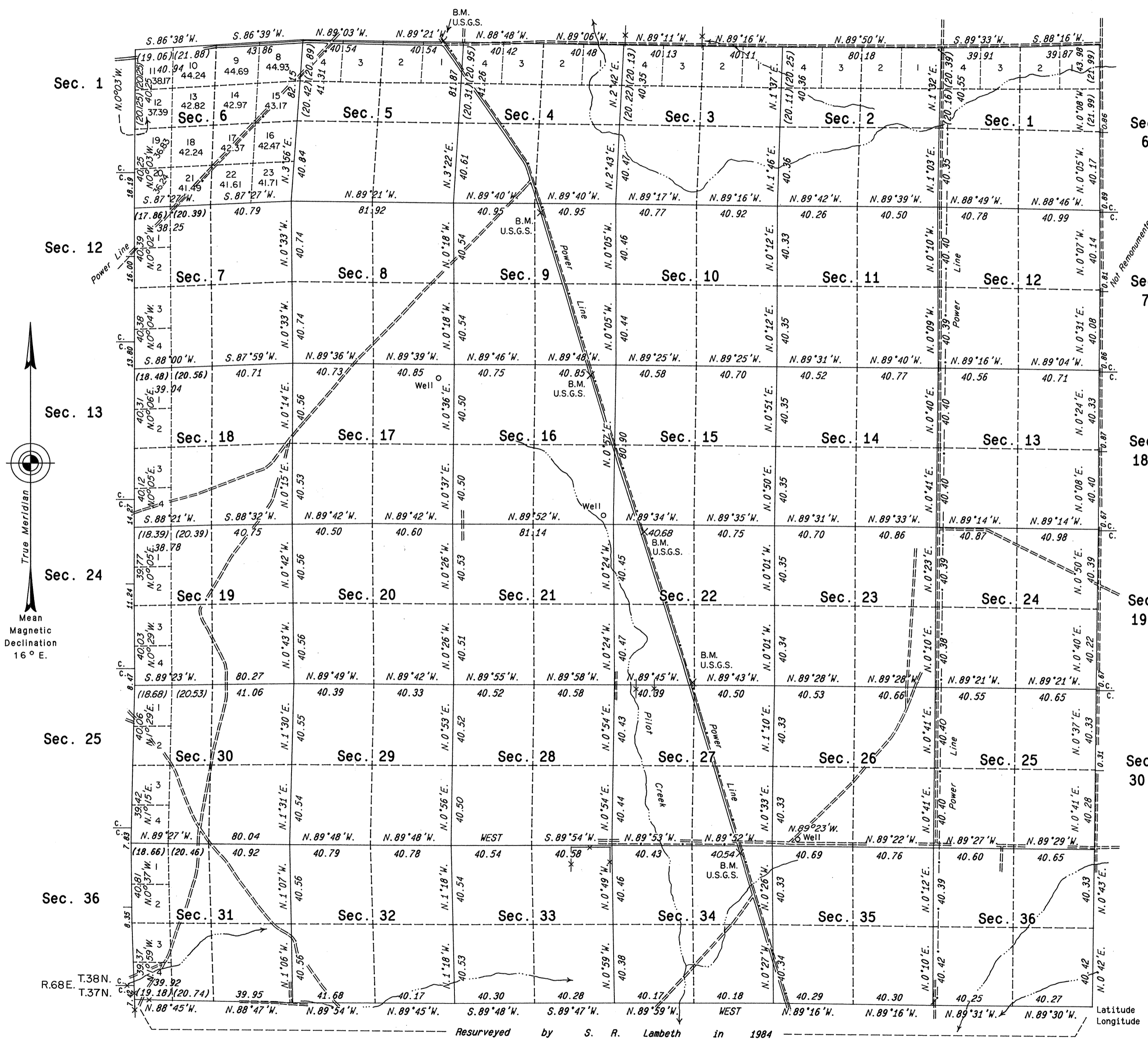


ORIGINAL

# TOWNSHIP 38 NORTH, RANGE 69 EAST, OF THE MOUNT DIABLO MERIDIAN, NEVADA

## DEPENDENT RESURVEY



Sec. 6

Sec. 7

Sec. 18

Sec. 19

Sec. 30

History of the earlier surveys is contained in the field notes.

This plat represents the dependent resurvey of the east, west and north boundaries and the subdivisional lines of T. 38 N., R. 69 E., designed to restore the corners in their original locations according to the best available evidence.

Lottings and areas, except as shown hereon, are as shown on the plat approved July 16, 1881.

Survey executed by Ronald E. Williams, Cadastral Surveyor, beginning June 9, 1886 and completed August 14, 1886, under Special Instructions dated May 21, 1886, for Group No. 636, Nevada.

UNITED STATES DEPARTMENT OF THE INTERIOR  
BUREAU OF LAND MANAGEMENT

Reno, Nevada April 13, 1988

This plat is strictly conformable to the approved field notes, and the survey, having been correctly executed in accordance with the requirements of law and the regulations of this Bureau, is hereby accepted.

For the Director

*Lavel E. Bland*

Chief Cadastral Surveyor

Latitude 41°07'28.9"N.  
Longitude 114°06'03.9"W.

Resurveyed by S. R. Lambeth in 1984

