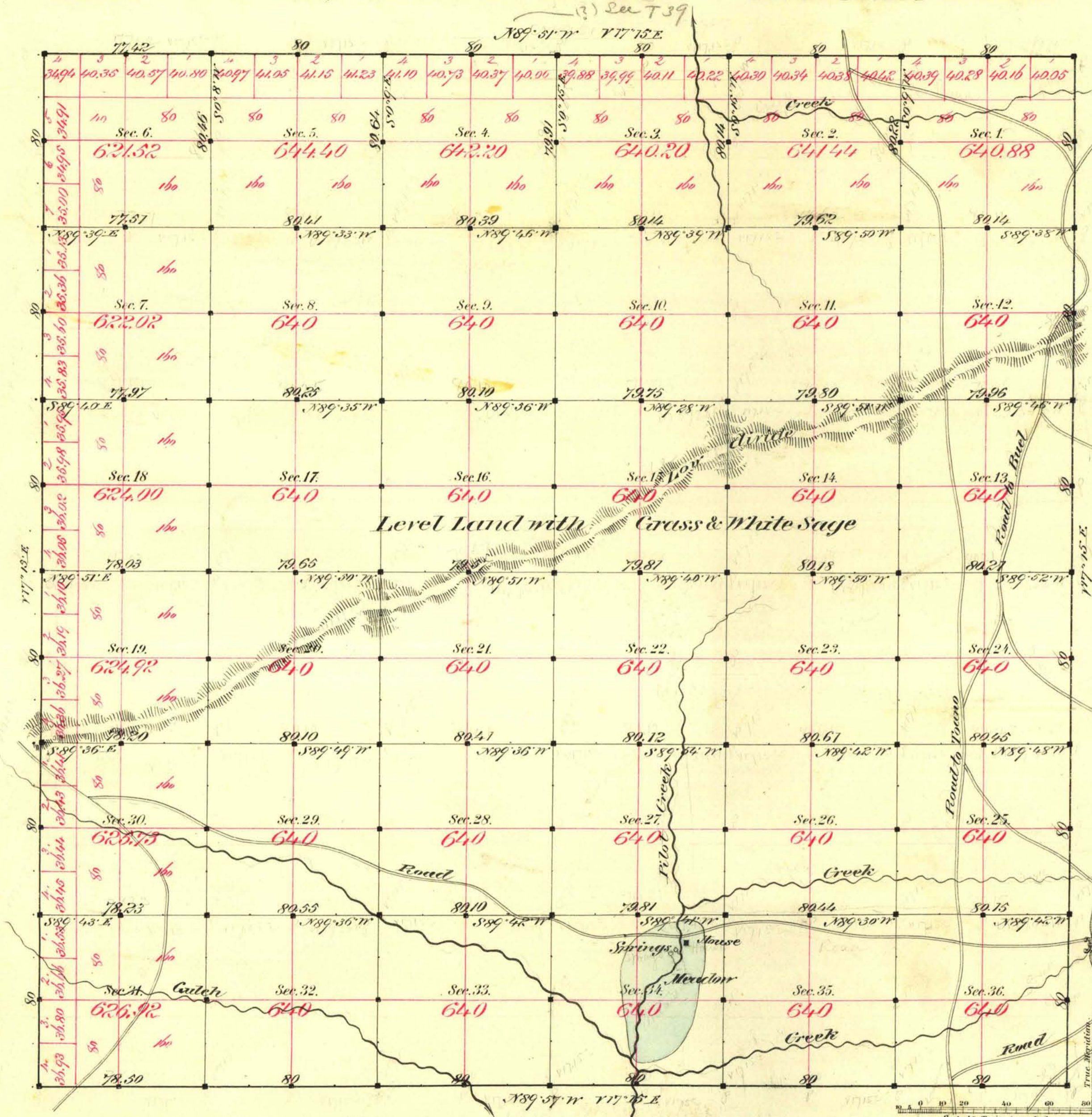


TOWNSHIP N^o 38 NORTH RANGE N^o 69 EAST MOUNT DIABLO MERIDIAN



Reserve Cont 186 For connections see R 68

Aggregate area of Public Land Imaged 22,954.23 Acres.

Reserve Cont 223

Commenced June 24th 1881
Completed " 30th "

Subdivisions made with a view of 17' 15" East

Survey Designated	By Whom Surveyed	Date of Contract	Amount of Surveys	When Surveyed
Ownership lines	Samuel & Noble	April 10 th 1881	212-75-82	1881
Subdivisions	"	"	39-74-03	"

77th Cont
119

The above Map of Township N. 38 North of Range N. 69 East Mount Diablo Meridian is strictly conformable to the field notes of the survey thereof on file in this Office, which have been examined and approved.

Surveyor General's Office,
Virginia City Nev.
July 16th 1881

D. A. Davis,
Sur. Gen.