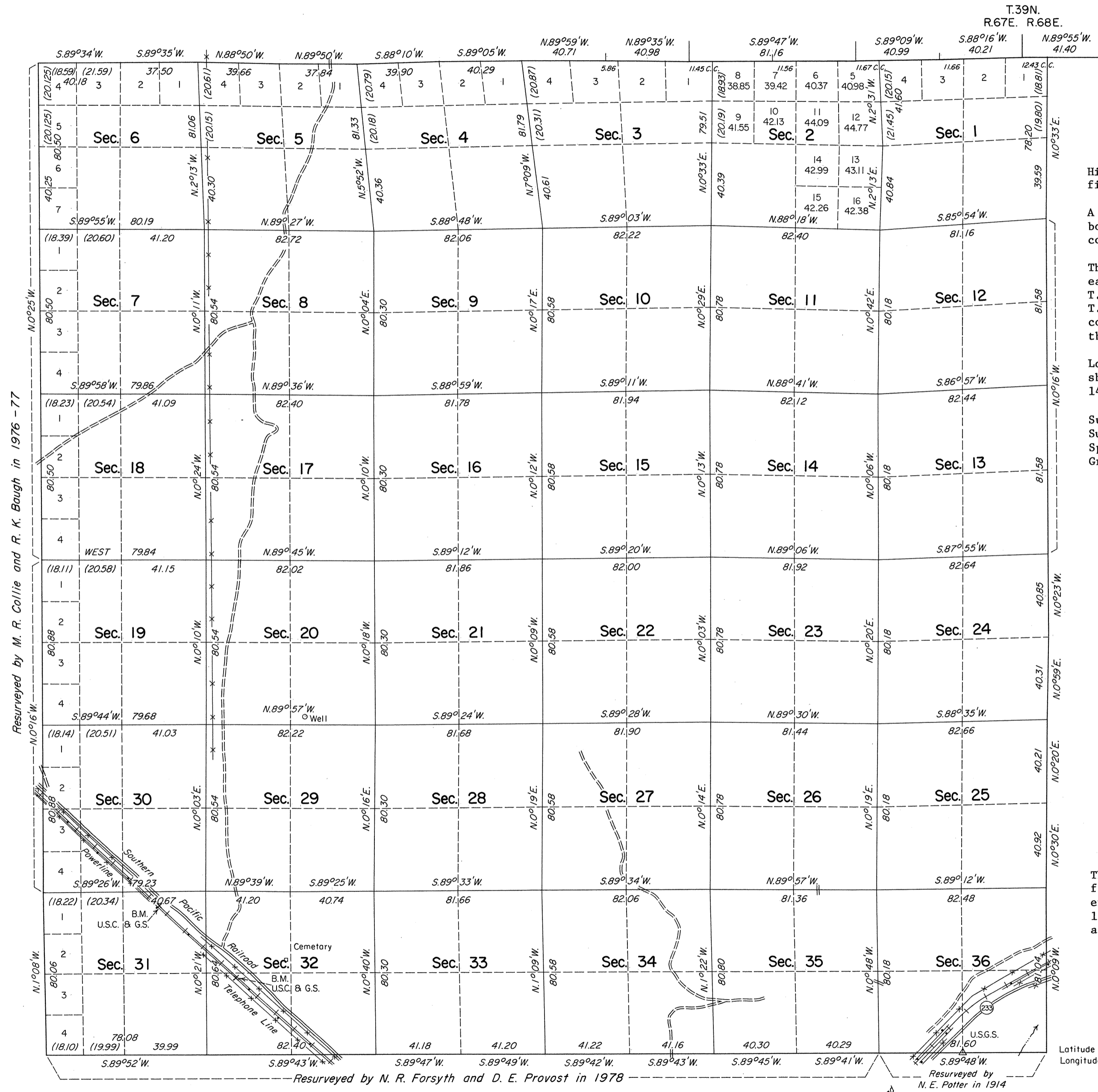


TOWNSHIP 38 NORTH, RANGE 67 EAST, OF THE MOUNT DIABLO MERIDIAN, NEVADA

DEPENDENT RESURVEY

Sec. 34 Sec. 35 Sec. 36 Sec. 31



History of the earlier surveys is contained in the field notes.

A dependent resurvey of a portion of the south boundary of T. 39 N., R. 68 E., was executed concurrently under this same group.

This plat represents a dependent resurvey of the east boundary and the subdivisional lines of T. 38 N., R. 67 E., and the south boundary of T. 39 N., R. 67 E., designed to restore the corners in their original locations according to the best available evidence.

Lottings and areas, except as shown hereon, are as shown on the plat approved April 2, 1880, August 14, 1895, and April 10, 1907.

Survey executed by Ronald E. Williams, Cadastral Surveyor, June 18 to November 5, 1980, under Special Instructions dated April 9, 1980, for Group No. 582, Nevada.

UNITED STATES DEPARTMENT OF THE INTERIOR
BUREAU OF LAND MANAGEMENT

Reno, Nevada October 12, 1982

This plat is strictly conformable to the approved field notes, and the survey, having been correctly executed in accordance with the requirements of law and the regulations of this Bureau, is hereby accepted.

For the Director

Lacel E. Bland

Chief Cadastral Surveyor

Latitude 41°07'36.0"N.
Longitude 114°19'56.1"W.

