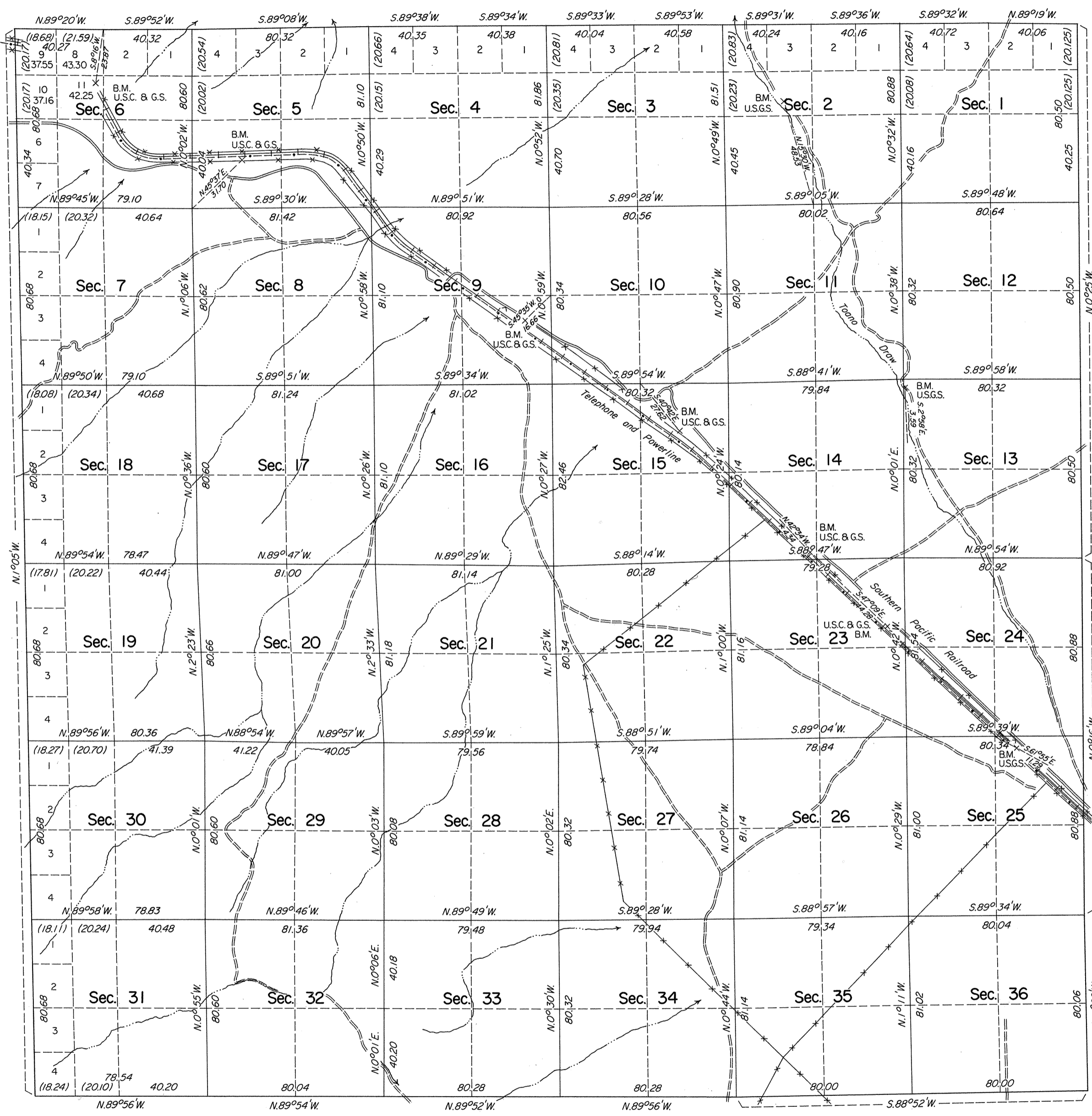


OFFICIALLY FILED  
NEVADA STATE OFFICE  
7:30 MAR 5, 1979

# TOWNSHIP 38 NORTH, RANGE 66 EAST, OF THE MOUNT DIABLO MERIDIAN, NEVADA

## DEPENDENT RESURVEY



A history of surveys is contained in the field notes.

A dependent resurvey of the south boundary was concurrently executed under T. 37 N., R. 66 E., of this group.

This plat represents a dependent resurvey of the east, north and west boundaries and the subdivisional lines of T. 38 N., R. 66 E., Mount Diablo Meridian, Nevada, designed to restore the corners in their original locations according to the best available evidence.

Except as shown hereon, lottings and areas are as shown on the plat approved April 2, 1880.

Survey executed by Michael R. Collie and Ronald K. Baugh, Cadastral Surveyors, October 26, 1976 through October 12, 1977, under Special Instructions dated August 19, 1976, for Group No. 543, Nevada.

UNITED STATES DEPARTMENT OF THE INTERIOR  
BUREAU OF LAND MANAGEMENT  
Washington, D.C. September 15, 1978

This plat is strictly conformable to the approved field notes, and the survey, having been correctly executed in accordance with the requirements of law and the regulations of this Bureau, is hereby accepted.

For the Director

*Bernard W. Fisher*  
Chief, Division of Cadastral Survey

Latitude 41°07'34.7\"/>

