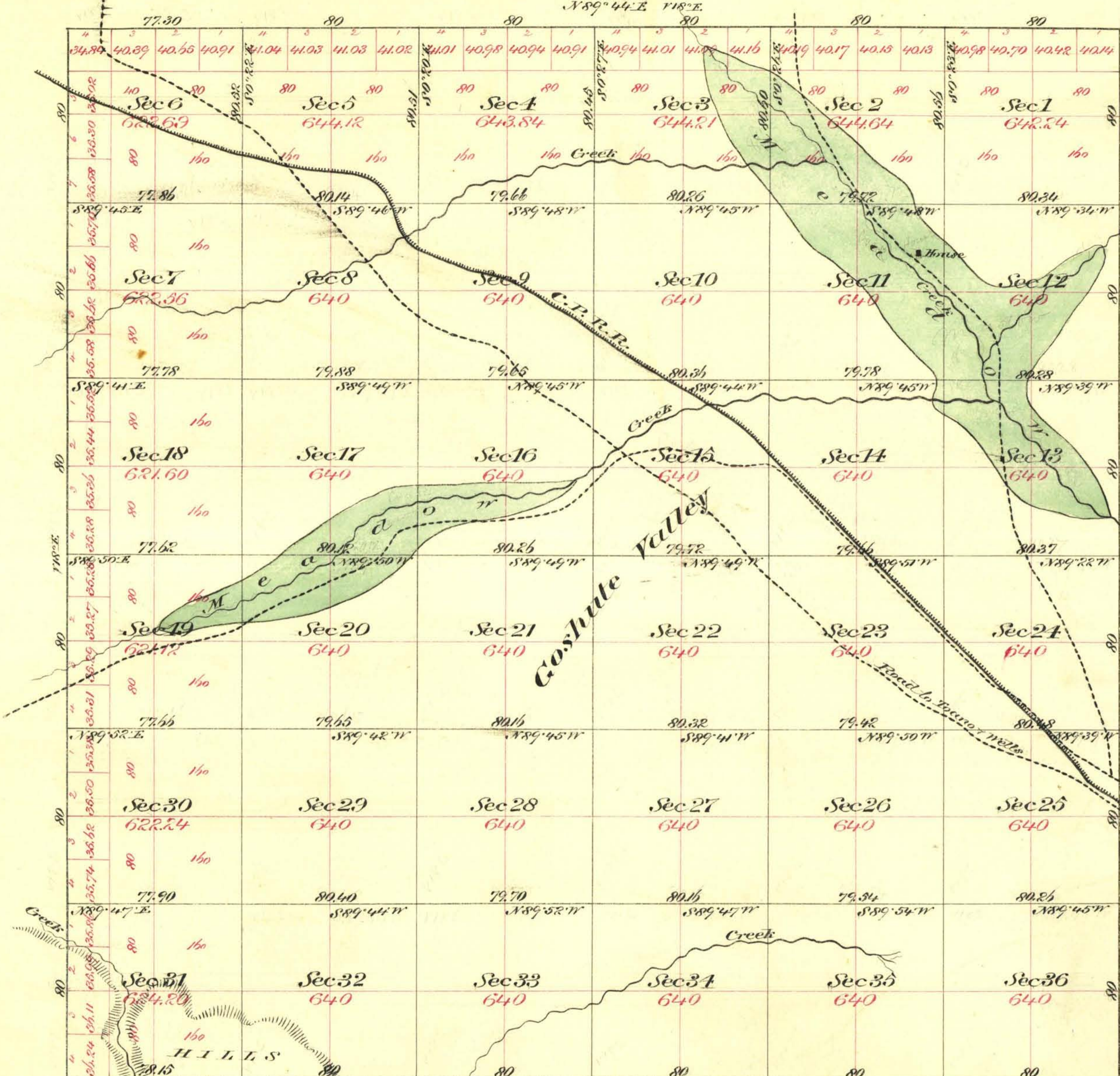


Township N° 38 North

Range N° 66 East

Mount Diablo Meridian

Resur Cont 156



Aggregate Area of Public Land Surveyed 22,953.46 Ac.

Commenced February 19th 1880
Completed March 14th "

Sub division lines not otherwise noted run with variation of 18' East

The above plat of Township N° 38 North of Range N° 66 East Mount Diablo Meridian is strictly conformable to the field notes of the surveys thereof on file in this office which have been examined and approved
U.S. Surv. Genl. Office
Virginia City Nev.
April 2nd 1880

L. S. Davis
U. S. Surv. Genl. Sur.

Survey designated	By whom Surveyed	Date of contract	Amt. of Survey	When Surveyed
Township line	Dunker & Colver	December 1 st 1879	25 - 75 - 45	1880
Sub divisions	"	"	59 - 71 - 75	Feb + Mar. "

71° Cont
92

3051

T38N, R66E VD