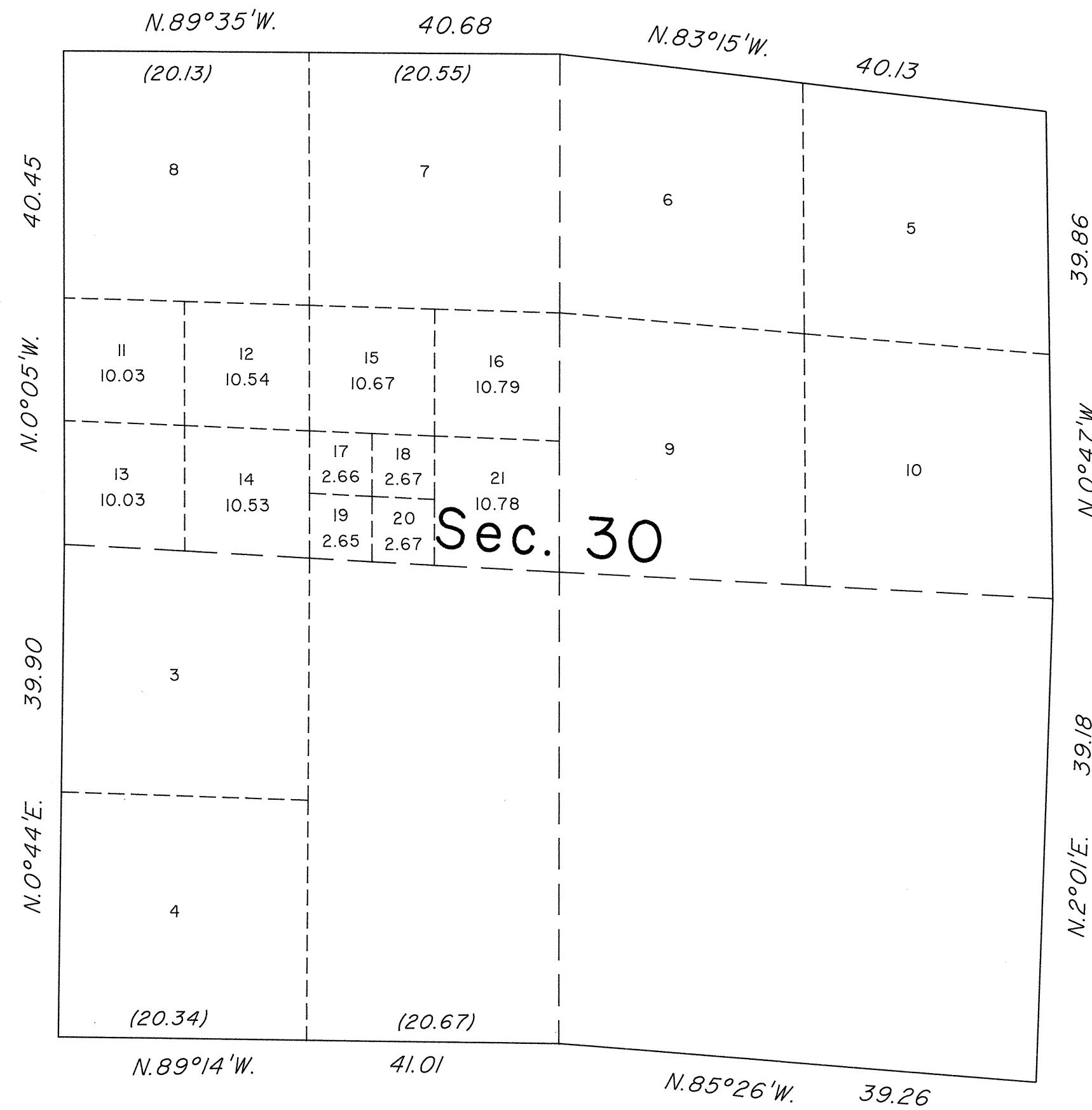
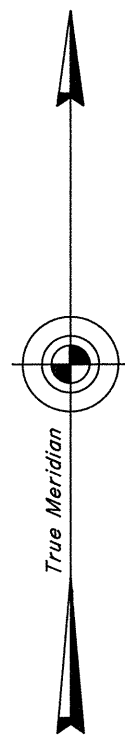


TOWNSHIP 38 NORTH, RANGE 62 EAST, MOUNT DIABLO MERIDIAN, NEVADA
SUPPLEMENTAL PLAT OF SECTION 30



This plat represents an amended lotting of original lot 2 and the SW 1/4 of the NW 1/4 of sec. 30, T. 38 N., R. 62 E., Mount Diablo Meridian, Nevada, is based upon the plat approved November 9, 1870 and the plat accepted December 19, 1984.

Certain areas and lots shown hereon in section 30 pertain to Federal Estates only.

UNITED STATES DEPARTMENT OF THE INTERIOR
BUREAU OF LAND MANAGEMENT

Reno, Nevada April 3, 1992

This plat, showing amended lottings, is based upon the official records, and having been correctly prepared in accordance with the regulations of this Bureau, is hereby accepted.

For the Director

James A. Munson

Acting Chief Cadastral Surveyor, Nevada

