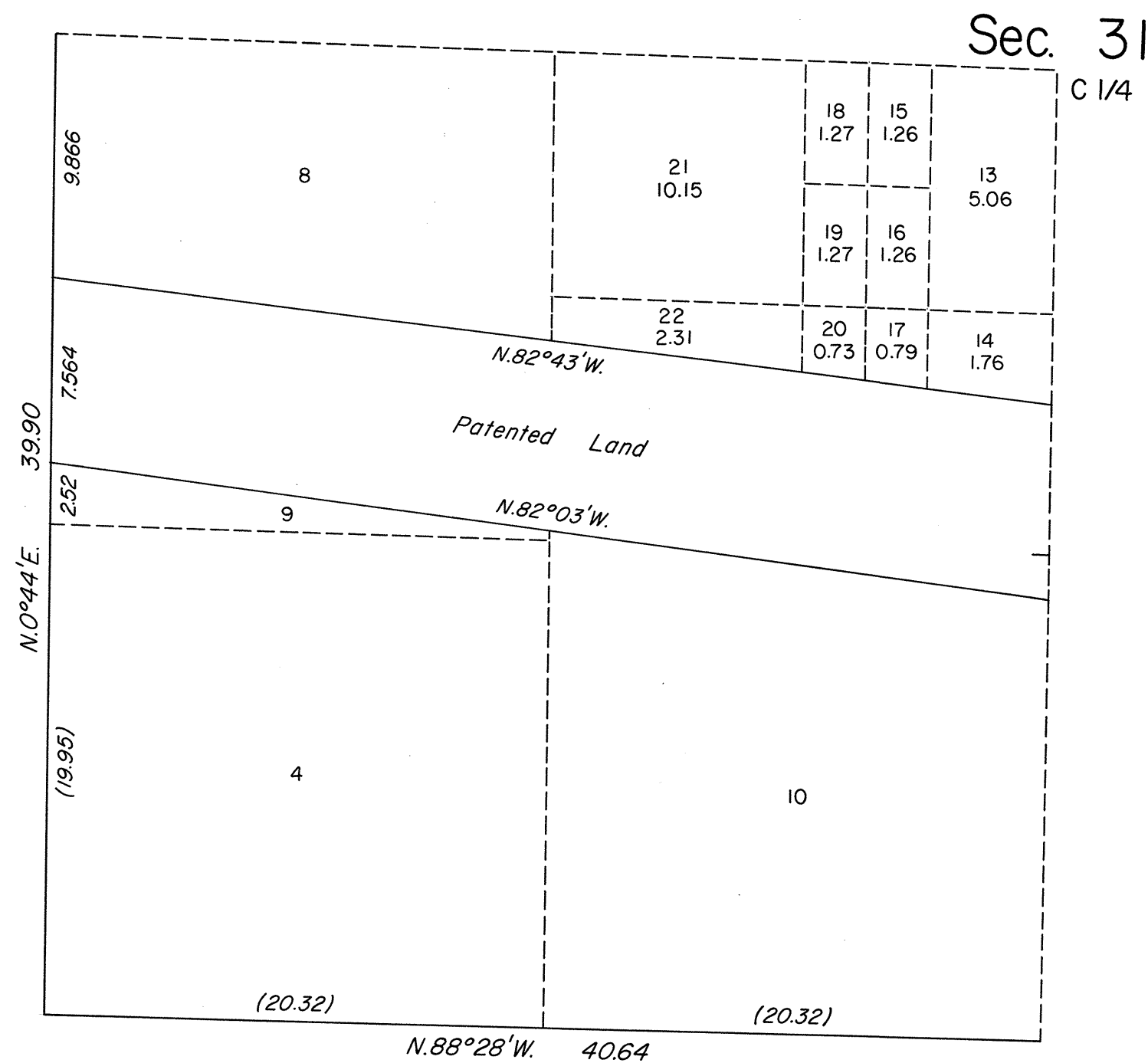
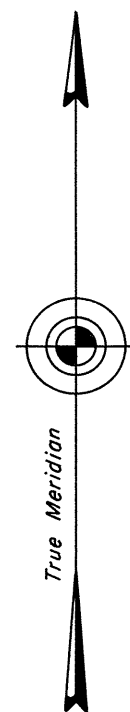


TOWNSHIP 38 NORTH, RANGE 62 EAST, OF THE MOUNT DIABLO MERIDIAN, NEVADA  
SUPPLEMENTAL PLAT OF SW 1/4 SECTION 31



This plat, showing a subdivision of original lot 7 of sec. 31, T. 38 N., R. 62 E., Mount Diablo Meridian, Nevada, is based upon the plats approved November 9, 1870 and March 21, 1884, and the plats accepted December 19, 1984 and December 13, 1985.

Certain lots shown hereon pertain to Federal Estates only.

UNITED STATES DEPARTMENT OF THE INTERIOR  
BUREAU OF LAND MANAGEMENT

Reno, Nevada December 19, 1988

This plat, showing amended lottings, is based upon the official records and, having been correctly prepared in accordance with the regulations of this Bureau, is hereby accepted.

For the Director

*Lacel E Bland*

Chief Cadastral Surveyor

✓  
1/49