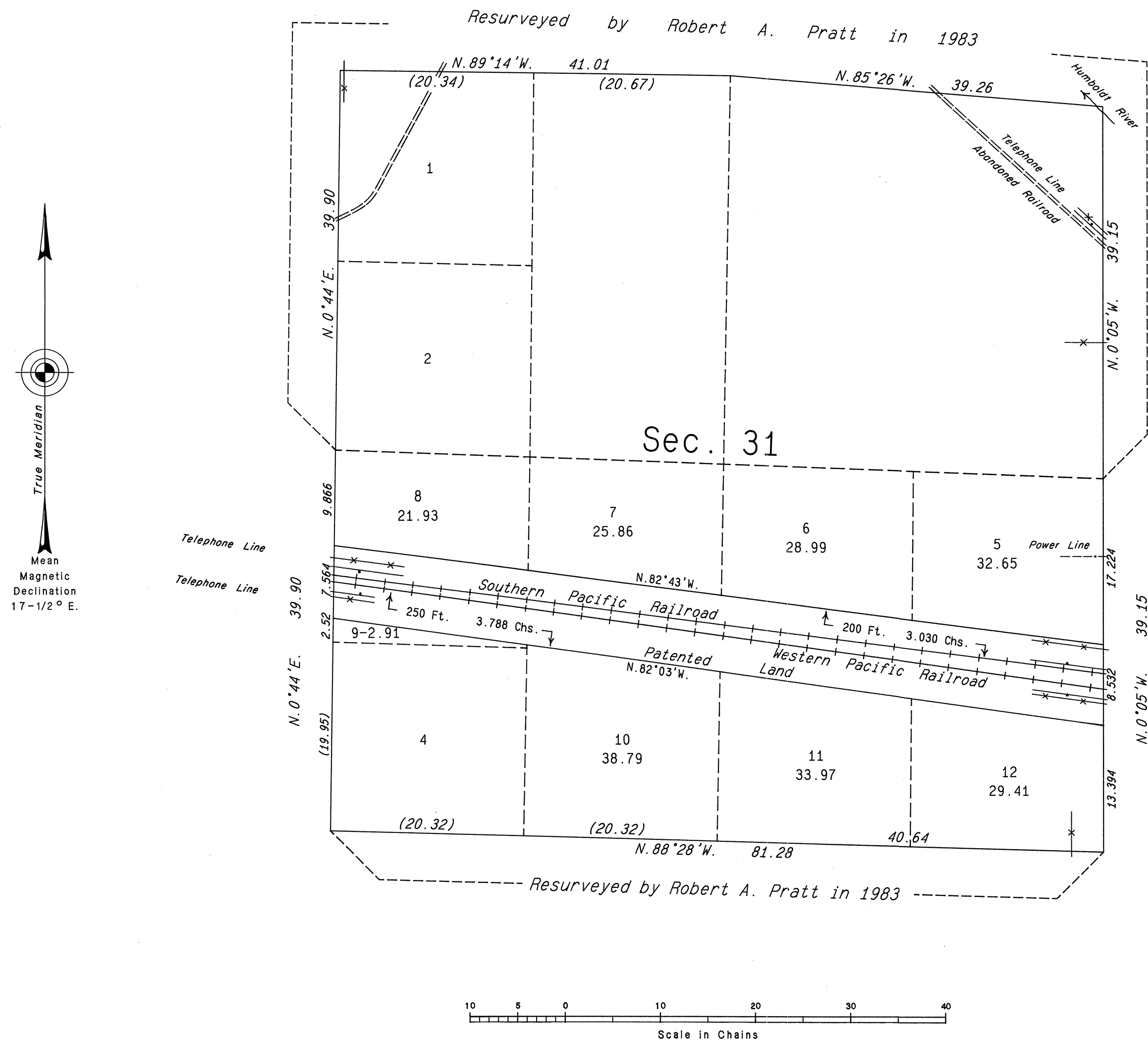


TOWNSHIP 38 NORTH, RANGE 62 EAST, OF THE MOUNT DIABLO MERIDIAN, NEVADA  
RETRACEMENT OF A PORTION OF SECTION 31



History of the earlier surveys is contained in the field notes.

This plat represents a retracement of the south one-half mile of the west boundary and the south one-half mile of the east boundary of section 31, T. 38 N., R. 62 E., Mount Diablo Meridian, Nevada.

Except as indicated hereon, the areas and lottings are as shown on the plats approved November 9, 1870, March 21, 1884 and December 19, 1984.

Certain areas and lots shown hereon pertain to Federal Estates only.

Survey executed by Ronald E. Williams, Cadastral Surveyor, beginning October 10, 1985 and completed October 11, 1985, pursuant to Special Instructions dated October 4, 1985 for Group No. 628, Nevada.

UNITED STATES DEPARTMENT OF THE INTERIOR  
BUREAU OF LAND MANAGEMENT

Reno, Nevada December 13, 1985

This plat is strictly conformable to the approved field notes, and the survey, having been correctly executed in accordance with the requirements of law and the regulations of this Bureau, is hereby accepted.

For the Director

Lucel E. Bland  
Chief Cadastral Surveyor