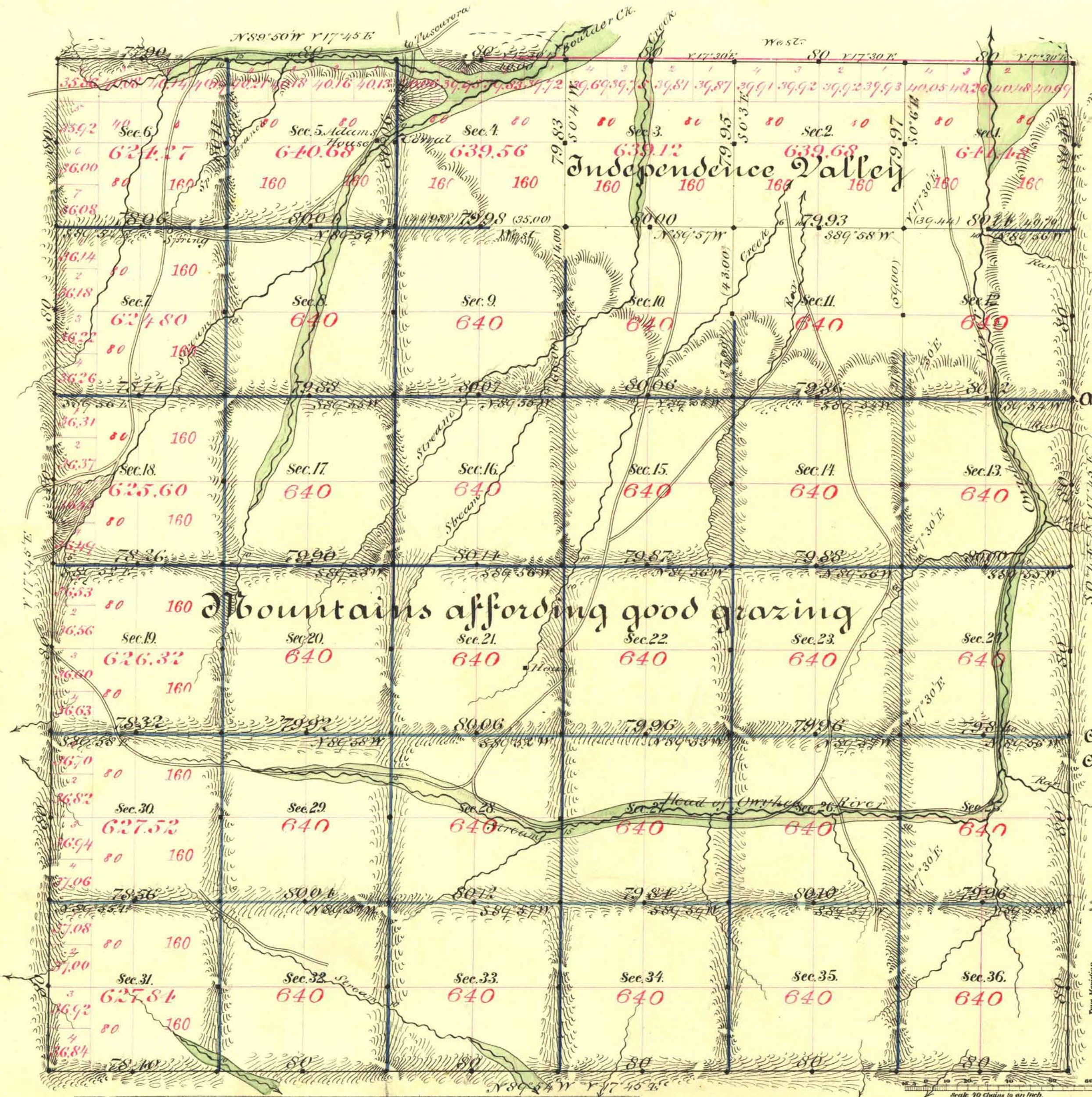


TOWNSHIP N^o 38 NORTH RANGE N^o 51 EAST

MOUNT DIABLO MERIDIAN



Aggregate area of Public Land surveyed 22956.87 ac.

Commenced Oct. 22nd 1884
Completed " 30th "

Subdivisions not noted run with a Var. of 12' 45" East

Surveys Designated.	By Whom Surveyed.	Date of Contract.	Amount of Surveys.	When Surveyed.	77 th Con.
N. Bay. road.	Hatch & Eaton	Nov. 26 th 1870	23 - 90 - 88	1870	41
N. bk. E. N. & S. bay.	T. K. Stewart	Aug. 7 th 1884	20 - 78 - 80	1884	170
Subdiv. s. black blue	McClellan & Briggs	Aug. 9 th "	7 - 30 - 12	Oct. 1884	171
	"	"	52 - 40 - 81	"	"

The above Map of Township No. 38 North of Range No. 51 East of Mount Diablo Meridian is strictly conformable to the field notes of the survey thereof on file in this Office, which have been examined and approved.

Surveyor General's Office, Reno, *C. C. Downing*
January 13th 1885 U.S. Sur. Gen'l of Nevada.