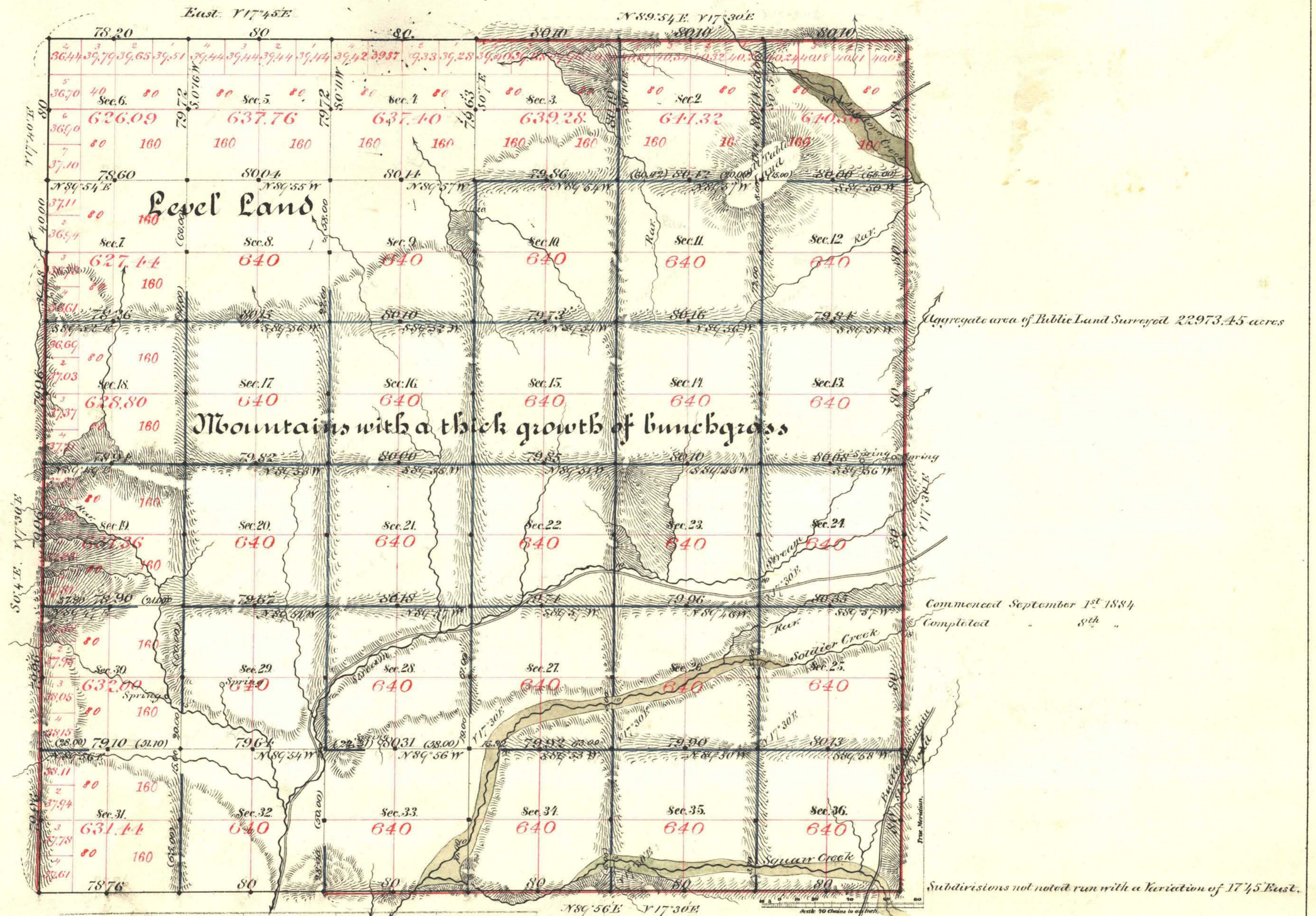


TOWNSHIP N^o 38 NORTH RANGE N^o 49 EAST MOUNT DIABLO MERIDIAN



Surveys Designated.	By Whom Surveyed.	Date of Contract.	Amount of Surveys.	When Surveyed.
N.S.S. 1st, 2nd, 3rd, 4th, 5th, 6th, 7th, 8th, 9th, 10th, 11th, 12th, 13th, 14th, 15th, 16th, 17th, 18th, 19th, 20th, 21st, 22nd, 23rd, 24th, 25th, 26th, 27th, 28th, 29th, 30th, 31st, 32nd, 33rd, 34th, 35th, 36th	Black, Marsh, Eaton & Smyles	Dec. 16 th 1872	5 - 76 - 46	1872
W.	Gunsida & Peble	Dec. 31 st 1874	1 - 40 - 00	1875
Rest of 1st, 2nd, 3rd, 4th, 5th, 6th, 7th, 8th, 9th, 10th, 11th, 12th, 13th, 14th, 15th, 16th, 17th, 18th, 19th, 20th, 21st, 22nd, 23rd, 24th, 25th, 26th, 27th, 28th, 29th, 30th, 31st, 32nd, 33rd, 34th, 35th, 36th	Stewart & M. Clifton	Mar. 14 th 1884	14 - 00 - 12	1884
Subdivisions black	M. Clifton & Bridges	Aug. 9 th "	13 - 52 - 35	"
Subdivisions blue	"	"	46 - 20 - 94	"

The above Map of Township No. 38 North of Range No. 49 East of Mount Diablo Meridian is strictly conformable to the field notes of the survey thereof on file in this Office, which have been examined and approved.

Surveyor General's Office, Reno, *L. L. Cowling*
 U.S. Surv. Gen'l of Nevada.
 January 13th 1885