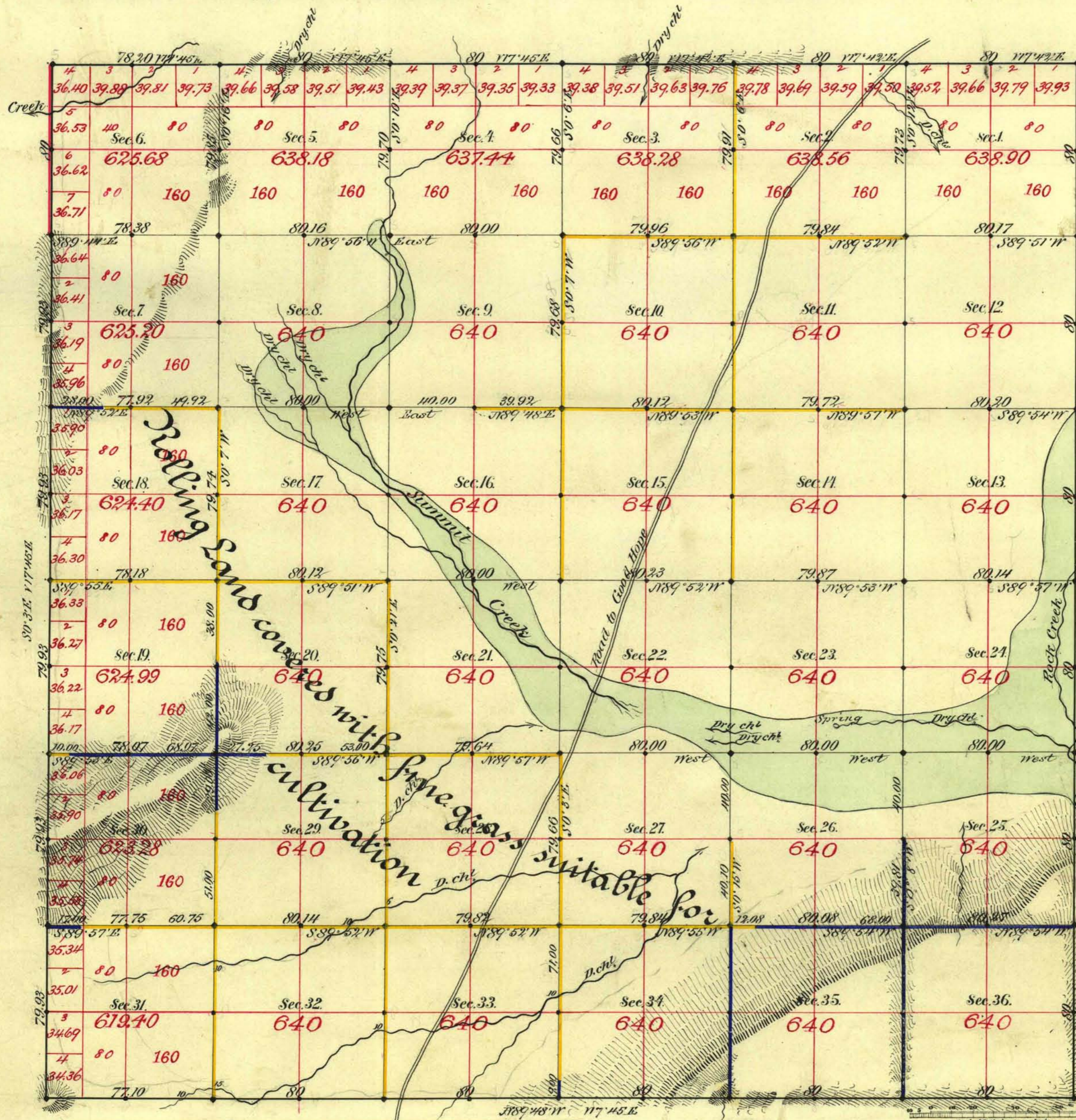


Survey by McClellan and Bridges rejected by
 Com. Gen. Land Office by letter dated May 31 1888.

Approved by Com^r Gen^l L.O. March 25th 1896

TOWNSHIP N^o 38 NORTH RANGE N^o 46 EAST MOUNT DIABLO MERIDIAN



Aggregate Area of Public Land Surveyed by
 Hatch, Eaton & Smyler Nov. 16th 1872 8777.76 Ac.
 " by McClellan & Bridges Nov. 14th 1881 14156.55 "
 Aggregate 22934.31 "

Old work commenced Jan. 6th 1873
 " " completed " 84
 New " commenced March 14th 1885
 " " completed " 1885

Old work approved by C. S. Davis Jan. 13th 1873

Subdms. run within a Var of 1st 45 East

Surveys Designated.	By Whom Surveyed.	Date of Contract.	Amount of Surveys.	When Surveyed.	No.
N. & S. by. 11. red	Hatch, Eaton & Smyler	Nov. 16 th 1872	26 - 38 - 09	January 1873	54
Subdms. black	"	"	26 - 38 - 09	January 1873	173
N. & S. by. 8. blue	S. K. Stewart	" 10 th 1884	10 - 76 - 10	" 1884	174
Subdms. yellow	McClellan & Bridges	" 14 th "	26 - 21 - 89	March 1885	174
" blue	"	"	7 - 08 - 40	"	

The above Map of Township No. 38 North of Range No. 46 East
 Mount Diablo Meridian is strictly conformable to the field notes of the survey
 thereof on file in this Office, which have been examined and approved.

Surveyor General's Office, Reno, C. C. Downing
 U.S. Surv^r Gen^l of Nevada.
 June 2nd 1885