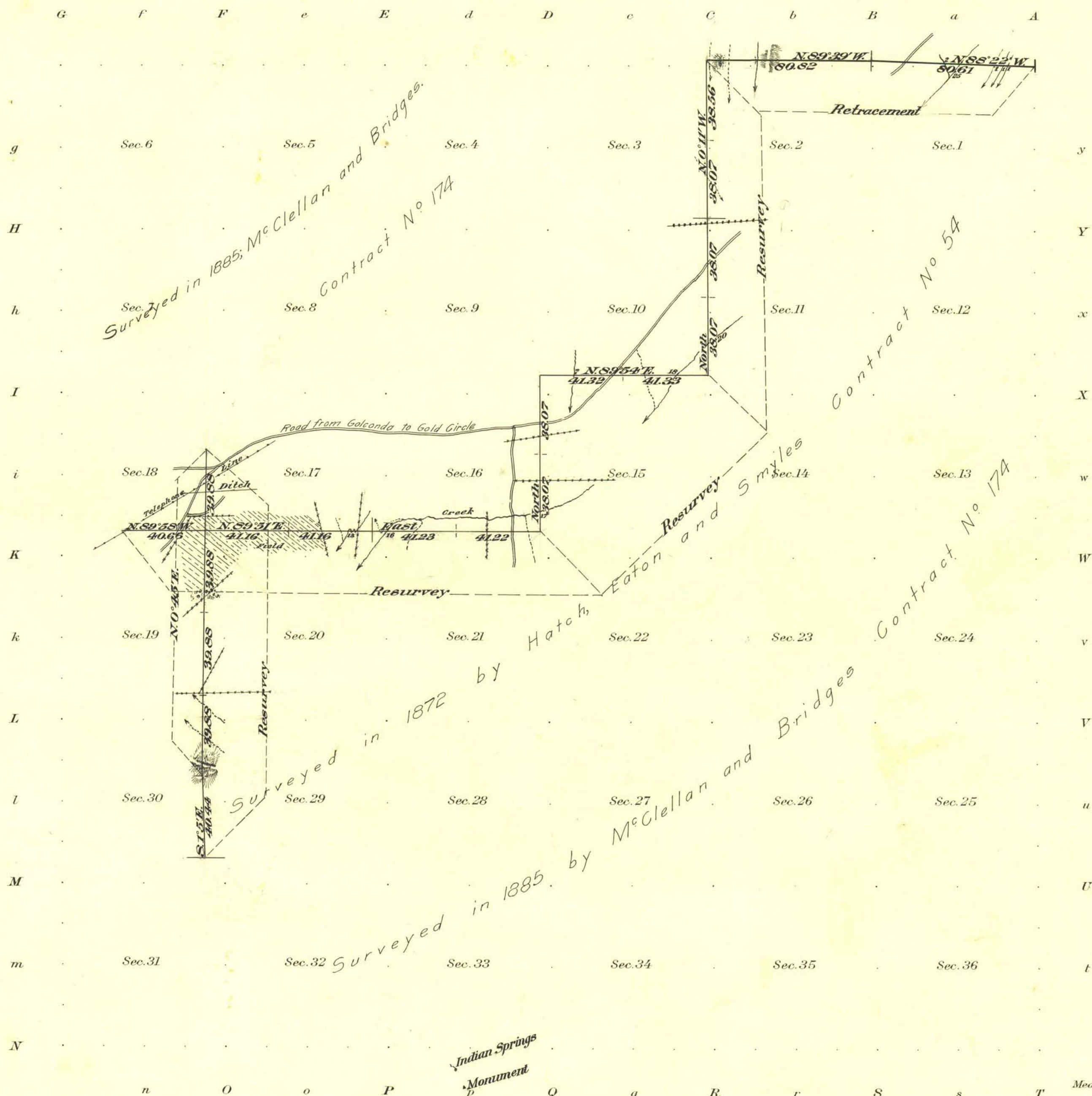


Township N^o 38 North, Range N^o 45 East, M^o Diablo Meridian, Nevada.



Areas in Acres	
Public Land	
Indian Reservation	
Indian Allotments	
Mineral Claims	
Water Surface	
Total Area	

Scale 40 Chains to an inch
Mean Magnetic Declination

Surveys Designated	By Whom Surveyed	Contract		Amount of Surveys			When Surveyed	
		No.	Date	Mls.	chs.	lks.	Begun	Completed
N. Bdy. Retracement	William Strover	Sp. Ins. Let. E	Sept 23, '0	2	01	43	November 19, 1911	
Subdivisions Resurvey	" "	" "	" "	8	76	25	May 21, 1911	May 23, 1911

The above map of Township No. 38 North, Range No. 45 East of the M^o Diablo Meridian Nevada is strictly conformable to the field notes of the survey thereof on file in this office, which have been examined and approved
U. S. Surveyor General's Office.
Reno, Nevada, May 16, 1912.

W. H. Kyle
Surveyor General.