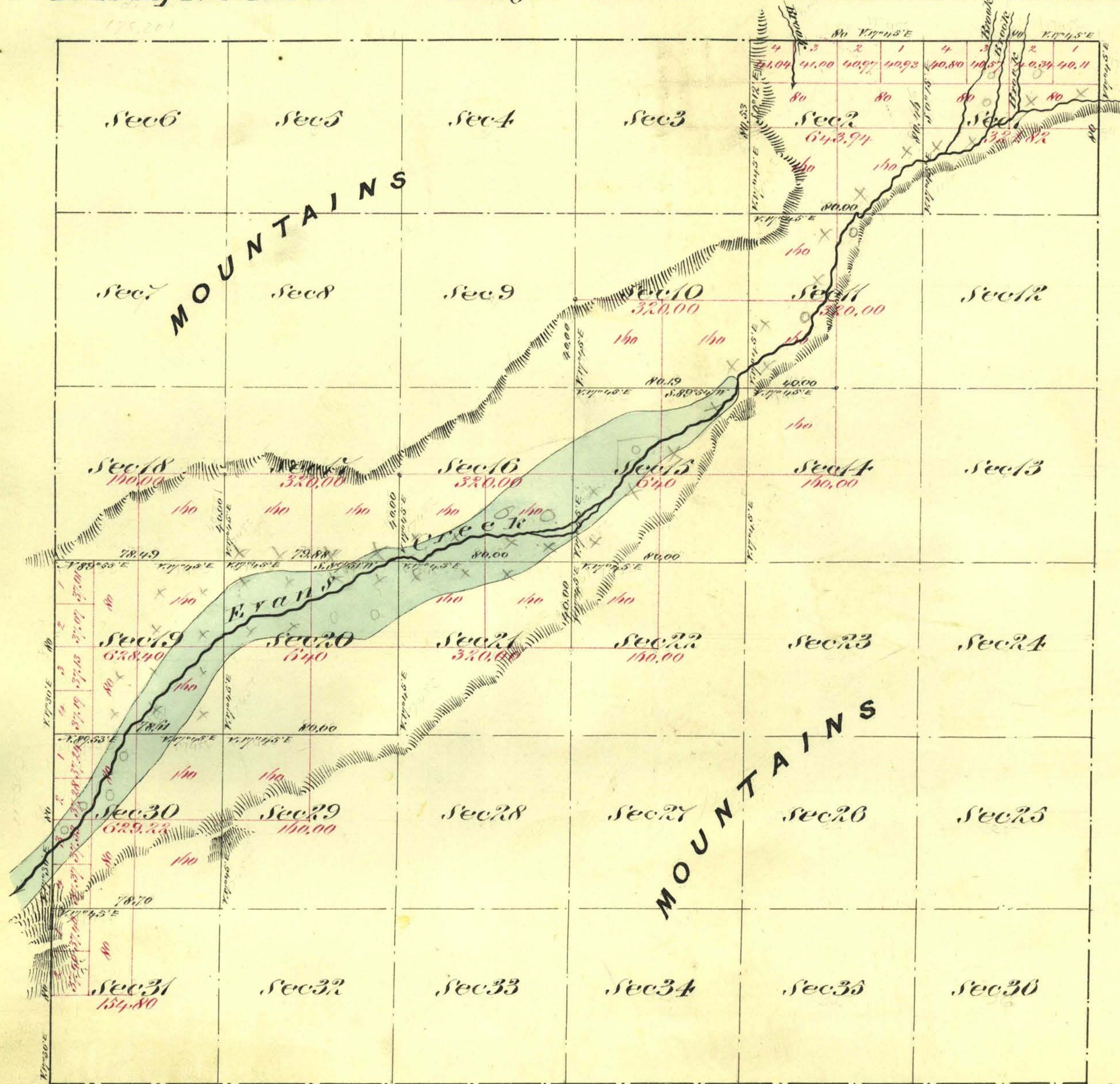


Township N^o 38 North

Range N^o 45 East

Mount Diablo Meridian



Aggregate Area of Public Land (Surveyed) 5,898.18 Acres
 Estimated " " Mountains (unsurveyed) 1,081.44 "
Aggregate 6,979.62 "

Commenced January 9th 1873
 Completed " " 10th 1873

Surveys Designated	By Whom Surveyed	Date of Contract	Am ^t of Survey M ^o C ^o S ^o	When Surveyed
West Boundary of Township N ^o 38	A. J. Hatch & J. C. Samples	Dec ^r 15 th 1871	3 00 00	1872
" " "	A. J. Hatch & H. Eaton & J. C. Samples	Nov ^r 16 th 1872	3 00 00	"
Subdivision lines	" " " " " "	" " "	19 36 84	January 1873

The above Map of Township N^o 38 North Range N^o 45 East Mount Diablo Meridian is strictly conformable to the field notes of the Surveys thereof on file in this Office which have been examined and approved
 W. S. Sawyer General's Office
 Virginia City Nevada
 February 15th 1873

E. S. Davis

T38N, R45E. U.S. Surveyor General Nevada