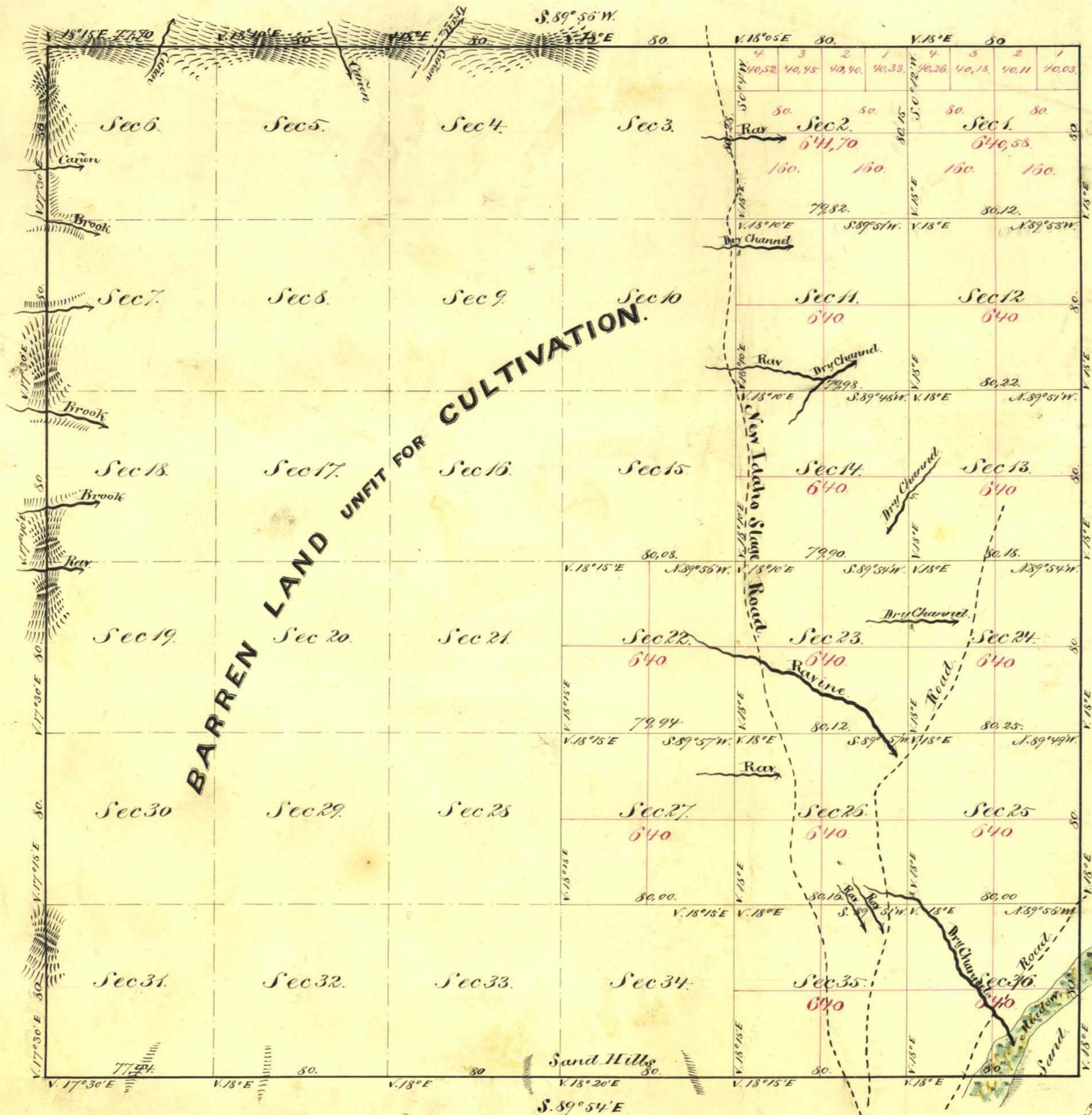


Township N°38 North. Range N°38 East Mount Diablo Meridian.



Aggregate Area of Public Land (Surveyed) 8,962.25 Acres  
 Estimated " " Barren Mountains (unsurveyed) 13,978.72 "   
Aggregate 22,941.00 "

8962.28  
 1280  
 7682.28  
 13978.72  
 22941.00

Commenced September 11<sup>th</sup> 1868  
 Completed " 8<sup>th</sup> 1868

Surveys Designated	By Whom Surveyed	Date of Contract	Amount of Surveys Acs. Chs. Pcs.	When Surveyed	P <sup>o</sup> Con.
Township lines	William Epler	July 20 <sup>th</sup> 1867	23 75. 64.	1867	5
Subdivision lines	A. J. Hatch	May 13 <sup>th</sup> 1868	27. 11. 20.	September 1868	14

The above Map of Township No 38 North Range No 38 East Mount Diablo Meridian is strictly conformable to the field notes of the surveys thereof on file in this Office which have been examined and approved  
 U.S. Surveyor General's Office  
 Virginia City, Nevada  
 January 15<sup>th</sup> 1869