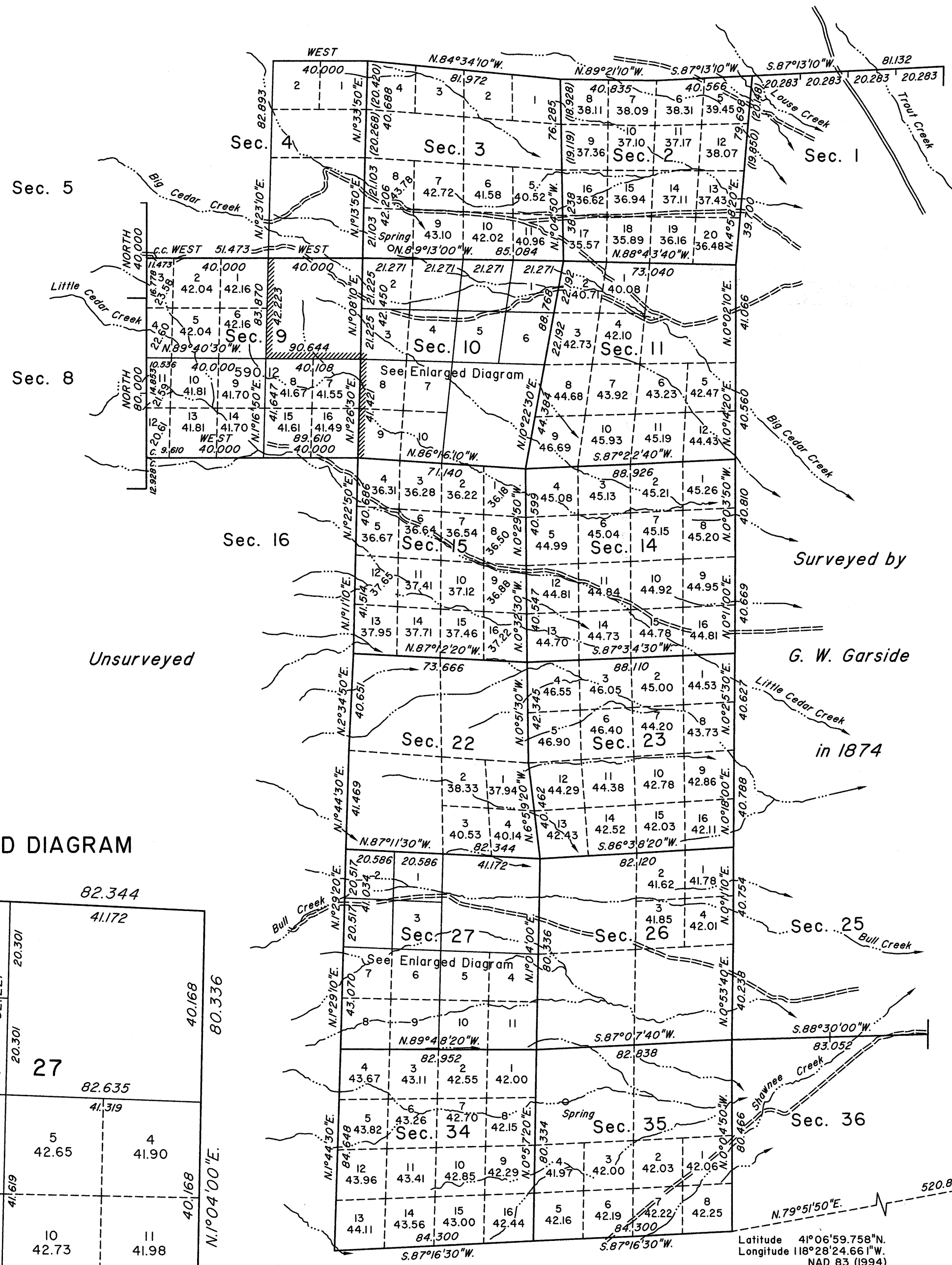
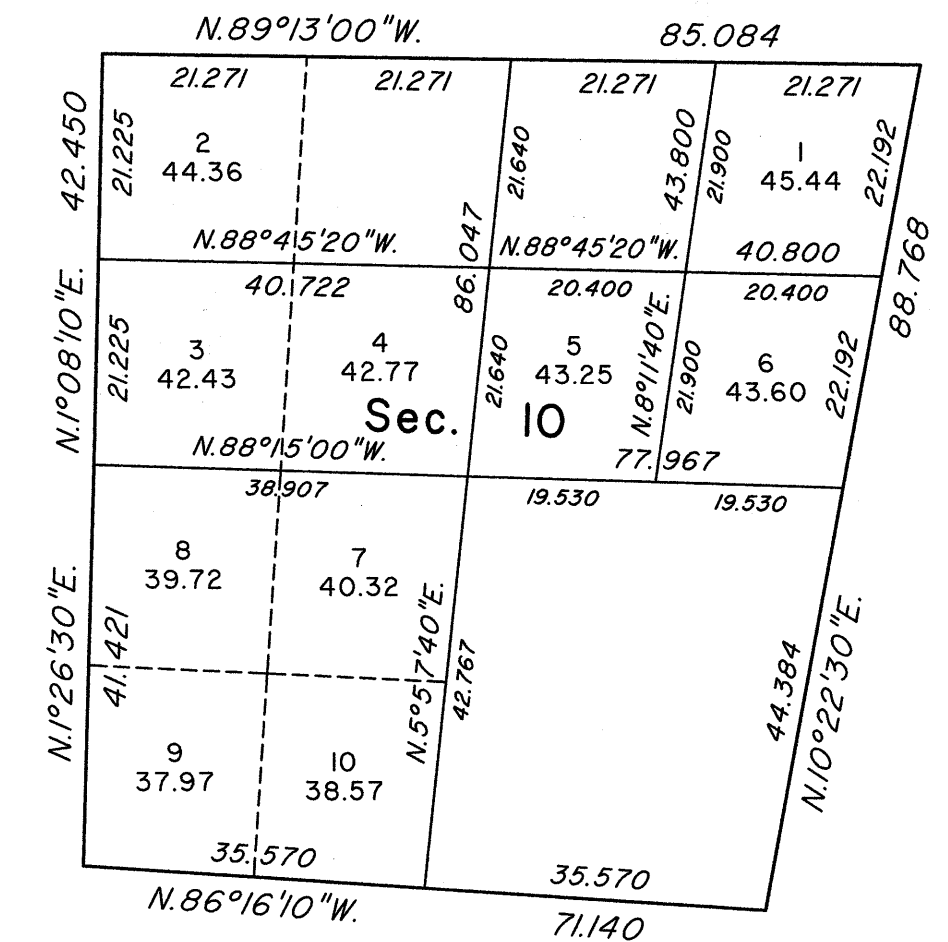


TOWNSHIP 38 NORTH, RANGE 31 EAST, OF THE MOUNT DIABLO MERIDIAN, NEVADA
DEPENDENT RESURVEY, SURVEY AND SUBDIVISION

OFFICIALLY FILED
NEVADA STATE OFFICE
at 10:00 AM on **AUG 09 2013**



ENLARGED DIAGRAM



Scale in Chains

A history of surveys is contained in the field notes.

This plat represents the dependent resurvey of portions of the south and north boundaries and a portion of the subdivision lines designed to restore the corners in their true original locations according to the best available evidence, the survey of a portion of the subdivision lines, and the subdivision of certain sections, Township 38 North, Range 31 East, Mount Diablo Meridian, Nevada.

Except as indicated hereon, the lottings and areas are as shown on the plat approved November 16, 1874.

Survey executed by Thomas E. Casinger and Don R. Aschenbach, Cadastral Surveyors, beginning June 11, 2001, and completed August 26, 2004, pursuant to Special Instructions dated June 4, 2001, and Supplemental Special Instructions dated August 27, 2001, and December 6, 2002, for Group No. 802, Nevada.

UNITED STATES DEPARTMENT OF THE INTERIOR
BUREAU OF LAND MANAGEMENT

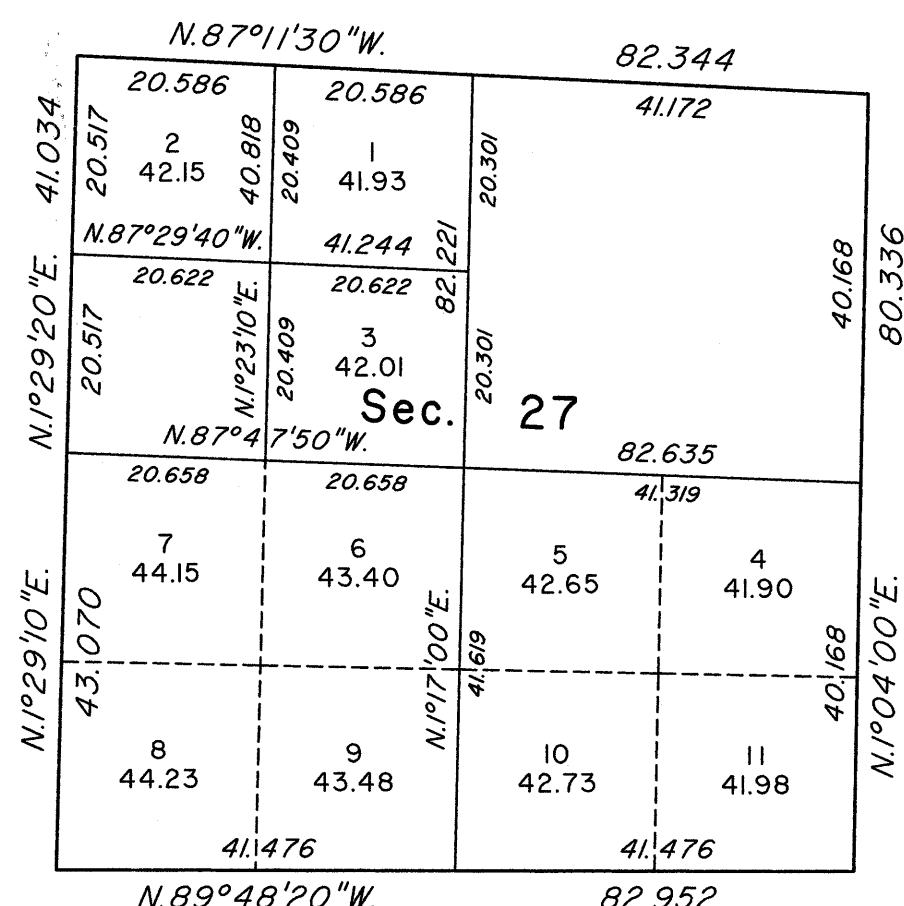
Reno, Nevada June 25, 2013

This plat is strictly conformable to the approved field notes, and the survey, having been correctly executed in accordance with the requirements of law and the regulations of this Bureau, is hereby accepted.

For the Director

Chief Cadastral Surveyor, Nevada

ENLARGED DIAGRAM



Scale in Chains

Scale in Chains
Area Surveyed, 590.12 Acres