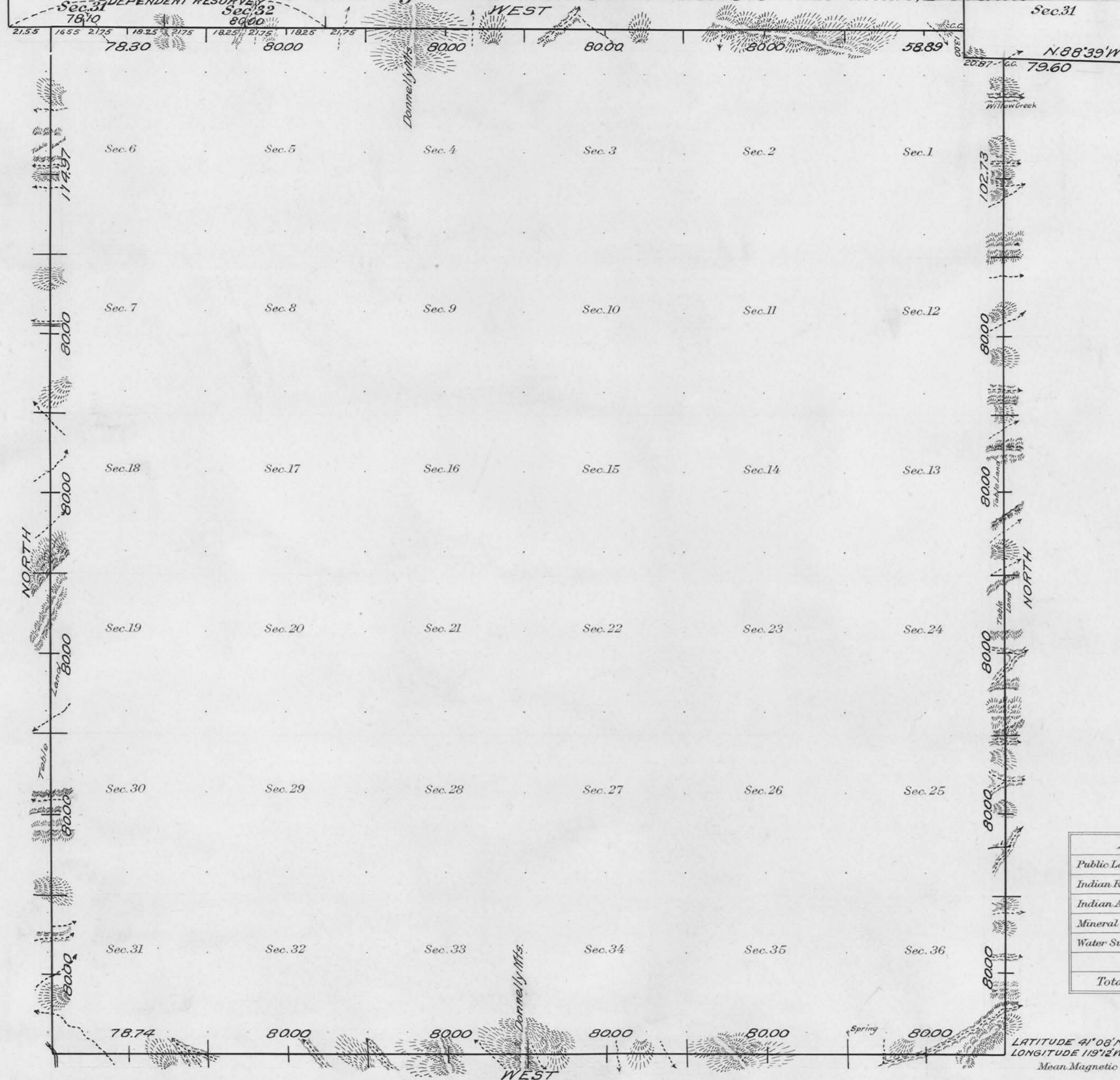


Accepted October 11, 1923

Township No 38 North Range No 24 East Mt Diablo Meridian, Nevada



Areas in Acres	
Public Land	
Indian Reservation	
Indian Allotments	
Mineral Claims	
Water Surface	
Total Area	

Surveys Designated	By Whom Surveyed	Group		Amount of Surveys			When Surveyed	
		No.	Date	Mls.	chs.	fks.	Begun	Completed
North Boundary Dep. Res.	Ernie Voigt U.S.	76	March 6, 1919	2	00	00	Aug. 5, 1920	Aug. 5, 1920
North Boundary	Cadastral Engineer	"	"	4	21	51	Aug. 5, 1920	June 12, 1922
East Boundary	"	"	"	6	35	73	July 12, 1920	June 12, 1922
South Boundary	"	"	"	5	78	74	Oct. 24, 1919	July 15, 1920
West Boundary	"	"	"	6	34	97	Aug. 13, 1920	Aug. 18, 1920

The above map of Township No. 38 North Range No. 24 East of the Mt. Diablo Meridian, Nevada is strictly conformable to the field notes of the survey thereof on file in this office, which have been examined and approved.

U.S. Surveyor General's Office.
 Reno, Nevada June 6, 1923
J. E. Keldner
 Surveyor General.