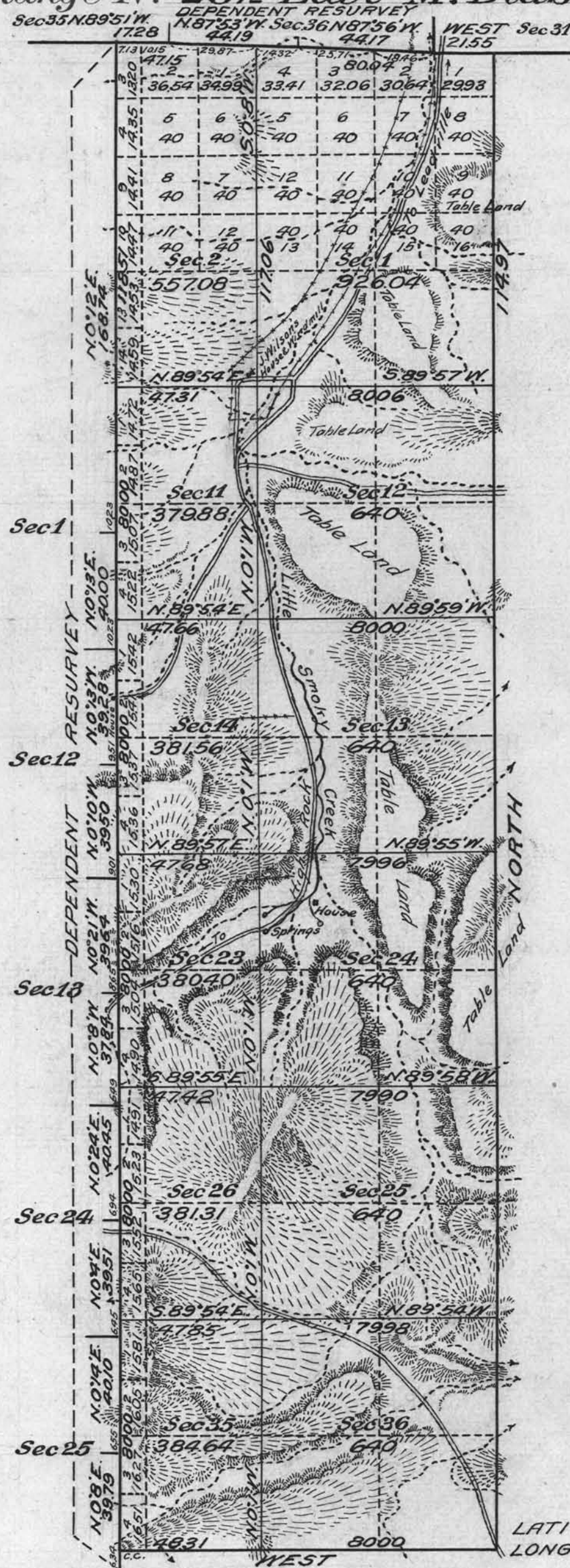


Township No. 38 North Range No. 23 1/2 East Mt. Diablo Meridian, Nevada



LATITUDE 41° 08' N.
LONGITUDE 119° 15' W.

Area in Acres	
Public Land	6590.91

0 10 20 40 80
Scale 40 Chains to an inch
Mean Magnetic Declination

Surveys Designated	By Whom Surveyed	Group		Amount of Surveys			When Surveyed	
		No.	Date	Mls.	chs.	lks.	Began	Completed
North Boundary Dep. Res.	Emil Voigt U.S.	76	March 6, 1919	1	47	19	Aug 4, 1920	Aug 5, 1920
West Boundary Dep. Res.	Cadastral Engineer	6		38	51		July 29, 1920	Aug 3, 1920
East Boundary		6		34	97		Aug 13, 1920	Aug 18, 1920
South Boundary		1		48	31		July 15, 1920	July 15, 1920
Subdivisions		14		34	88		Aug 19, 1920	Aug 24, 1920

The above map of Township No. 38 North Range No. 23 1/2 East of the Mt. Diablo Meridian Nevada is strictly conformable to the field notes of the survey thereof on file in this office, which have been examined and approved.

U. S. Surveyor General's Office.
Reno Nevada June 6, 1923

J. E. Seldner
Surveyor General.