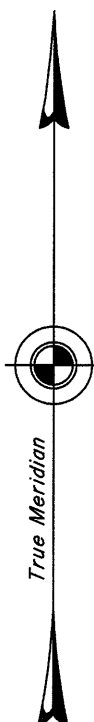
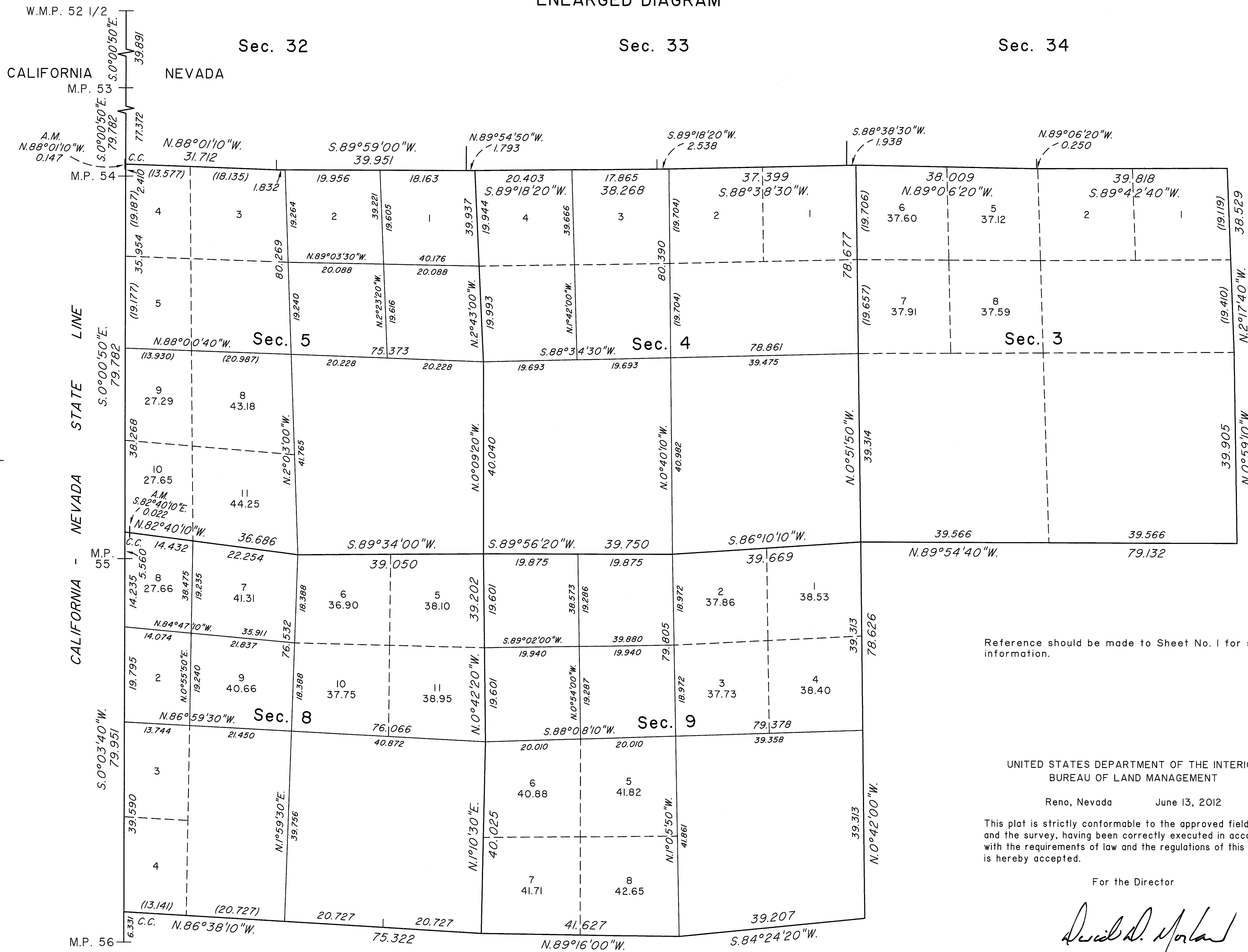


TOWNSHIP 38 NORTH, RANGE 18 EAST, OF THE MOUNT DIABLO MERIDIAN, NEVADA

ENLARGED DIAGRAM



Reference should be made to Sheet No. 1 for survey information.

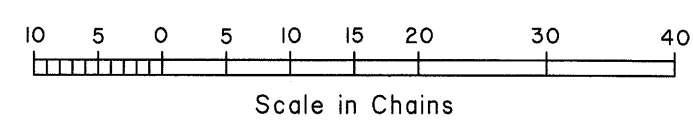
UNITED STATES DEPARTMENT OF THE INTERIOR  
BUREAU OF LAND MANAGEMENT

Reno, Nevada June 13, 2012

This plat is strictly conformable to the approved field notes, and the survey, having been correctly executed in accordance with the requirements of law and the regulations of this Bureau, is hereby accepted.

For the Director

Chief Cadastral Surveyor, Nevada



OFFICIALLY FILED  
NEVADA STATE OFFICE  
at 10:00 AM on June 20, 2012