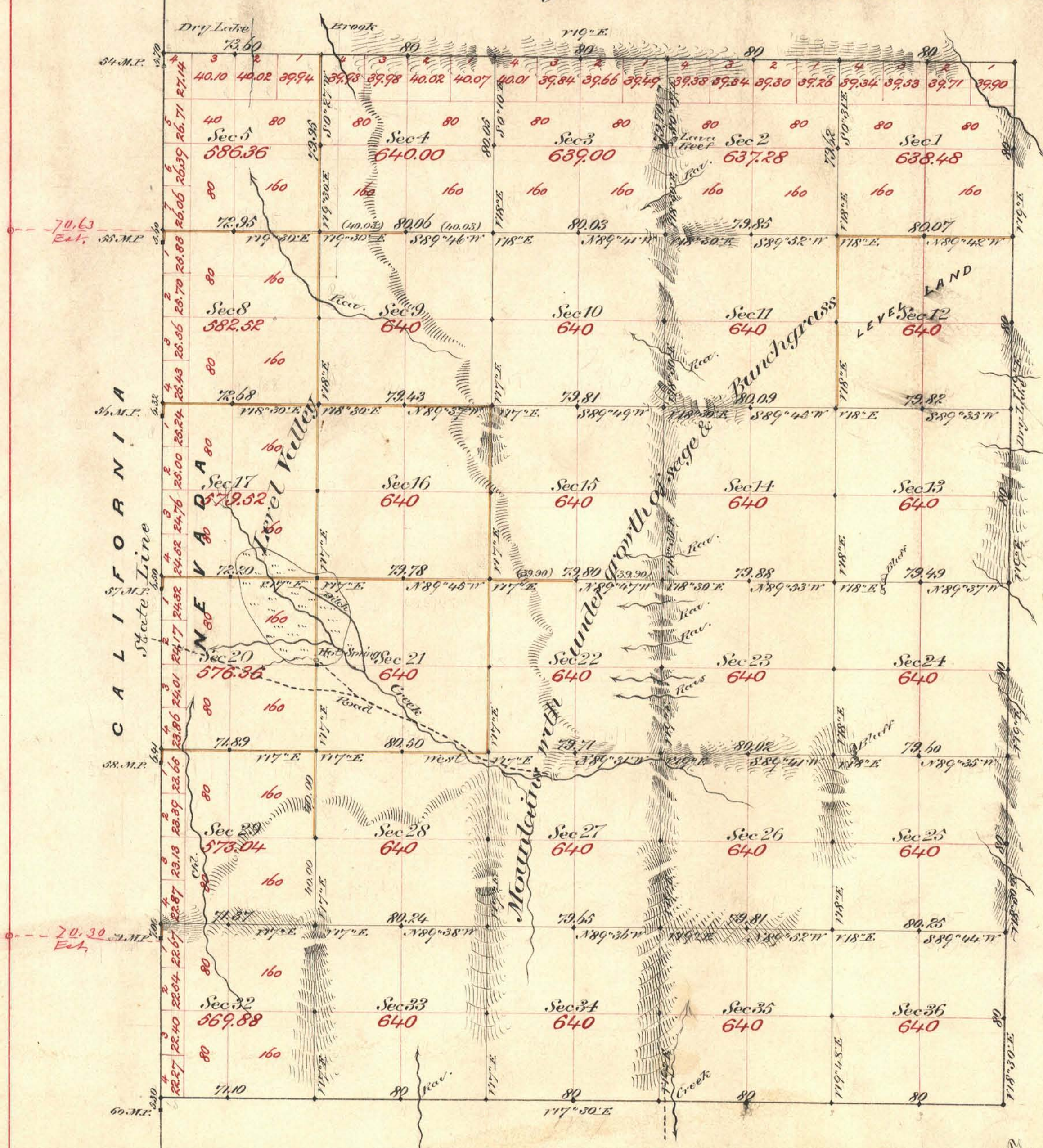


Township N° 38 North Range N° 18 East Mount Diablo Meridian



Aggregate Area of Public Land surveyed 18,822.141 Acres

Commenced October 7th 1880
Completed " 13th "

Survey designated	By whom surveyed	Date of Contact	Ant. of survey	When surveyed	T. Cont.
West boundary State Line	J. W. Von Schmidt	July 20 th 1872		1872	
South "	W. W. Garside	Dec. 16 th 1879	4- 71- 10	1880	.93
N + E. "	Palmam & Benson	Sept. 15 th 1880	10- 73- 60	"	.96
Subdivisions black & yellow ss	"	"	32- 28- 92	October	"
Connections on State Line ss	"	"	16- 09- 35	"	"
	"	"	31- 83	"	"

The above Map of Township N° 38 North of Range N° 18 East Mount Diablo Meridian is strictly conformable to the field notes of the survey thereof on file in this office which have been examined and approved
U. S. Surv. Genl. Office
Virginia City Nev.
November 20th 1880

0068

T. 38 N., R. 18 E. VD

C. S. Price
U. S. Surv. Genl. Serv.