

TOWNSHIP 37 1/2 NORTH, RANGE 43 EAST, OF THE MOUNT DIABLO MERIDIAN, NEVADA

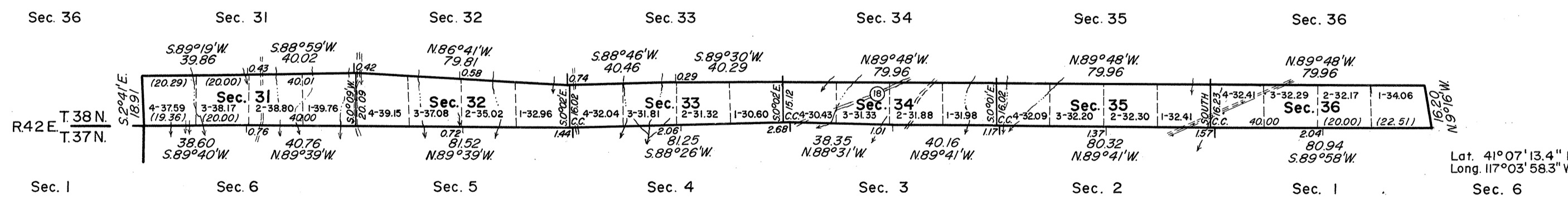
History of the earlier surveys is contained in the field notes.

Dependent resurvey of the north and west boundaries was executed concurrently under T. 38 N., R. 43 E., and the south boundary under T. 37 N., R. 43 E.

This plat represents the survey of the east boundary and subdivisional lines, executed by Lancel E. Bland, Cadastral Surveyor, November 7, 1963, to November 12, 1963, under Special Instructions dated March 19, 1963, and Supplemental Special Instructions dated November 7, 1963, for Group No. 411, Nevada.



Magnetic Declination
 173/4° E.



UNITED STATES DEPARTMENT OF THE INTERIOR
 BUREAU OF LAND MANAGEMENT
 Washington, D. C. May 12, 1966

This plat is strictly conformable to the approved field notes, and the survey, having been correctly executed in accordance with the requirements of law and the regulations of this Bureau, is hereby accepted.

For the Director

R. E. Brown

Acting Chief, Division of Engineering

Lat. 41°07'13.4" N.
 Long. 117°03'58.3" W.

137 1/2 N 43 E