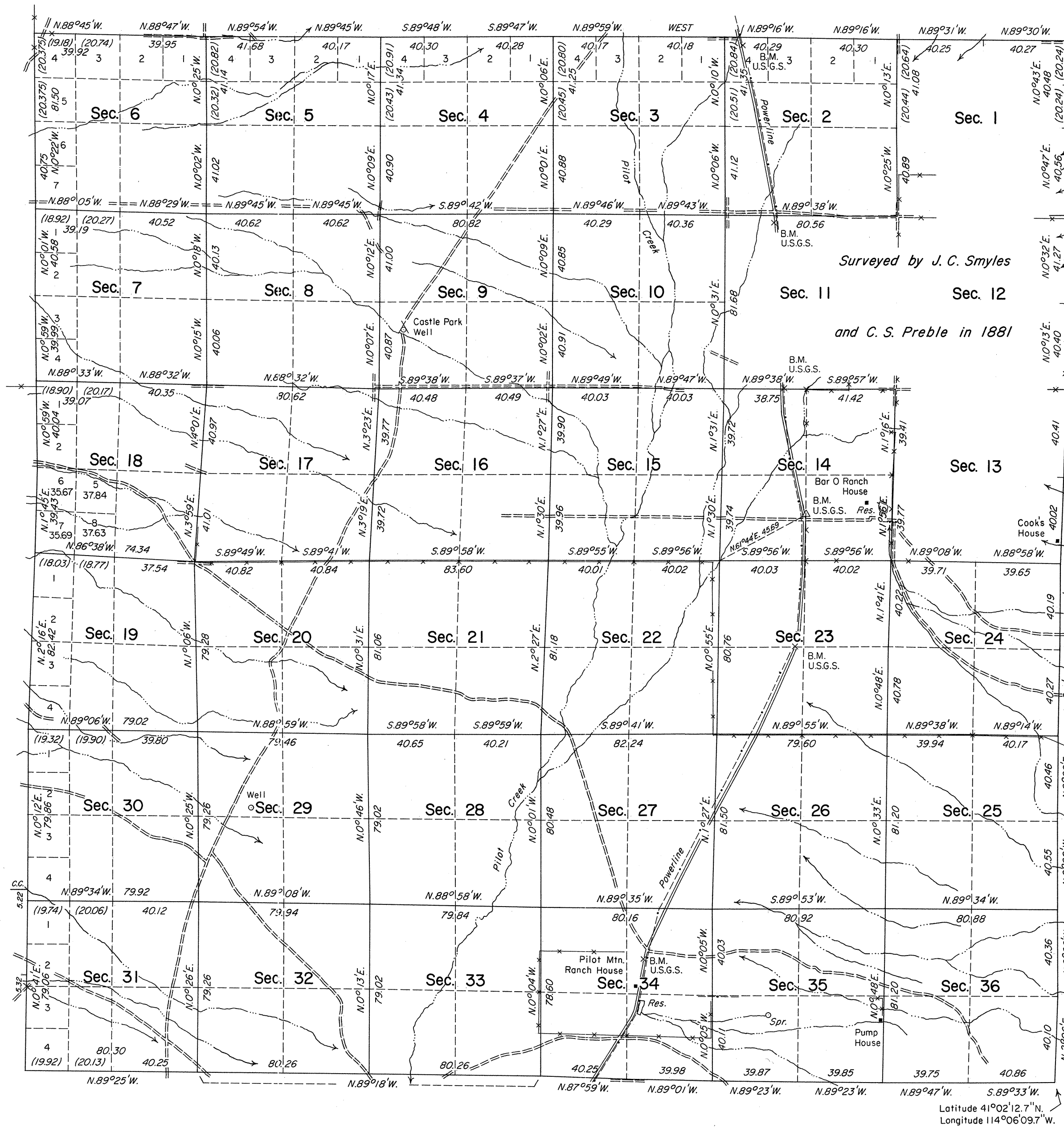


TOWNSHIP 37 NORTH, RANGE 69 EAST, OF THE MOUNT DIABLO MERIDIAN, NEVADA
DEPENDENT RESURVEY

OFFICIALLY FILED
NEVADA STATE OFFICE
10:00 A.M. JULY 15, 1985



Surveyed by J. C. Smyles
and C. S. Preble in 1881

History of the earlier surveys is contained in the field notes.

This plat represents a dependent resurvey of the south, east, west and north boundaries and a portion of the subdivisional lines of T. 37 N., R. 69 E., designed to restore the corners in their true original locations according to the best available evidence.

Except as shown hereon, the lottings and areas are as shown on the plat approved July 16, 1881.

Survey executed by Stephen R. Lambeth, Cadastral Surveyor, beginning May 29, 1984 and completed July 5, 1984, under Special Instructions dated March 28, 1984, for Group No. 611, Nevada.

UNITED STATES DEPARTMENT OF THE INTERIOR
BUREAU OF LAND MANAGEMENT

Reno, Nevada

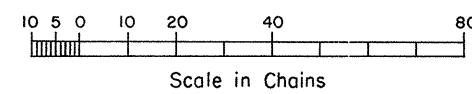
June 28, 1985

This plat is strictly conformable to the approved field notes, and the survey, having been correctly executed in accordance with the requirements of law and the regulations of this Bureau, is hereby accepted.

For the Director

Lucile E. Bland

Chief Cadastral Surveyor



Latitude 41°02'12.7"N.
Longitude 114°06'09.7"W.

Mean Magnetic Declination
17°E.