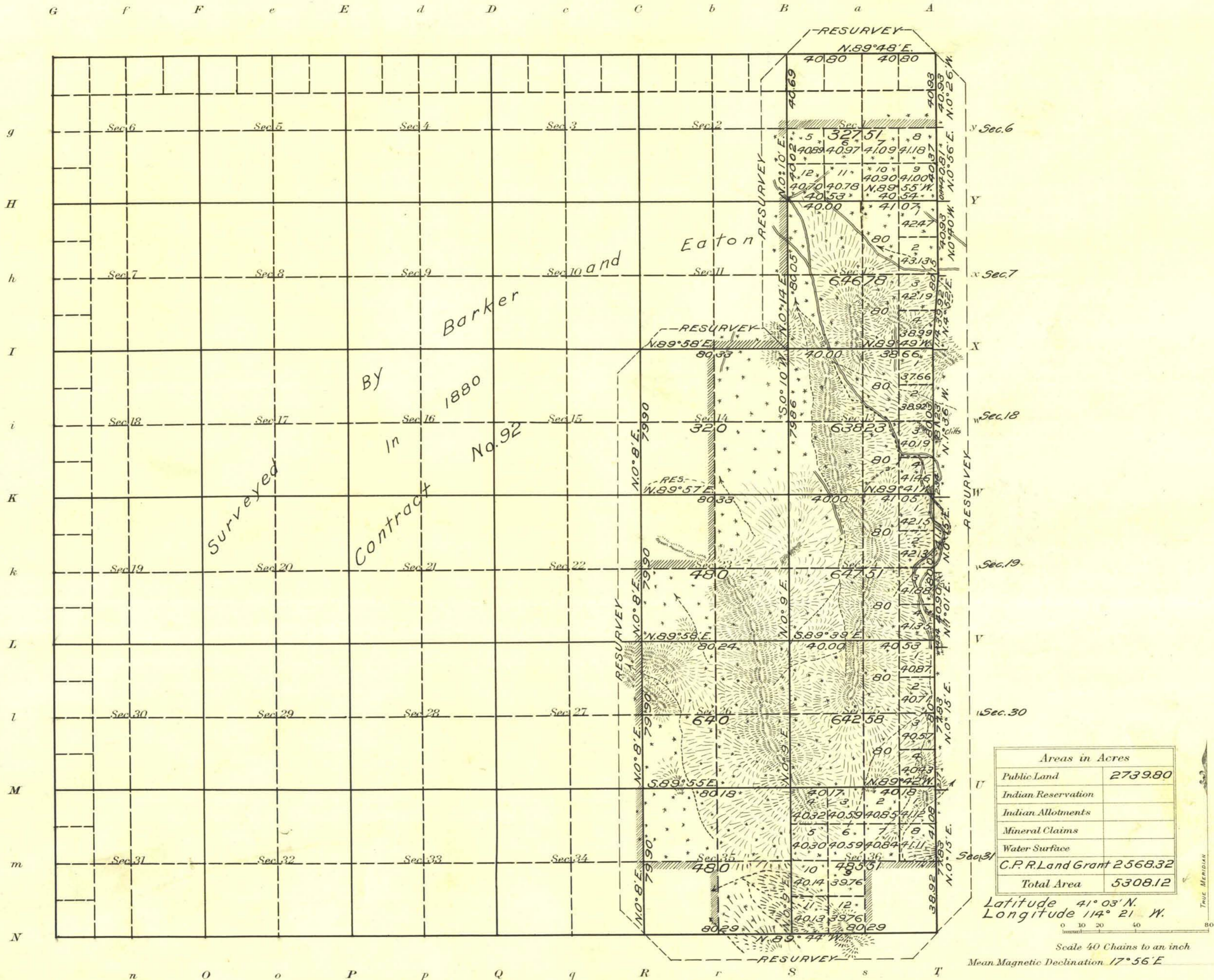


Township N<sup>o</sup> 37 North Range N<sup>o</sup> 67 East Mt. Diablo Meridian, Nevada



Surveys Designated	By Whom Surveyed	Group No. Date of Instructions	Amount of Surveys			When Surveyed	
			Mls.	chs.	lks.	Begun	Completed
N. and E. Bdy. Resurvey	Newton E. Potter	26 Mar. 23, 1914	7	3	9	Sept. 30, 1914	Oct. 6, 1914
Subdivision Resurvey	" " "	" " "	7	40	85	Oct. 2, 1914	Oct. 5, 1914
Subdivision	" " "	" " "	11	42	11	Oct. 10, 1914	Oct. 13, 1914
S. Bdy Res.	" " "	" " "	1	0	58	Sept. 9, 1914	Sept. 29, 1914

The above map of Township No. 37 North Range No. 67 East of the Mt. Diablo Meridian Nevada is strictly conformable to the field notes of the survey thereof on file in this office, which have been examined and approved

U. S. Surveyor General's Office.  
Reno, Nevada, August 17, 1916

*John B. Sullivan*  
Surveyor General.